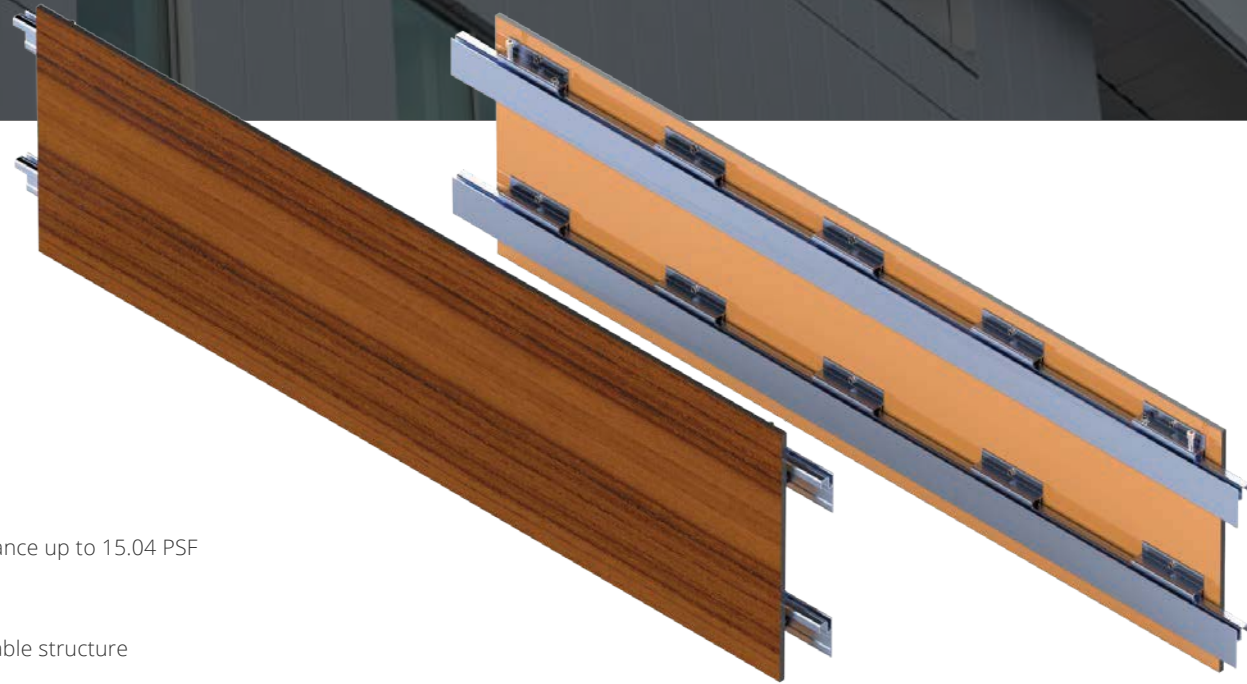


CF

The CF Series Concealed Fastener



Phenolic panel system with factory or field cut edges, utilizing continuous horizontally oriented structural extruded aluminum rail, panel mounted clips and formed closures, with a minimum system depth of 2" plus the thickness of desired panels.

Dry joint, rainscreen, wall panels

Available for phenolic material

½" joints horizontally and vertically

Tested to meet AAMA 501 requirements with uncontrolled water infiltration resistance up to 15.04 PSF

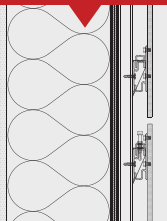
Structural load tested, per ASTM E 330 - 2, with a negative load of 50.13 psf

System can be mounted on any waterproofed substrate with attachment to a suitable structure

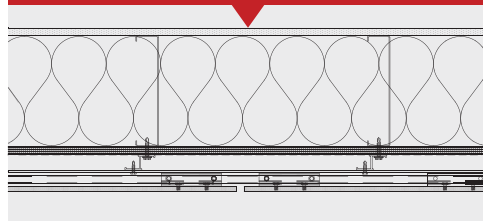
Standard system details for installation with building insulation either to the exterior of sheathing or within the stud cavity, available in either AutoCAD or PDF formats

Panels machined using a CNC gantry router

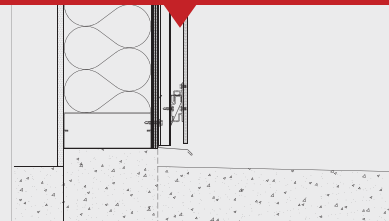
Horizontal Joint



Vertical Joint



Base of Wall



Parapet Coping

