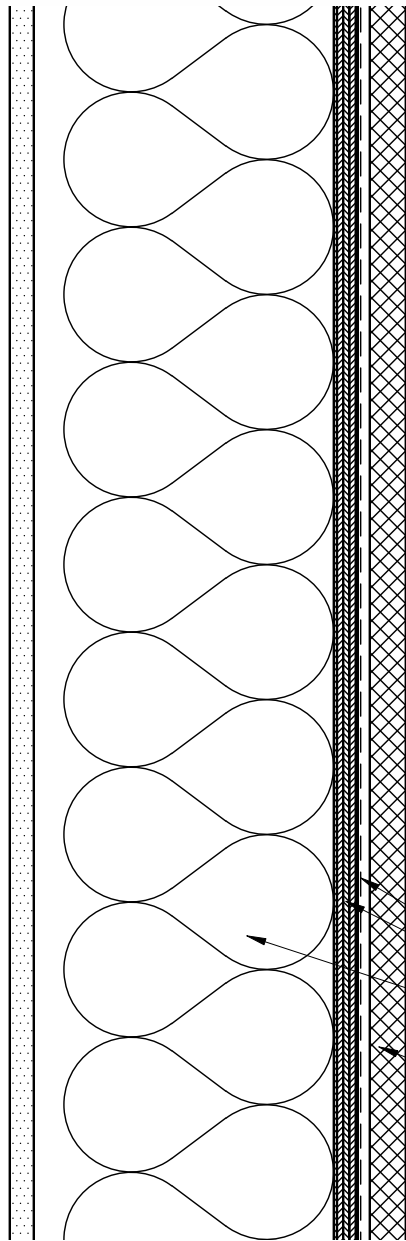


Project Specific
Insulation Thickness

1" Air Gap

1"



NorthClad CF Panel, Material as Specified

0.032" Black Finished Aluminum Cover (Pt.# CFB01), Provided in 2" Lengths, Attached with Pre-adhered Structural Tape, Placement at Each Vertical Joint, on Each CFR (See B/DET for Further Information)

CFF1 Fasteners, Used with Phenolic Panel Material, 2-3 per Clip, Depending upon Engineering.

CFCS Standard Panel Attachment Clip, Provided in 4" Lengths, Spaced per Engineering Requirements.

Panel Dimension

1/2"

Adjustment Bolt (Pt.# CFF3) & Hold Down Fastener (Pt.# CFF2), Required at CFCA Panel Clips. See B/DET for Further Information.

CFCA Adjustable Panel Attachment Clip, Provided in 4" Lengths, Required at Upper Right and Upper Left Corners of Panels. See B/DET for Further Information.

Panel Dimension

#14 Screws at Framing or per Engineering

Framing, Sheathing and WRB not by NorthClad

Code Compliant Insulation and/or Standoff, as Applicable, not by NorthClad

A Section - Horizontal Joint
DET With Insulation Outboard of Stud Cavity



11831 BEVERLY PARK RD. BUILDING C, EVERETT, WA 98204
* PHONE: 425.740.3702 * FAX: 425.485.3503 *
www.northclad.com

This document is property of NorthClad and should not be used, duplicated or modified without the express written consent. Copyright © 2010 NorthClad All Rights Reserved

NO.	DESCRIPTION	DATE	INIT.
1	Design	11/23/2016	M.E.
2			
3			
4			
5			
6			
7			
8			
9			
10			

Project

Concealed Fastener Standard Details

11831 Beverly Park Rd, Bldg C
Everett, WA 98204

Scale	3" = 1'-0"
Job Number	
Sheet	A-DET
APPROVED	