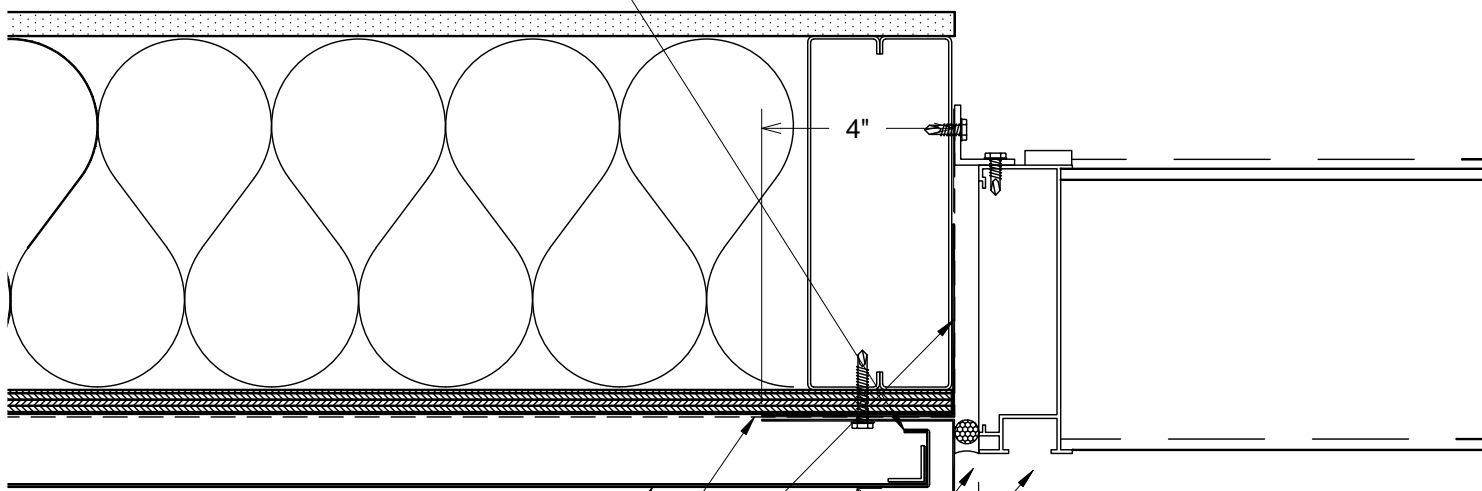


Right Termination Panel



NorthClad Zinc Panel. See B/DET for Standard Dimensions and Callouts.

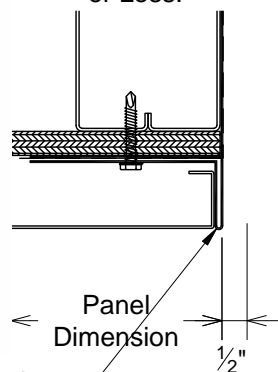
WRB Detailing not by NorthClad

(Available) Zinc Flashing (Pt.# ZNi23), Finish to Match NorthClad Panel, Attached Through Oversized Holes with Fasteners, Sized and Spaced per Engineering

(Available) Zinc Flashing (Pt.# ZNi24), Finish to Match NorthClad Panel, Attached Through Oversized Holes with Fasteners, Sized and Spaced per Engineering

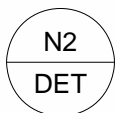
Louver System, Integral Flashings, and Sealant by NorthClad

Alternate Detail for Panels with Heights 24" or Less.



Panel Dimension

(Available) Zinc Flashing (Pt.# ZNi24M), Finish to Match NorthClad Panel, Attached Through Oversized Holes with Fasteners, Sized and Spaced per Engineering



Plan - Louver at Left Jamb



11831 BEVERLY PARK RD. BUILDING C, EVERETT, WA 98204  
 \* PHONE: 425.740.3702 \* FAX: 425.485.3503 \*  
 www.northclad.com

This document is property of NorthClad and should not be used, duplicated or modified without the express written consent. Copyright © 2010 NorthClad All Rights Reserved

NO.	DESCRIPTION	DATE	INIT.
1	Design	05/27/2015	M E
2			
3			
4			
5			
6			
7			
8			
9			
10			

Project

# NorthClad Zinc Interlocking Standard Details

11831 Beverly Park Rd, Bldg C  
 Everett, WA 98204

Scale 3" = 1'-0"

Job Number

Sheet

N2-DET

APPROVED