

CR

The CR Series Concealed Rail



Phenolic panel system with factory kerfed top and bottom edges using continuous horizontally oriented structural extruded aluminum rail and EF system extrusions at vertical terminations, with a minimum system depth of 1" plus 8mm phenolic panels.

Dry joint, rainscreen wall panels

Available for phenolic material

1/8" joints horizontally and vertically

Tested to meet AAMA 501 requirements with uncontrolled water infiltration resistance up to 15.04 psf

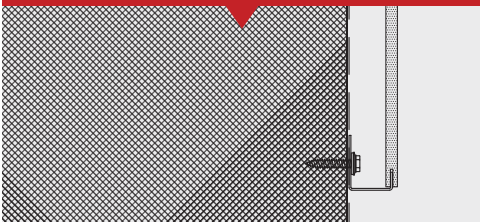
Structural load tested per ASTM E 330 - 2 with a negative load of 50.13 psf

System can be mounted on any waterproofed substrate with attachment to a suitable structure

Standard system details for installation with building insulation with to the exterior of sheathing or within the stud cavity available in either AutoCAD or PDF formats

Panels machined using a CNC Gantry Router

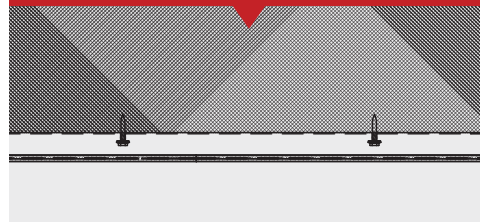
Phenolic Plank Panel at Bottom Termination



Phenolic Plank Panel at Top Termination



Phenolic Plank Panel at Vertical Joining



Phenolic Plank Panel at Corner Termination

