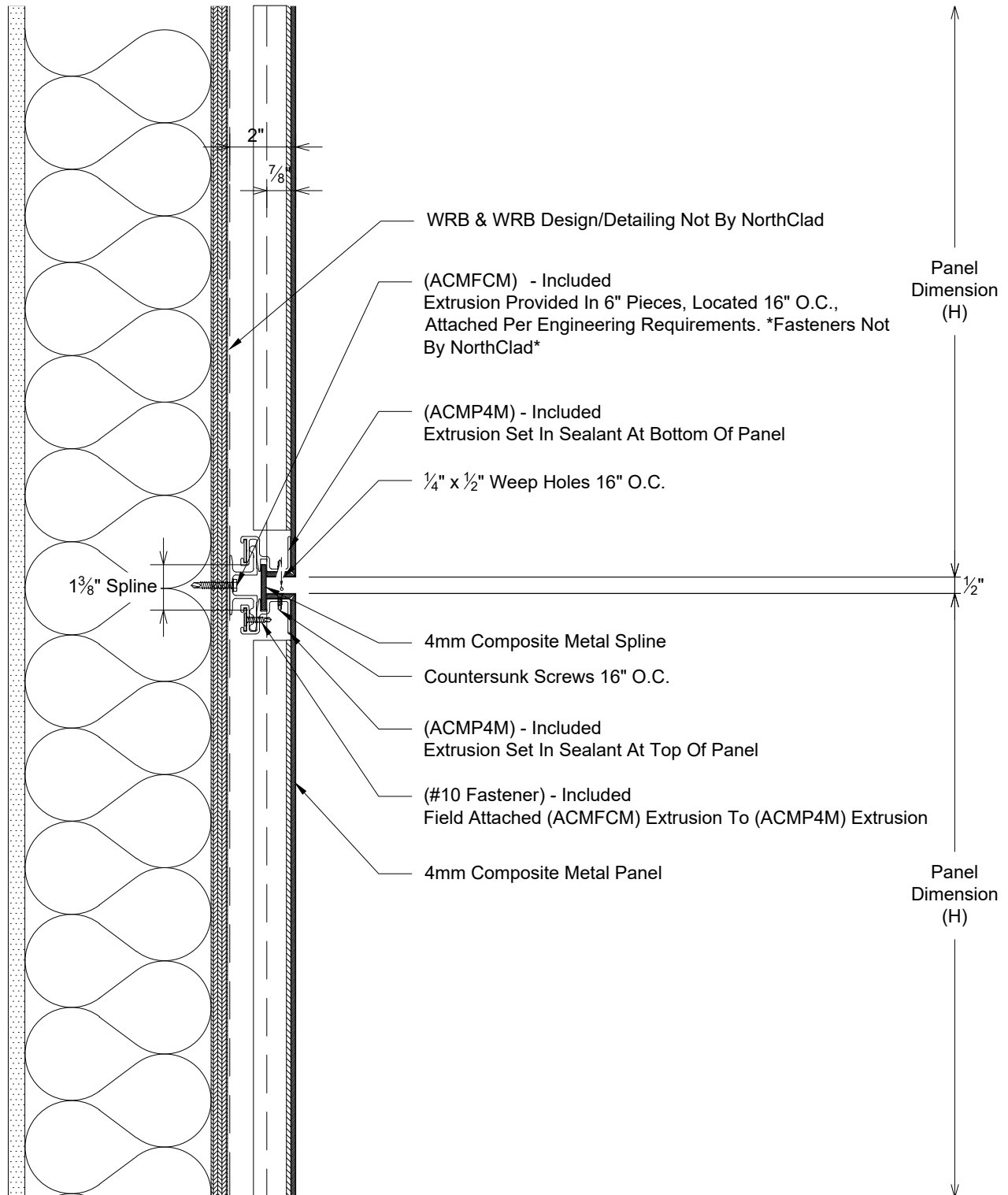


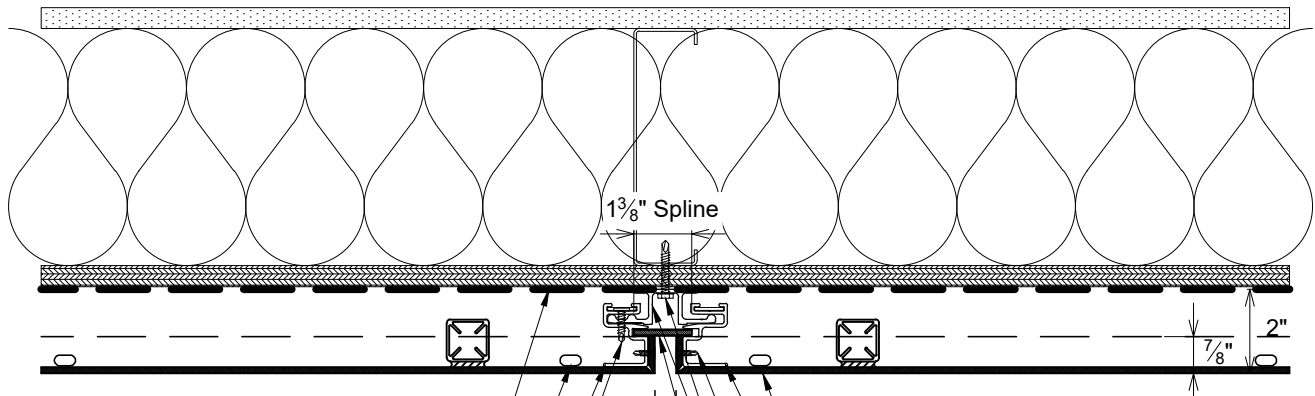
Key Elevation

System: NorthClad ACM System



A

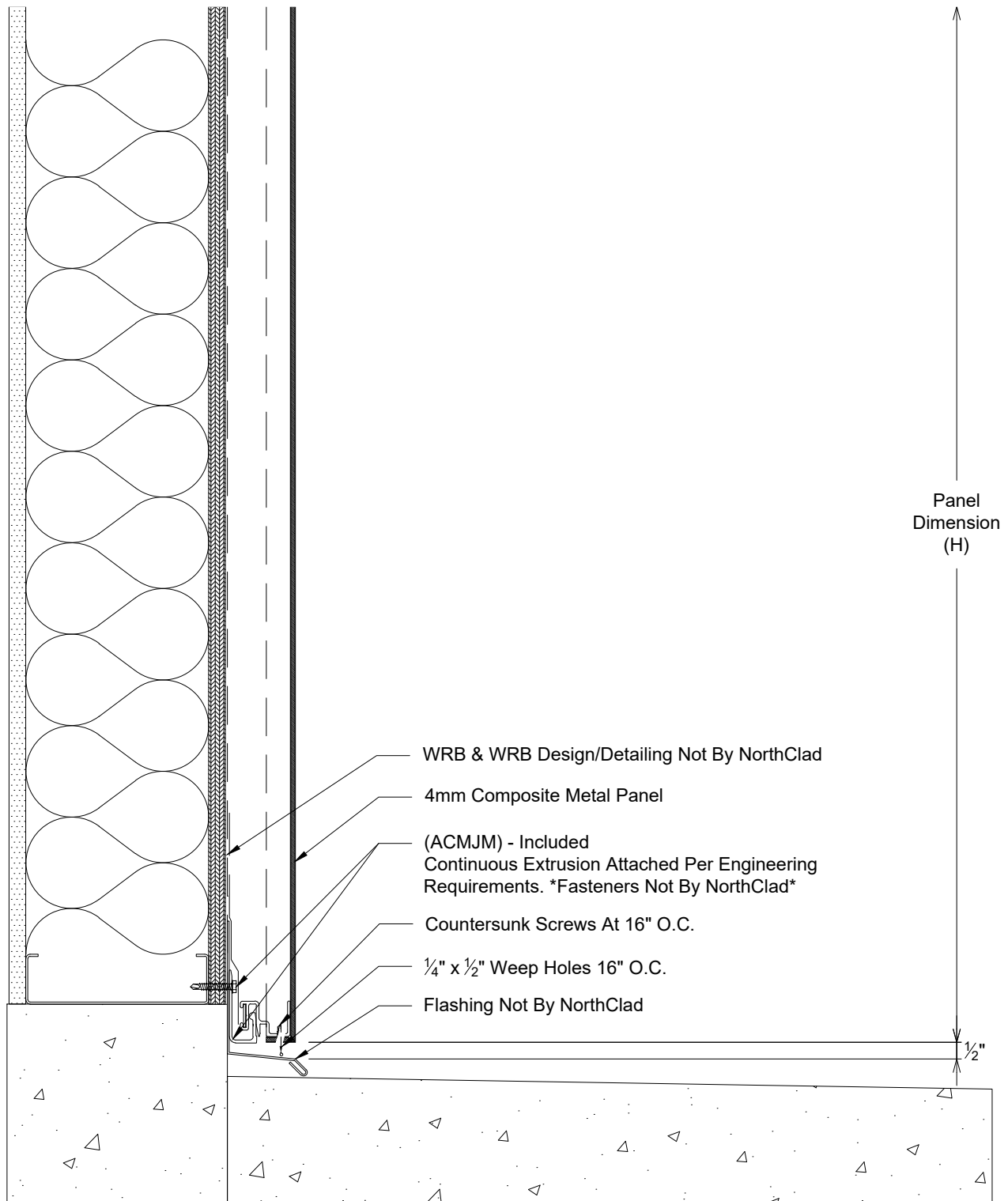
Section - Horizontal Joint  
System: NorthClad ACM System



- WRB & WRB Design/Detailing Not By NorthClad
- 1/4" x 1/2" Weep Holes 16" O.C.
- (ACMP4M) - Included Extrusion Set In Sealant At Side Of Panel
- (#10 Fastener) - Included Field Attached (ACMFCM) Extrusion To (ACMP4M) Extrusion
- Panel Dimension (W1)
- 1/2"
- Panel Dimension (W1)
- 4mm Composite Metal Panel
- (ACMP4M) - Included Extrusion Set In Sealant At Side Of Panel
- Countersunk Screws 16" O.C.
- (ACMFCM) - Included 6" Extrusion 16" O.C. Attached Per Engineering Requirements. \*Fasteners Not By NorthClad\*
- 4mm Composite Metal Spline

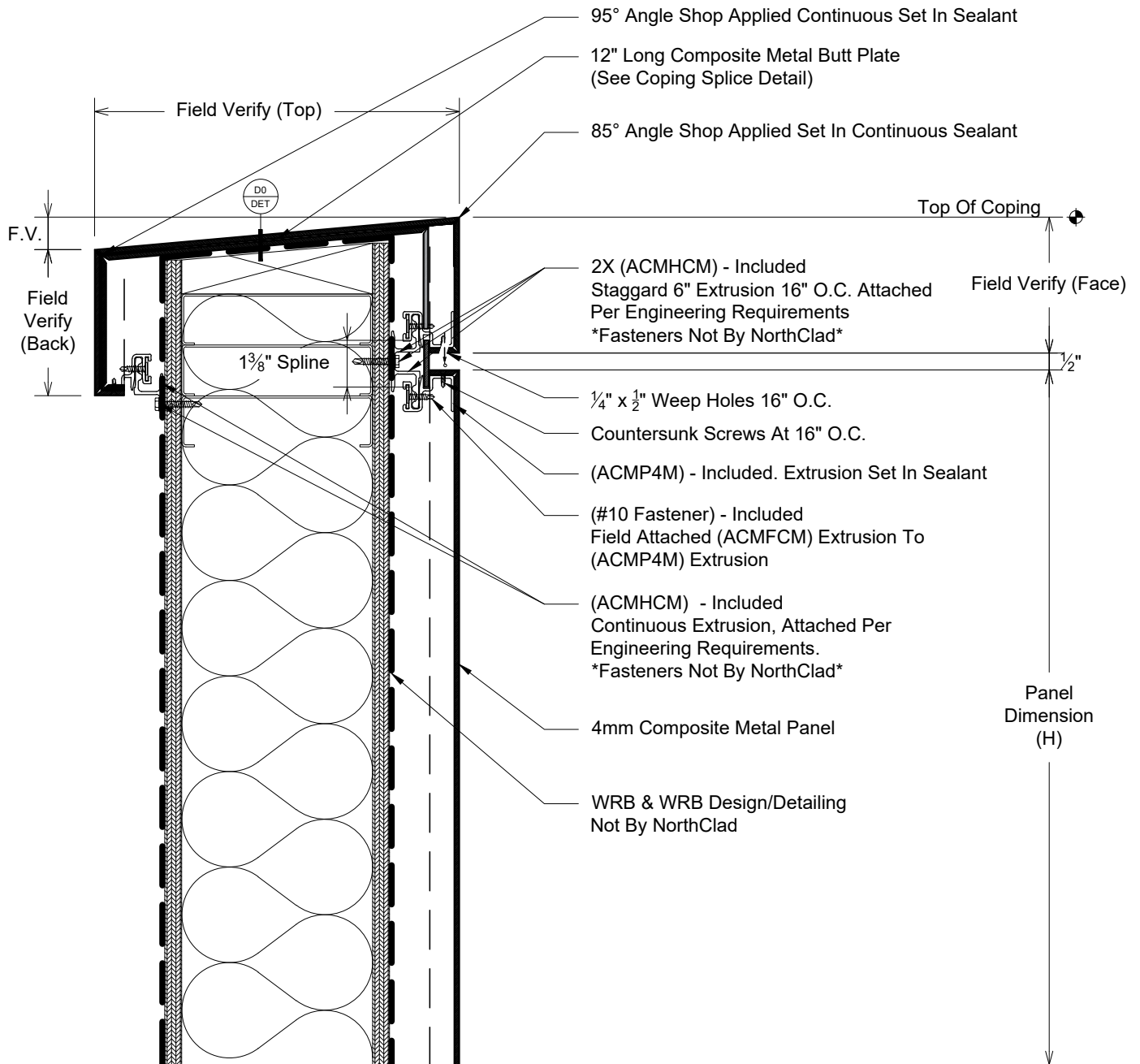
**B**

Plan - Vertical Joint  
System: NorthClad ACM System



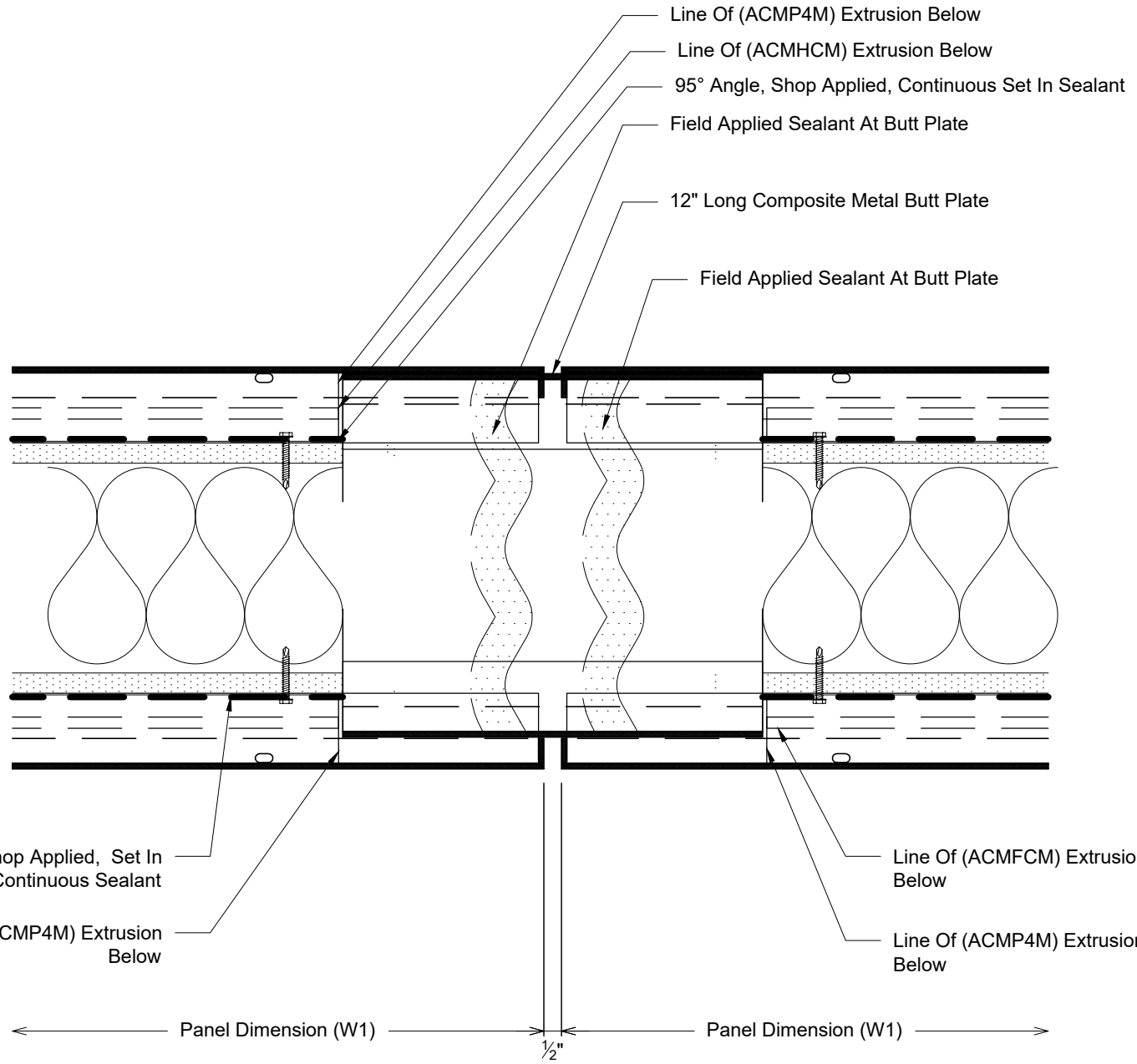
C

Section - NorthClad ACM - Base of Wall  
System: NorthClad ACM System



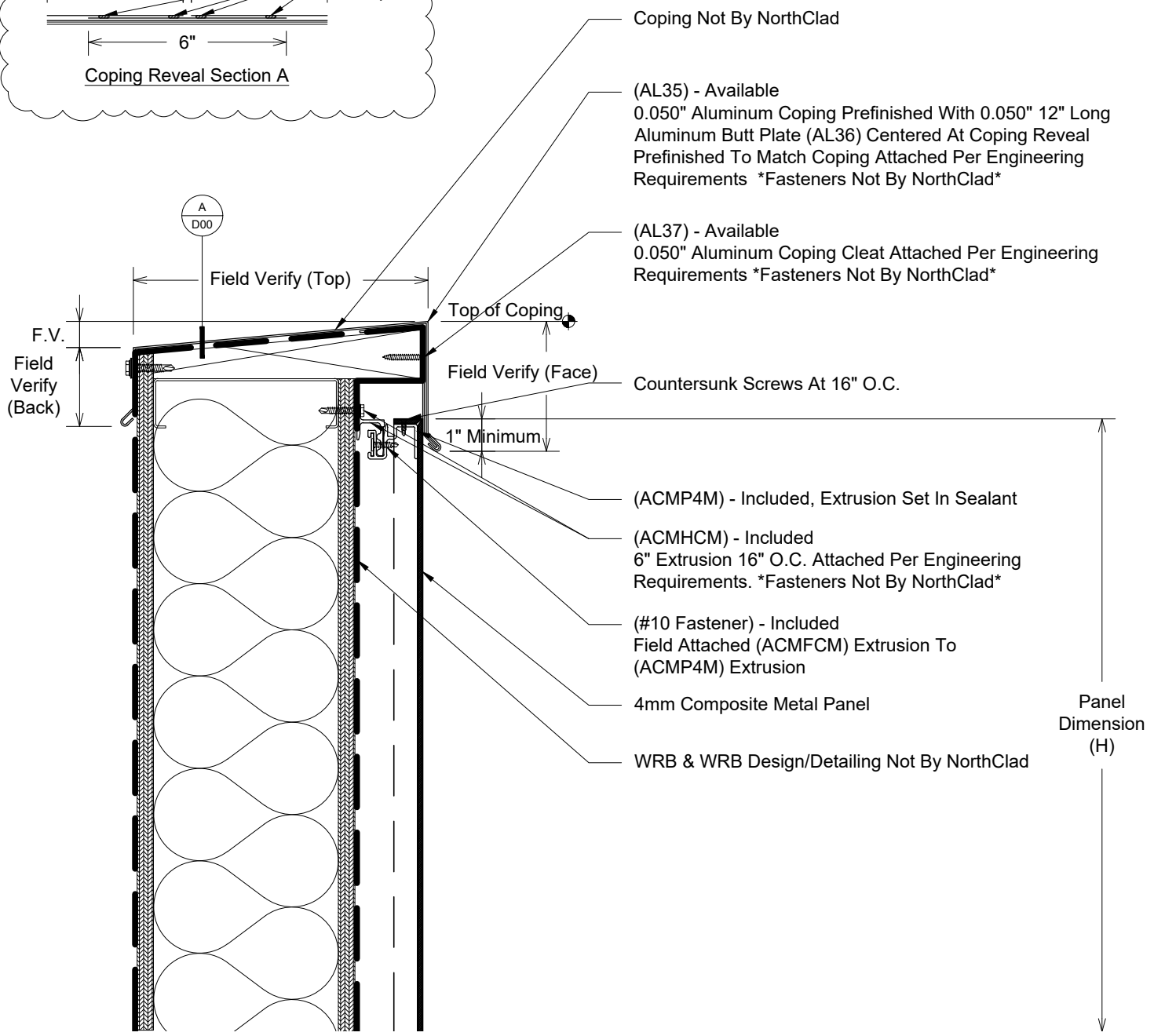
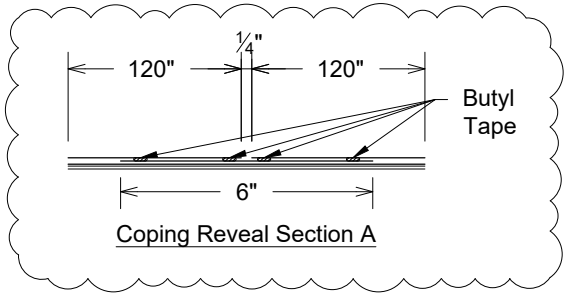
D1

Section - NorthClad ACM - Coping  
System: NorthClad ACM System



D0

Plan - NorthClad ACM - Coping Splice  
 System: NorthClad ACM System



Coping Not By NorthClad

(AL35) - Available  
 0.050" Aluminum Coping Prefinished With 0.050" 12" Long Aluminum Butt Plate (AL36) Centered At Coping Reveal Prefinished To Match Coping Attached Per Engineering Requirements \*Fasteners Not By NorthClad\*

(AL37) - Available  
 0.050" Aluminum Coping Cleat Attached Per Engineering Requirements \*Fasteners Not By NorthClad\*

Countersunk Screws At 16" O.C.

(ACMP4M) - Included, Extrusion Set In Sealant

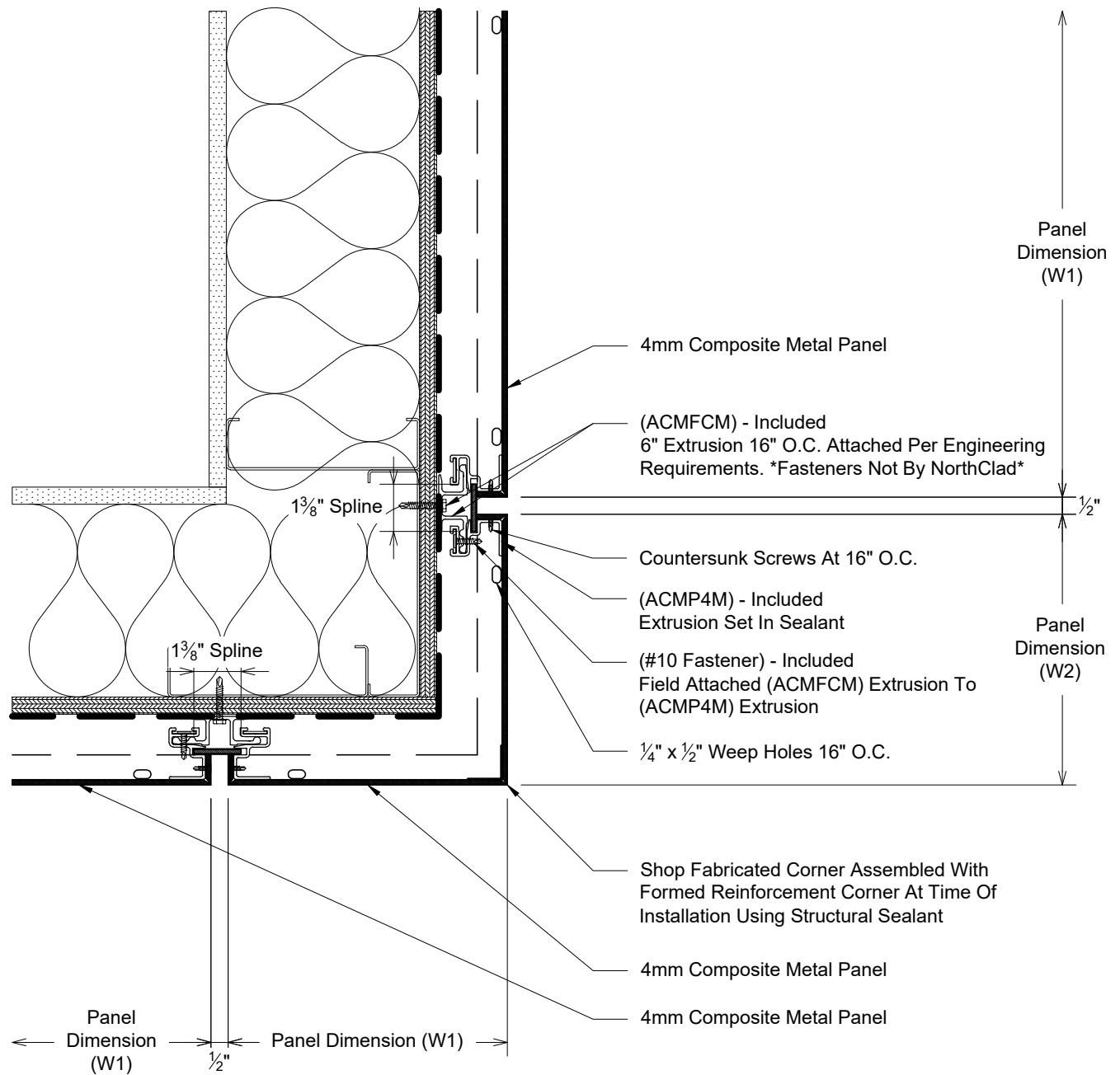
(ACMHCM) - Included  
 6" Extrusion 16" O.C. Attached Per Engineering Requirements. \*Fasteners Not By NorthClad\*

(#10 Fastener) - Included  
 Field Attached (ACMFCM) Extrusion To (ACMP4M) Extrusion

4mm Composite Metal Panel

WRB & WRB Design/Detailing Not By NorthClad

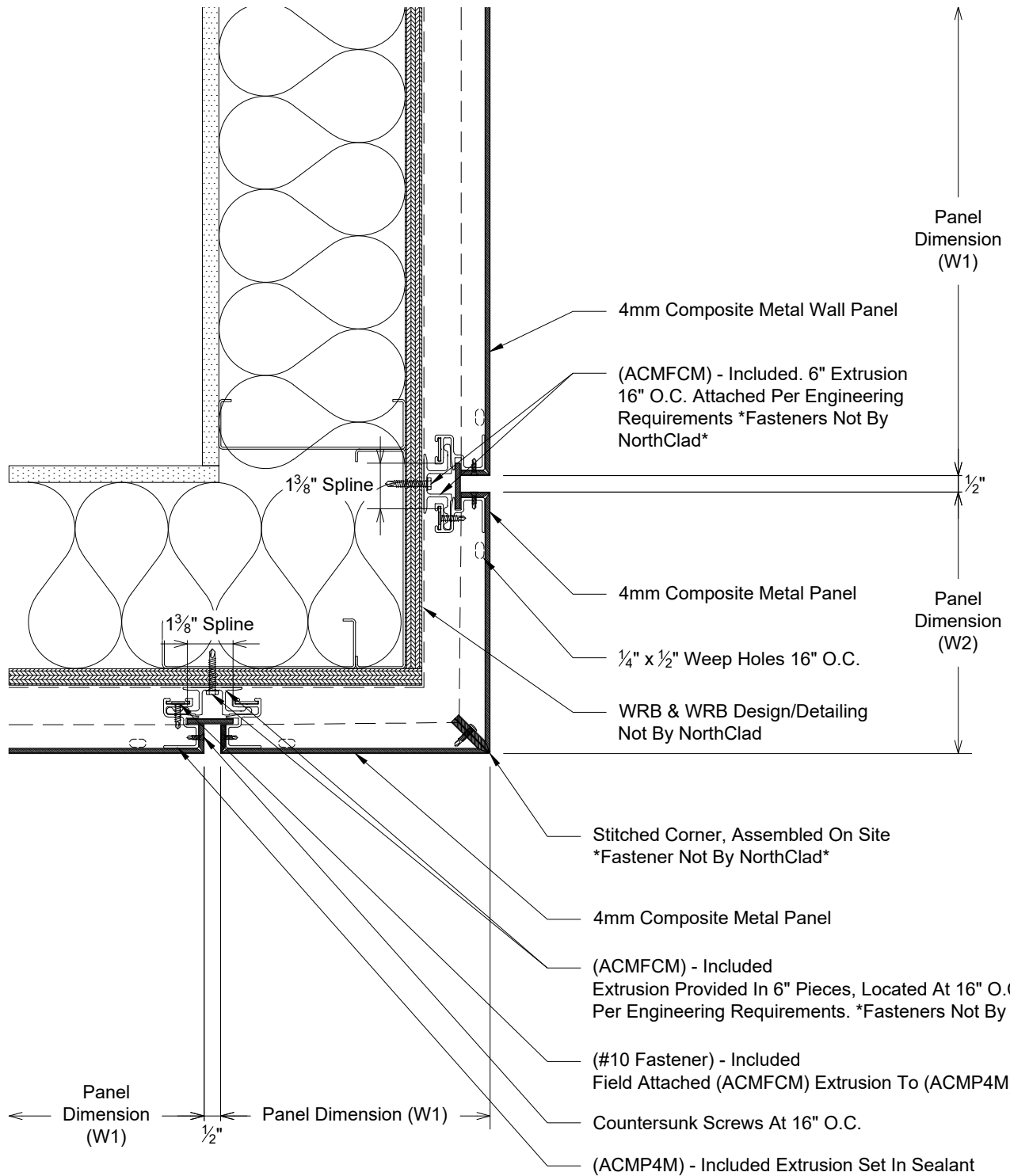
**D2** Section - NorthClad ACM - Coping  
 System: NorthClad ACM System



E1

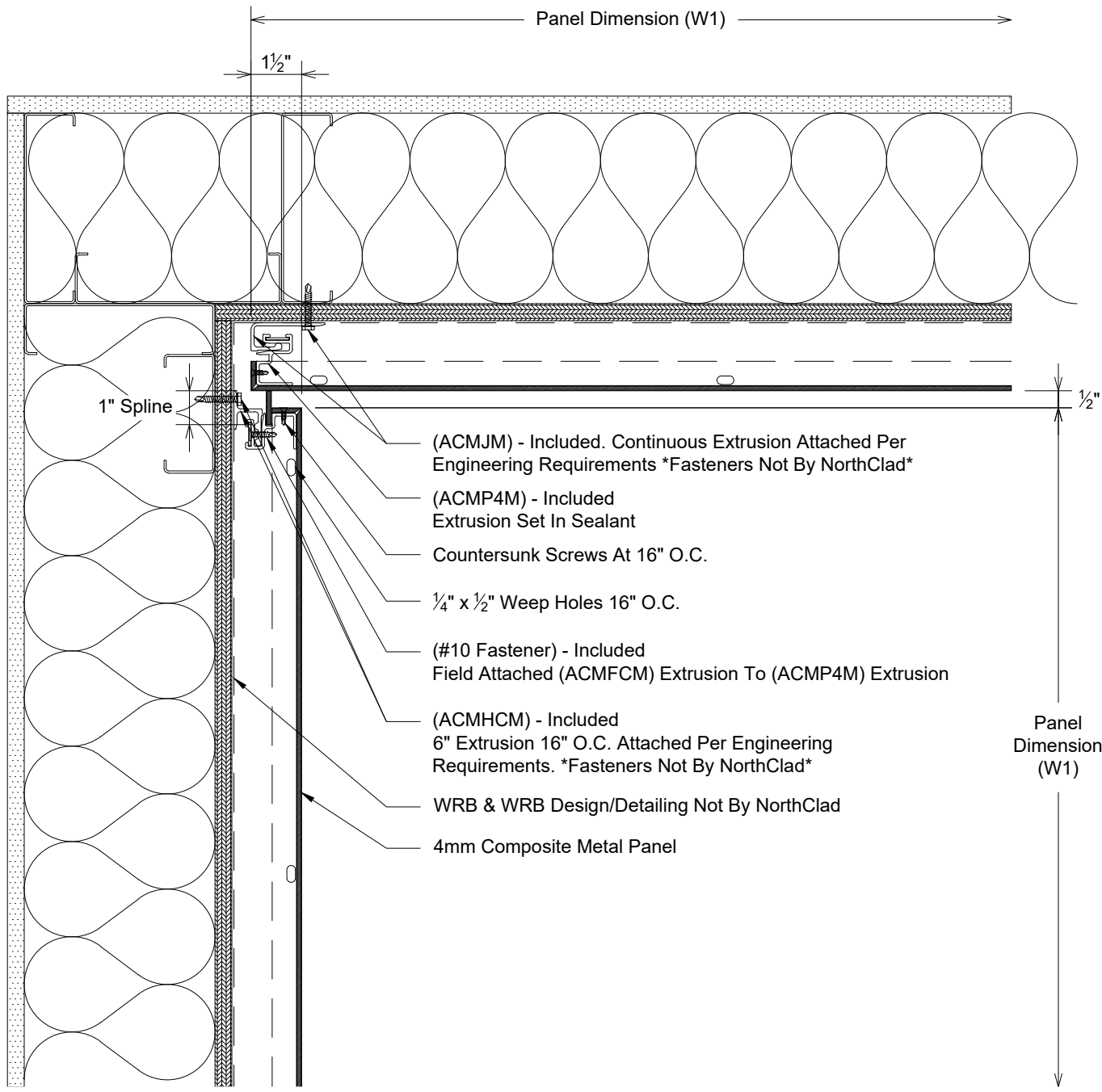
Plan - NorthClad ACM - Outside Corner  
System: NorthClad ACM System





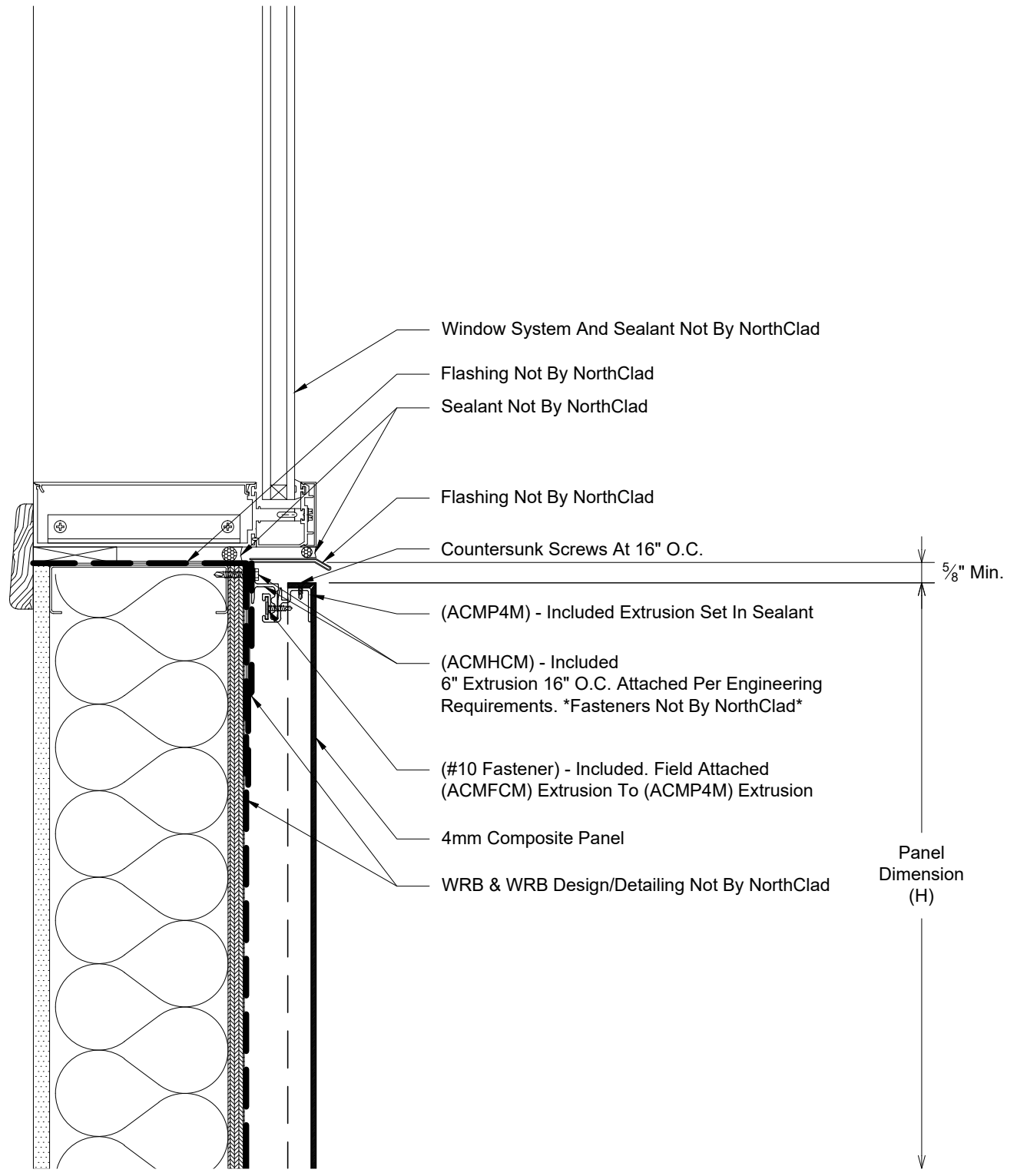
**E2**

Section - NorthClad ACM - Outside Corner Stitched  
System: NorthClad ACM System



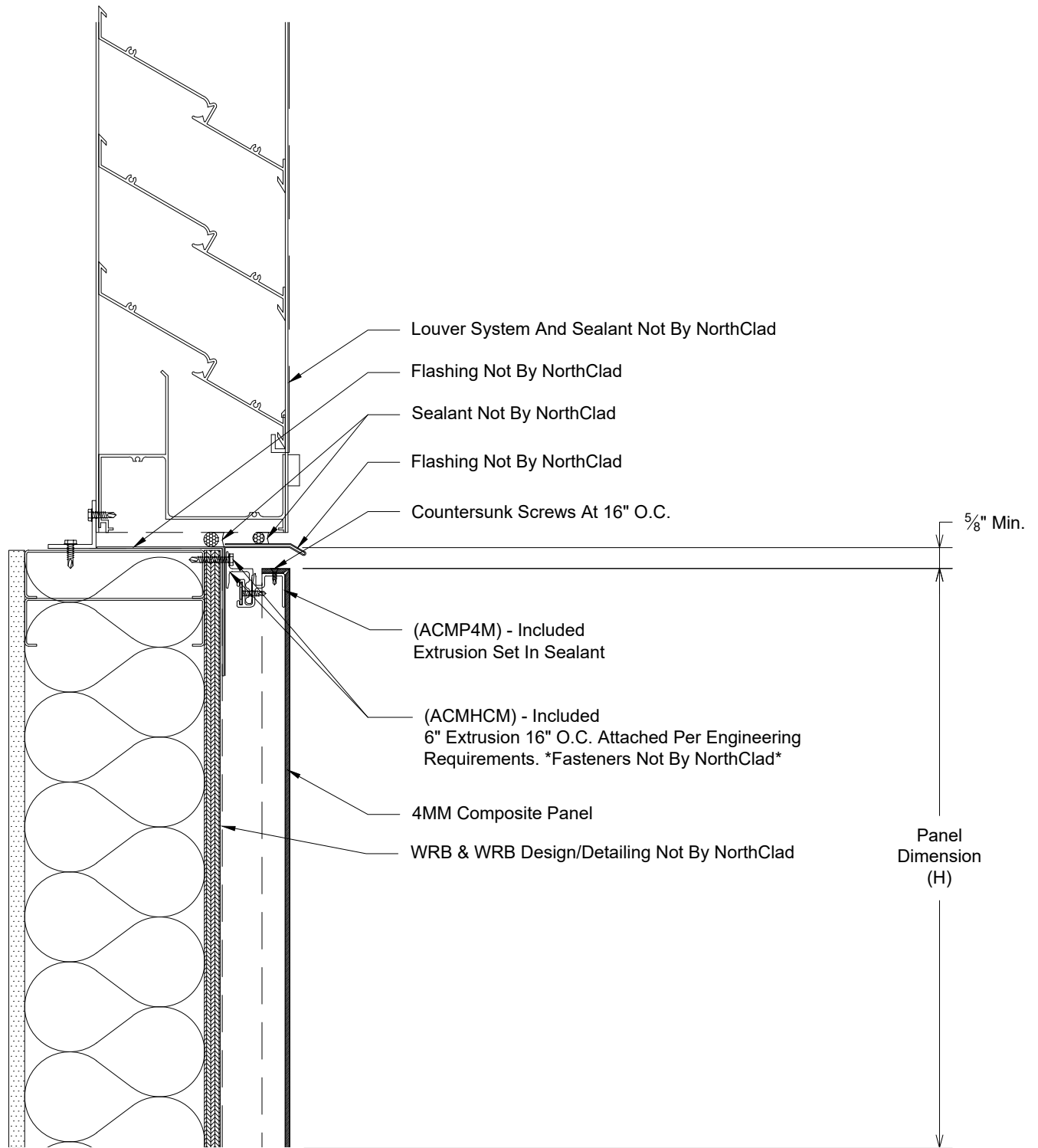
F

Plan - NorthClad ACM - Inside Corner  
System: NorthClad ACM System



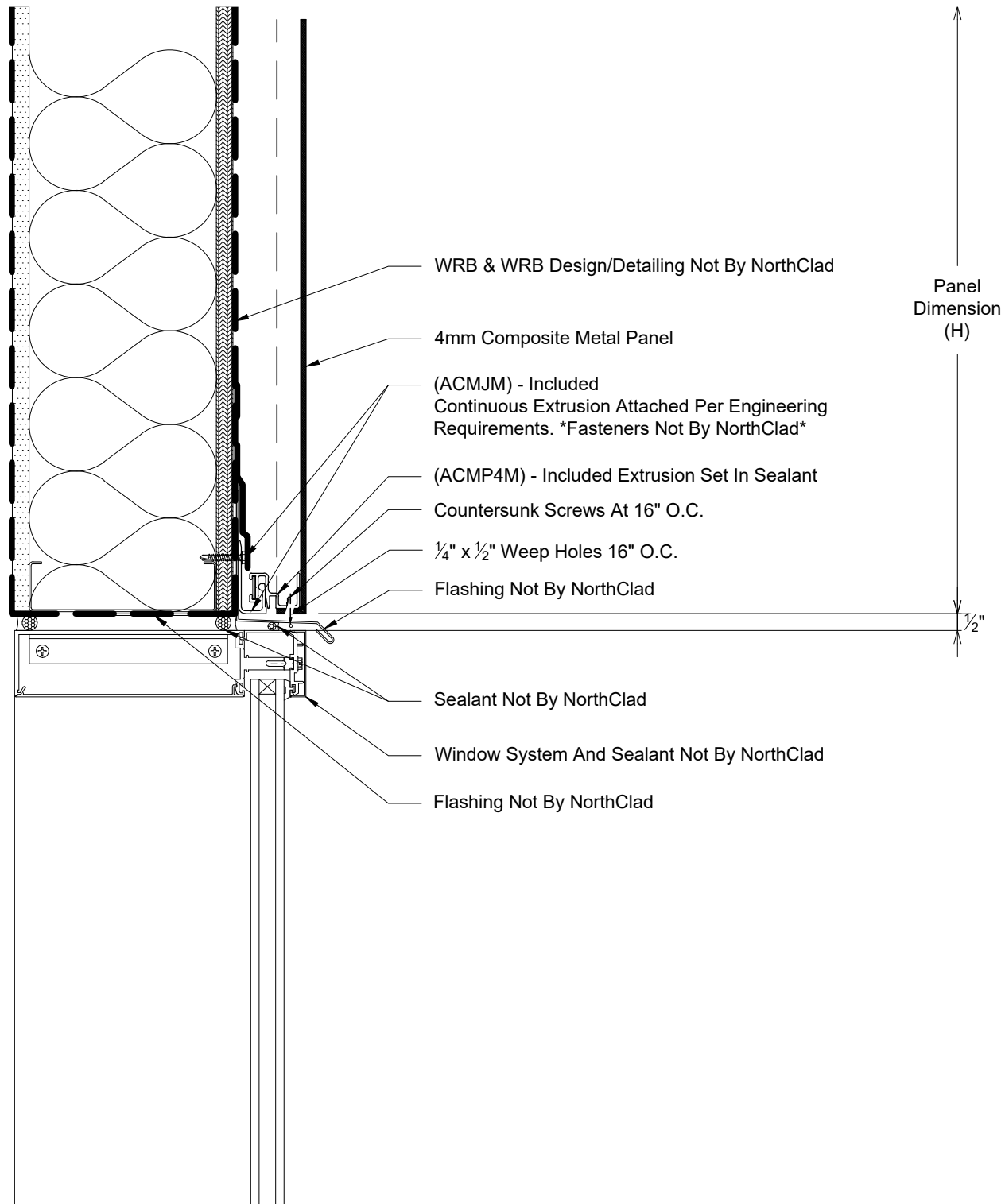
G1

Section - NorthClad ACM - Framed Opening Window Sill  
System: NorthClad ACM System



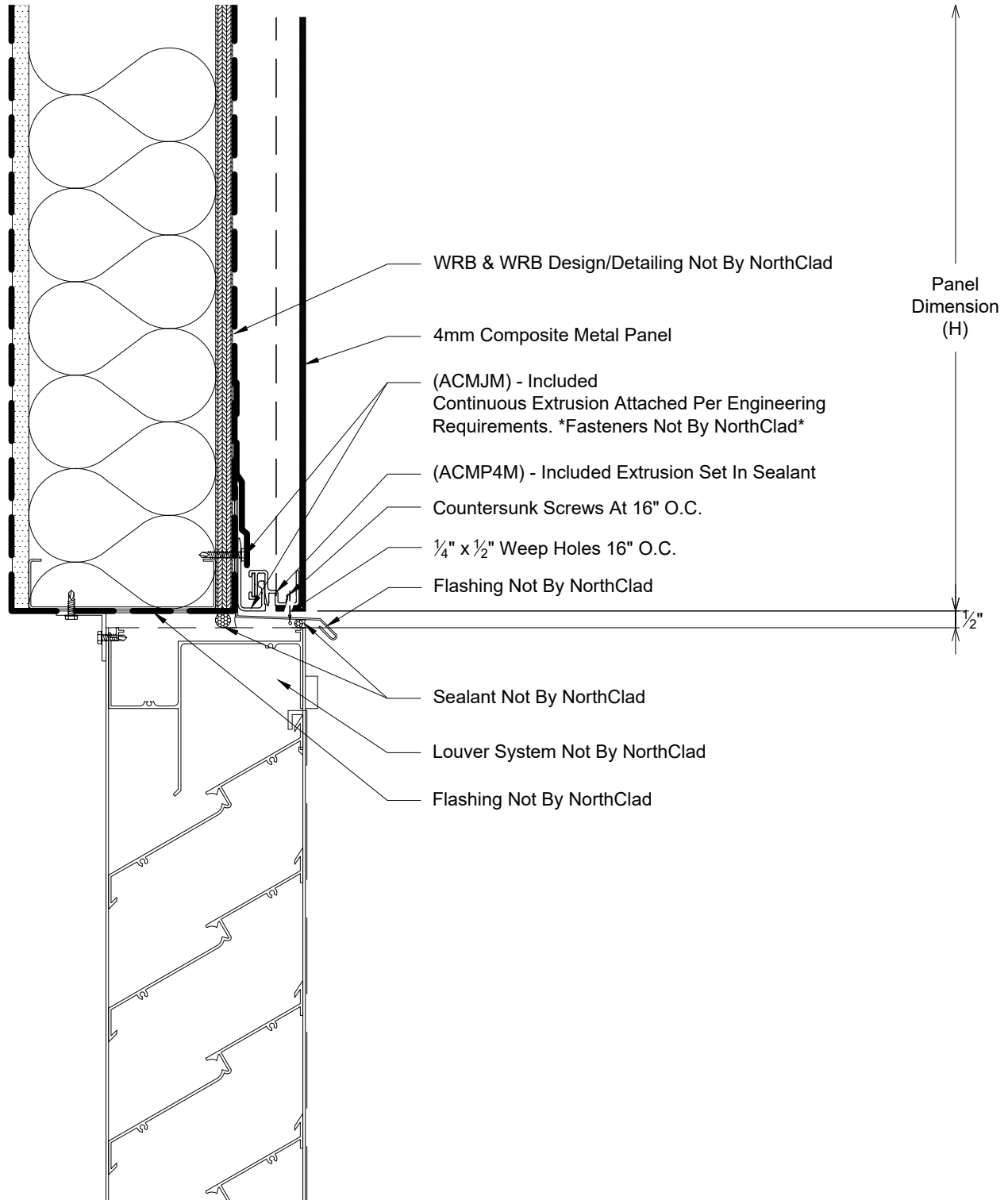
G2

Section - NorthClad ACM - Framed Opening Louver Sill  
 System: NorthClad ACM System



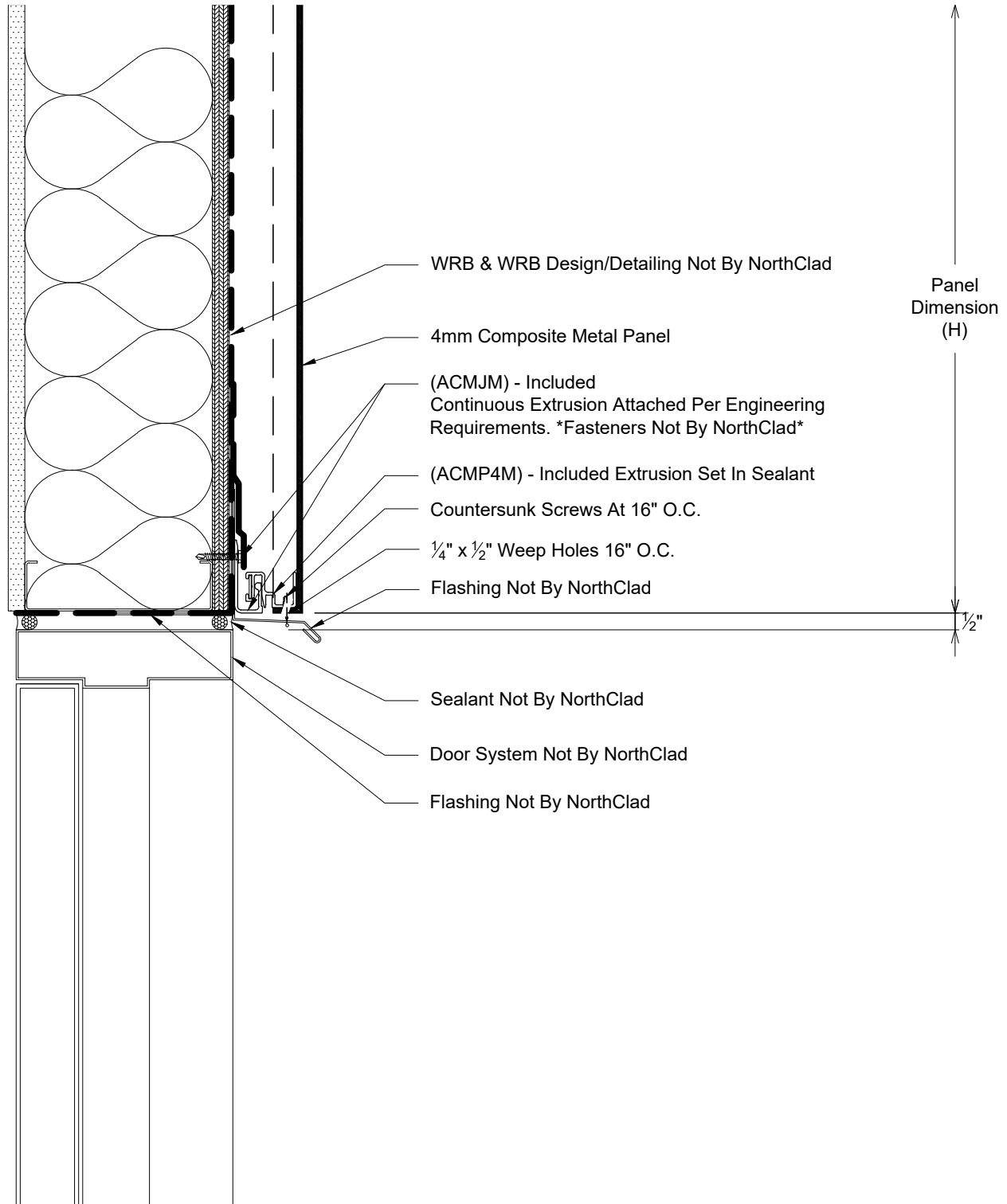
H1

Section - NorthClad ACM - Framed Opening Window Header  
System: NorthClad ACM System



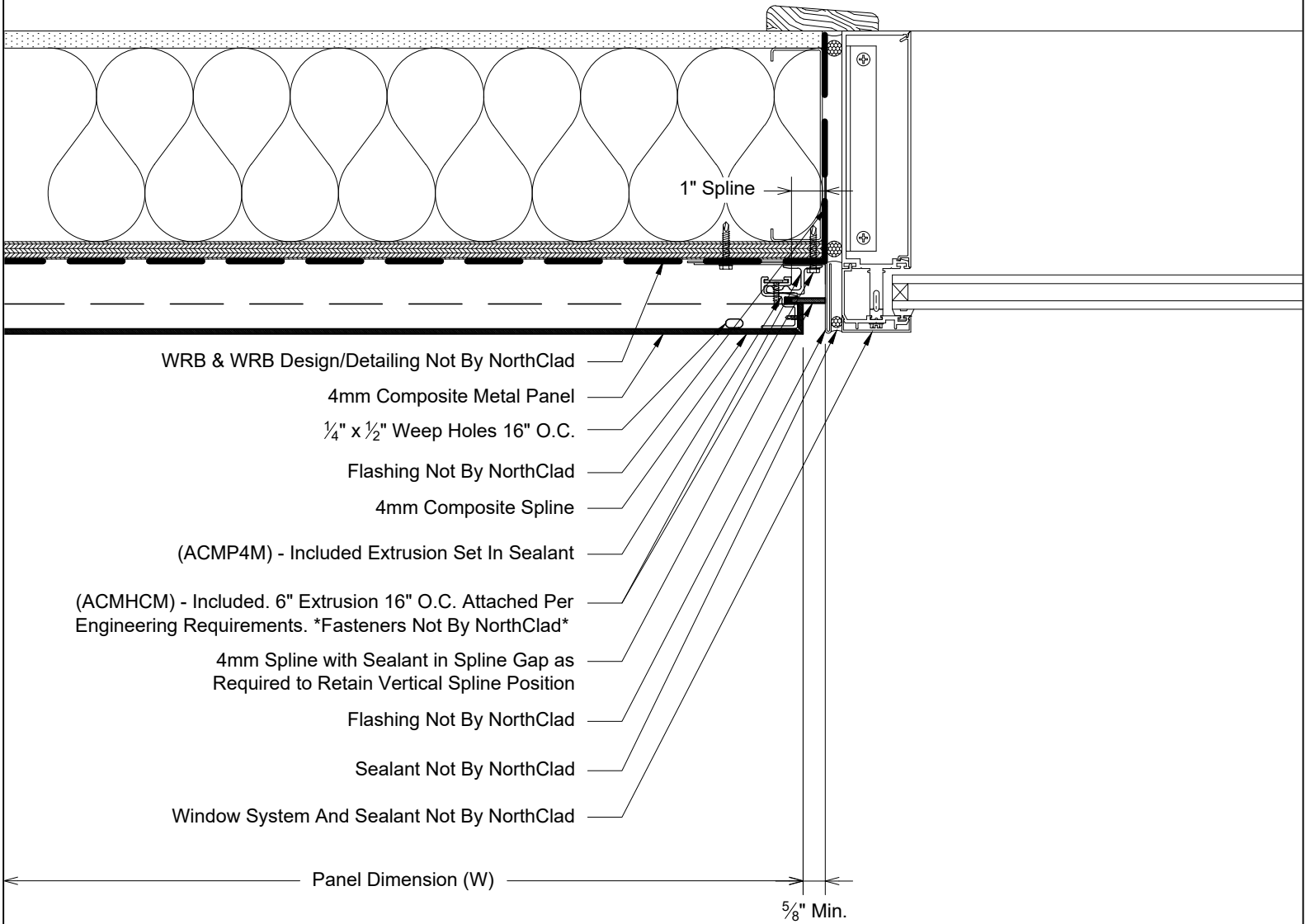
H2

Section - NorthClad ACM - Framed Opening Louver Header  
 System: NorthClad ACM System



H3

Section - NorthClad ACM - Framed Opening Door Header  
 System: NorthClad ACM System



- WRB & WRB Design/Detailing Not By NorthClad
- 4mm Composite Metal Panel
- 1/4" x 1/2" Weep Holes 16" O.C.
- Flashing Not By NorthClad
- 4mm Composite Spline
- (ACMP4M) - Included Extrusion Set In Sealant
- (ACMHCM) - Included. 6" Extrusion 16" O.C. Attached Per Engineering Requirements. \*Fasteners Not By NorthClad\*
- 4mm Spline with Sealant in Spline Gap as Required to Retain Vertical Spline Position
- Flashing Not By NorthClad
- Sealant Not By NorthClad
- Window System And Sealant Not By NorthClad

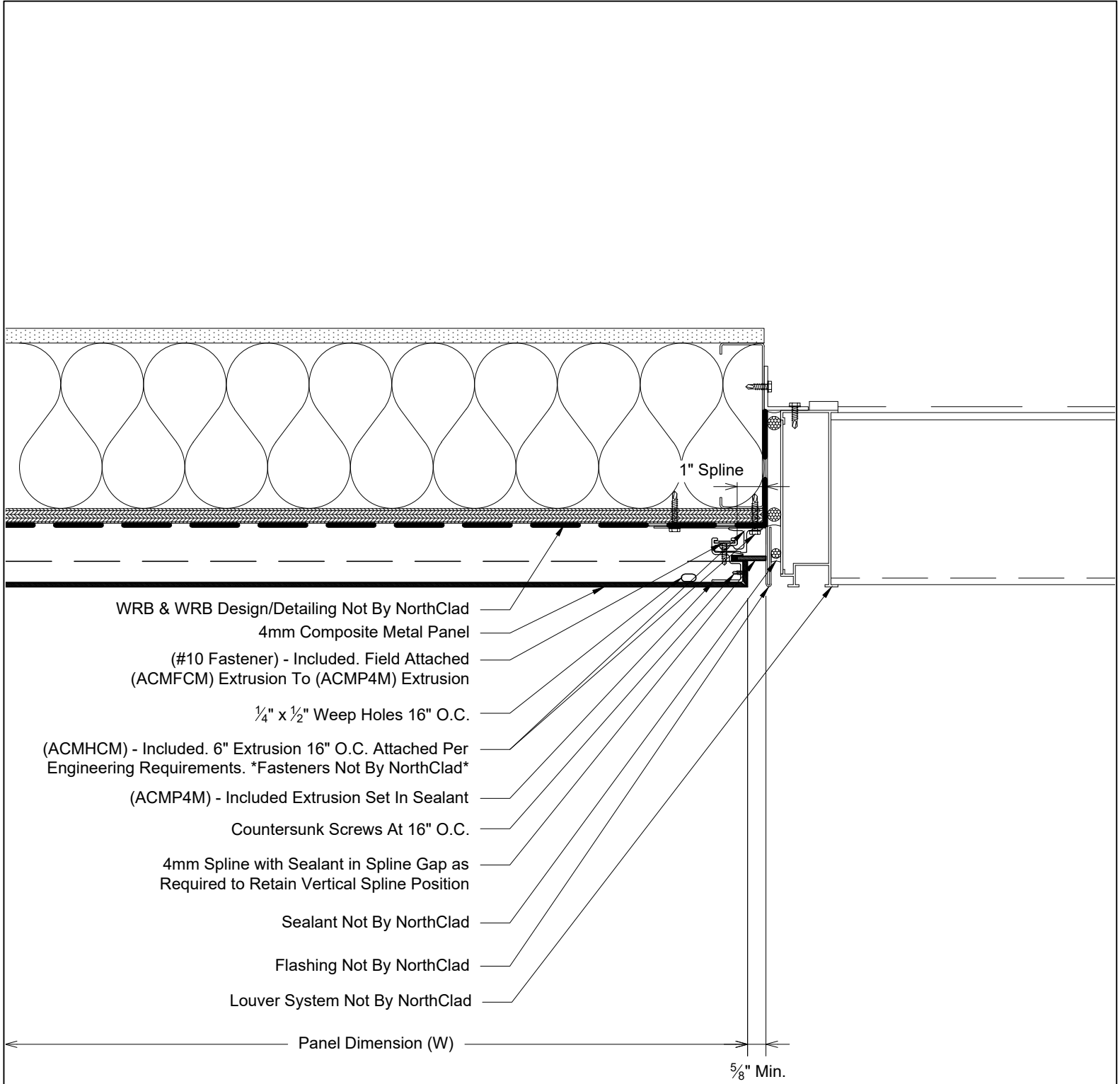
Panel Dimension (W)

5/8" Min.

J1

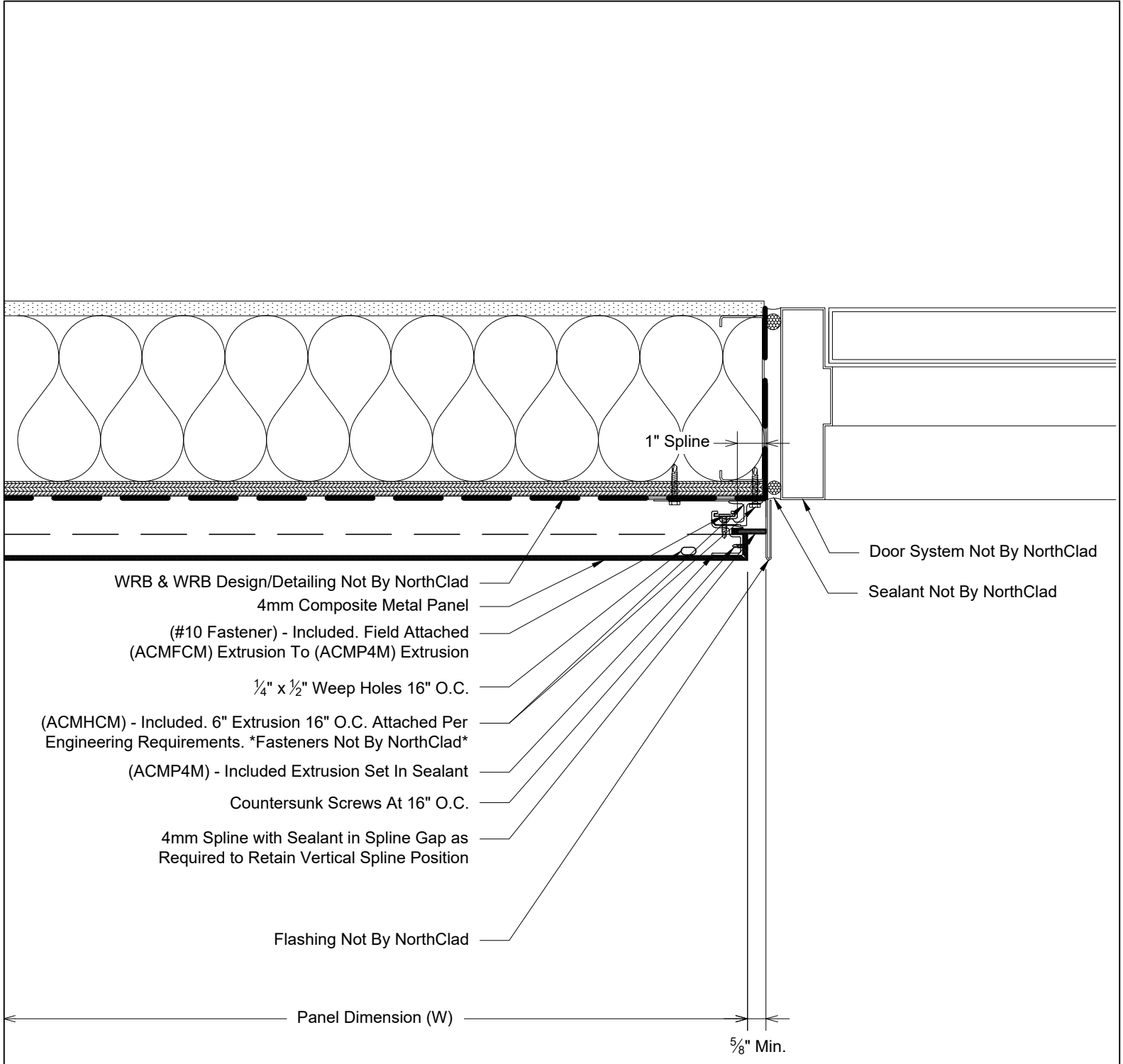
Plan - NorthClad ACM - Framed Opening Window Jamb  
 System: NorthClad ACM System





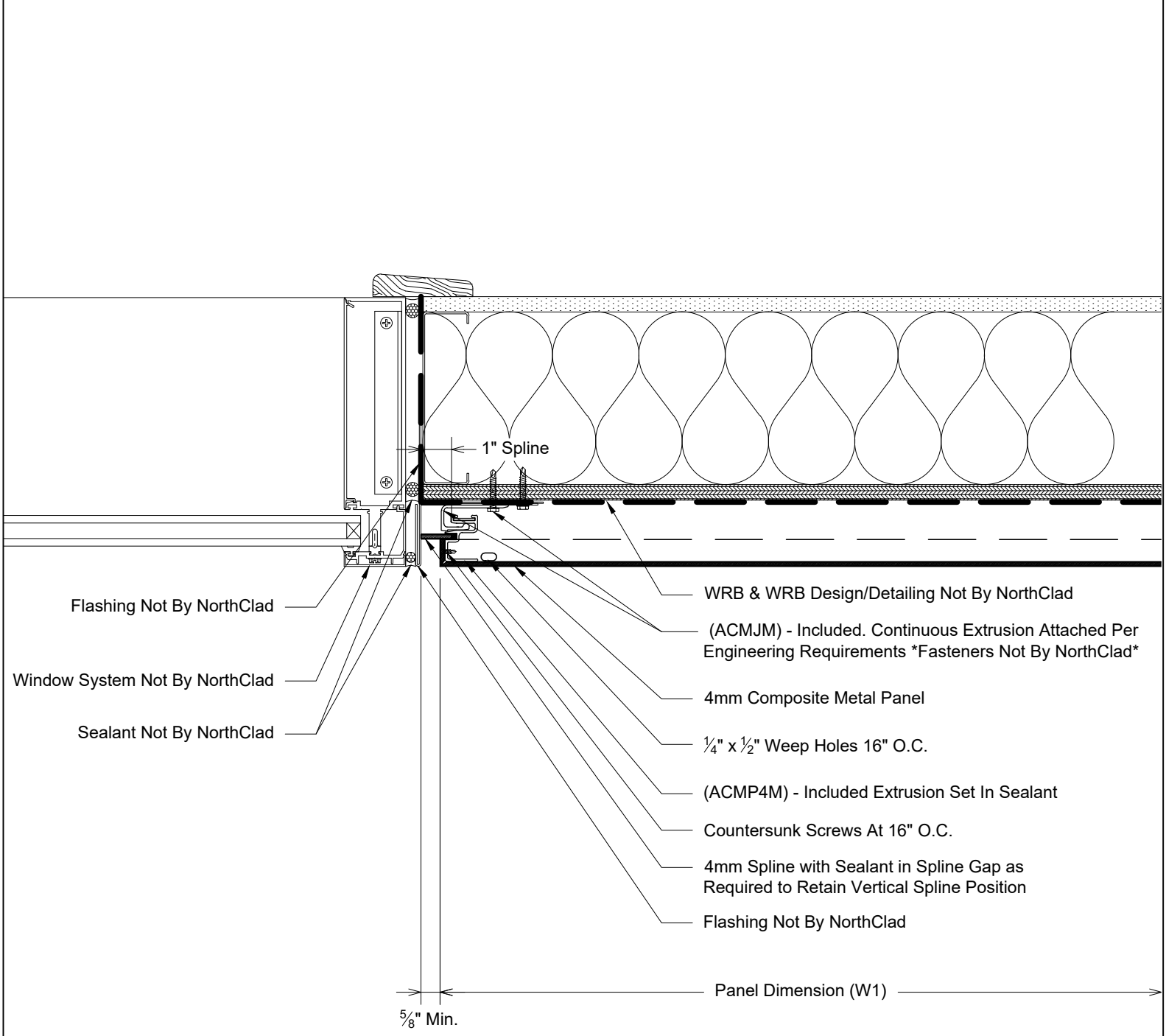
J2

Plan - NorthClad ACM - Framed Opening Louver Jamb  
 System: NorthClad ACM System



**J3**

Plan - NorthClad ACM - Framed Opening Door Jamb  
 System: NorthClad ACM System



Flashing Not By NorthClad

Window System Not By NorthClad

Sealant Not By NorthClad

1" Spline

WRB & WRB Design/Detailing Not By NorthClad

(ACMJM) - Included. Continuous Extrusion Attached Per Engineering Requirements \*Fasteners Not By NorthClad\*

4mm Composite Metal Panel

1/4" x 1/2" Weep Holes 16" O.C.

(ACMP4M) - Included Extrusion Set In Sealant

Countersunk Screws At 16" O.C.

4mm Spline with Sealant in Spline Gap as Required to Retain Vertical Spline Position

Flashing Not By NorthClad

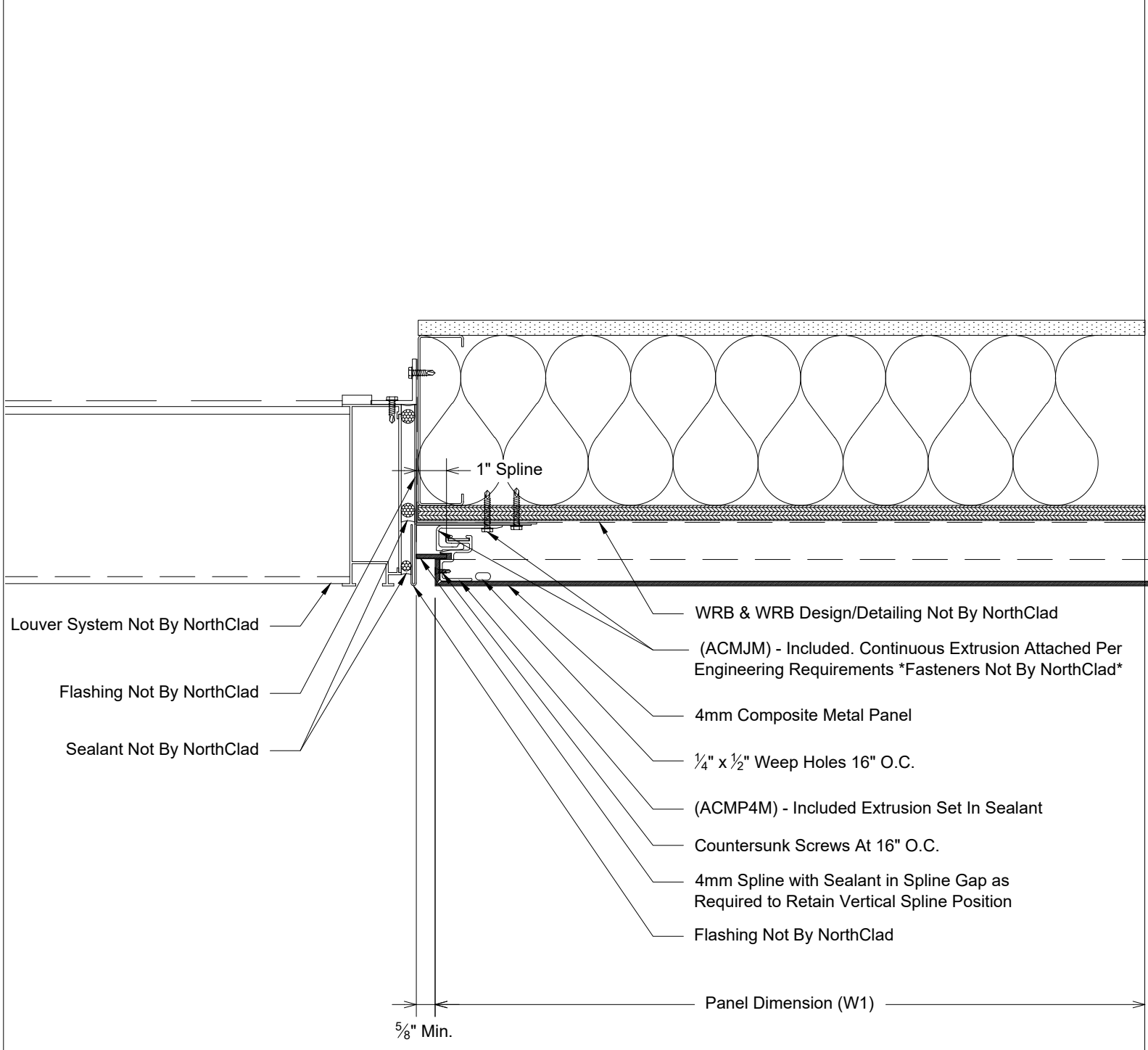
Panel Dimension (W1)

5/8" Min.

**K1**

Plan - NorthClad ACM - Framed Opening Window Jamb

System: NorthClad ACM System



Louver System Not By NorthClad

Flashing Not By NorthClad

Sealant Not By NorthClad

WRB & WRB Design/Detailing Not By NorthClad

(ACMJM) - Included. Continuous Extrusion Attached Per Engineering Requirements \*Fasteners Not By NorthClad\*

4mm Composite Metal Panel

1/4" x 1/2" Weep Holes 16" O.C.

(ACMP4M) - Included Extrusion Set In Sealant

Countersunk Screws At 16" O.C.

4mm Spline with Sealant in Spline Gap as Required to Retain Vertical Spline Position

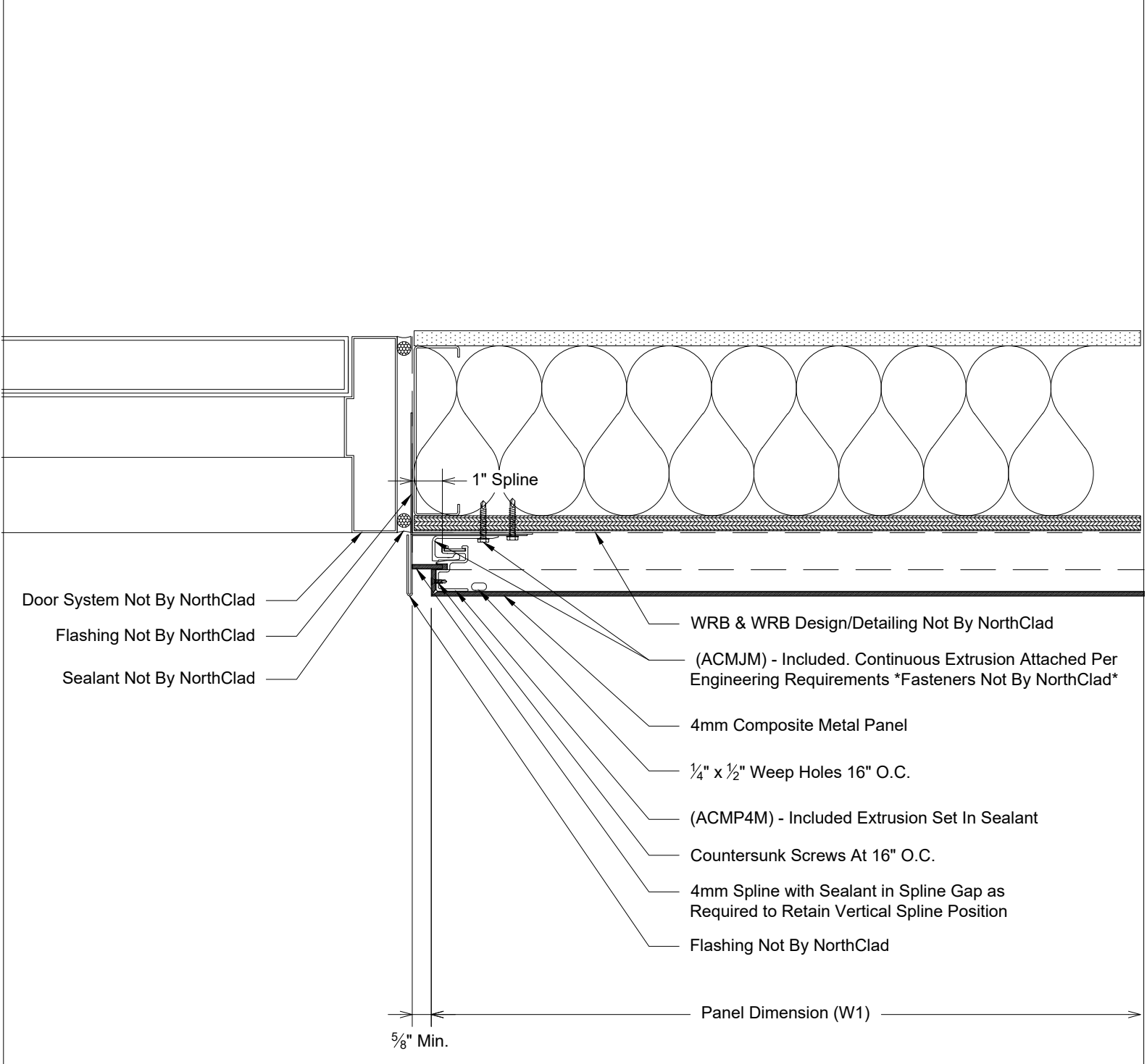
Flashing Not By NorthClad

5/8" Min.

Panel Dimension (W1)

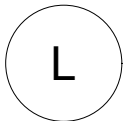
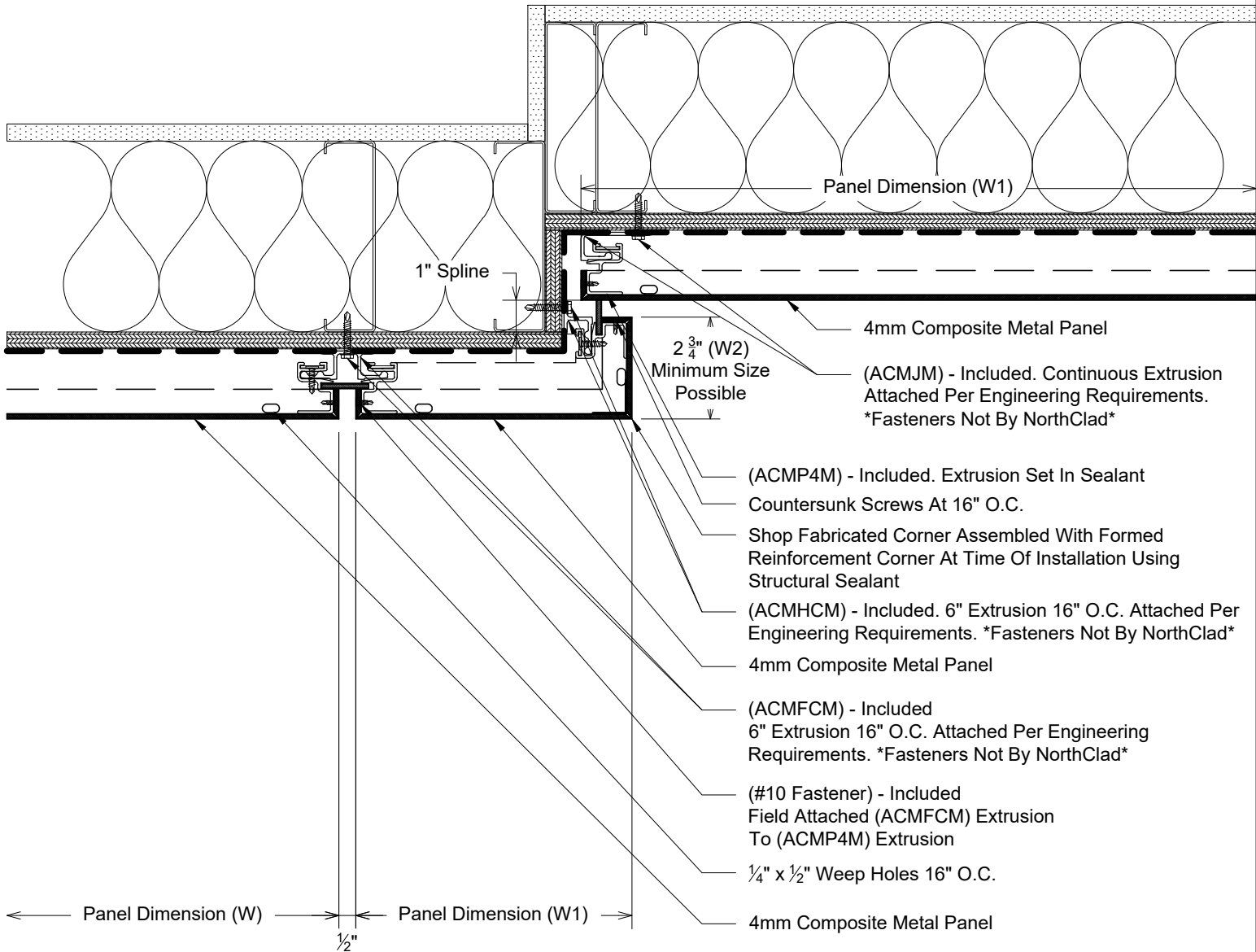
K2

Plan - NorthClad ACM - Framed Opening Louver Jamb  
 System: NorthClad ACM System

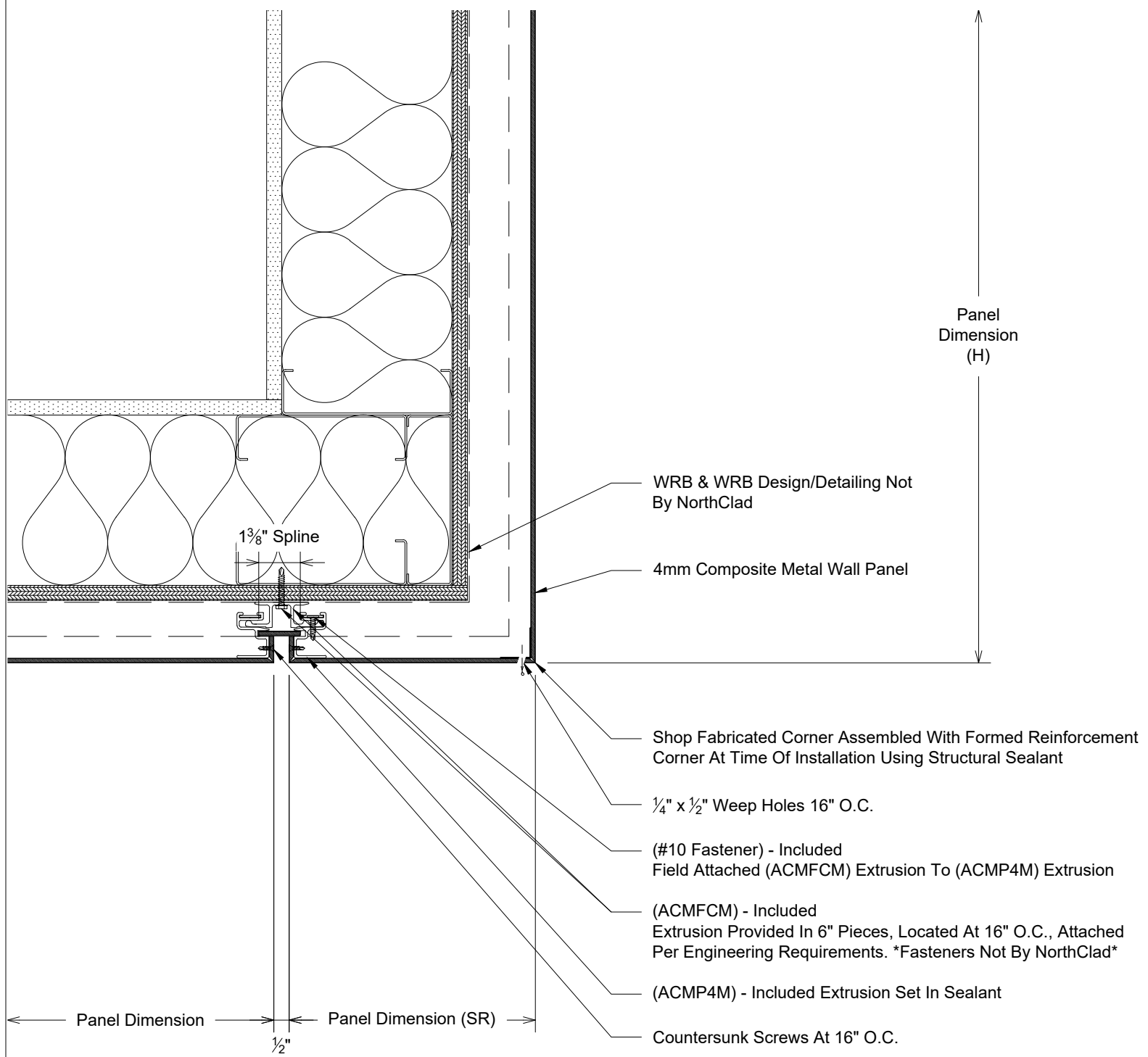


**K3**

Plan - NorthClad ACM - Framed Opening Door Jamb  
 System: NorthClad ACM System

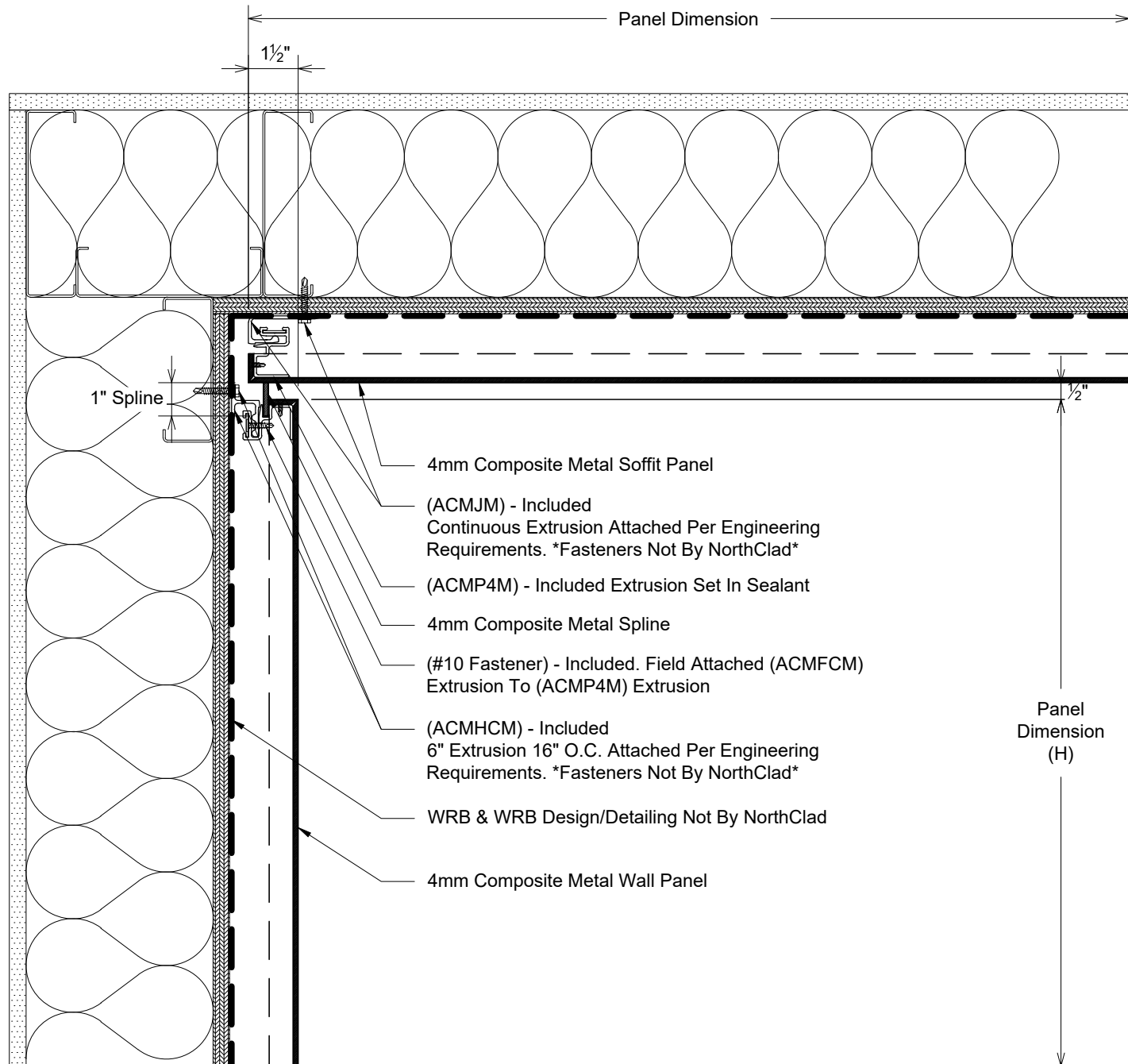


Plan - NorthClad ACM - Minimum Outside Corner  
System: NorthClad ACM System

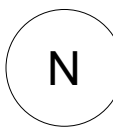


M

Section - NorthClad ACM - Fascia to Soffit  
System: NorthClad ACM System



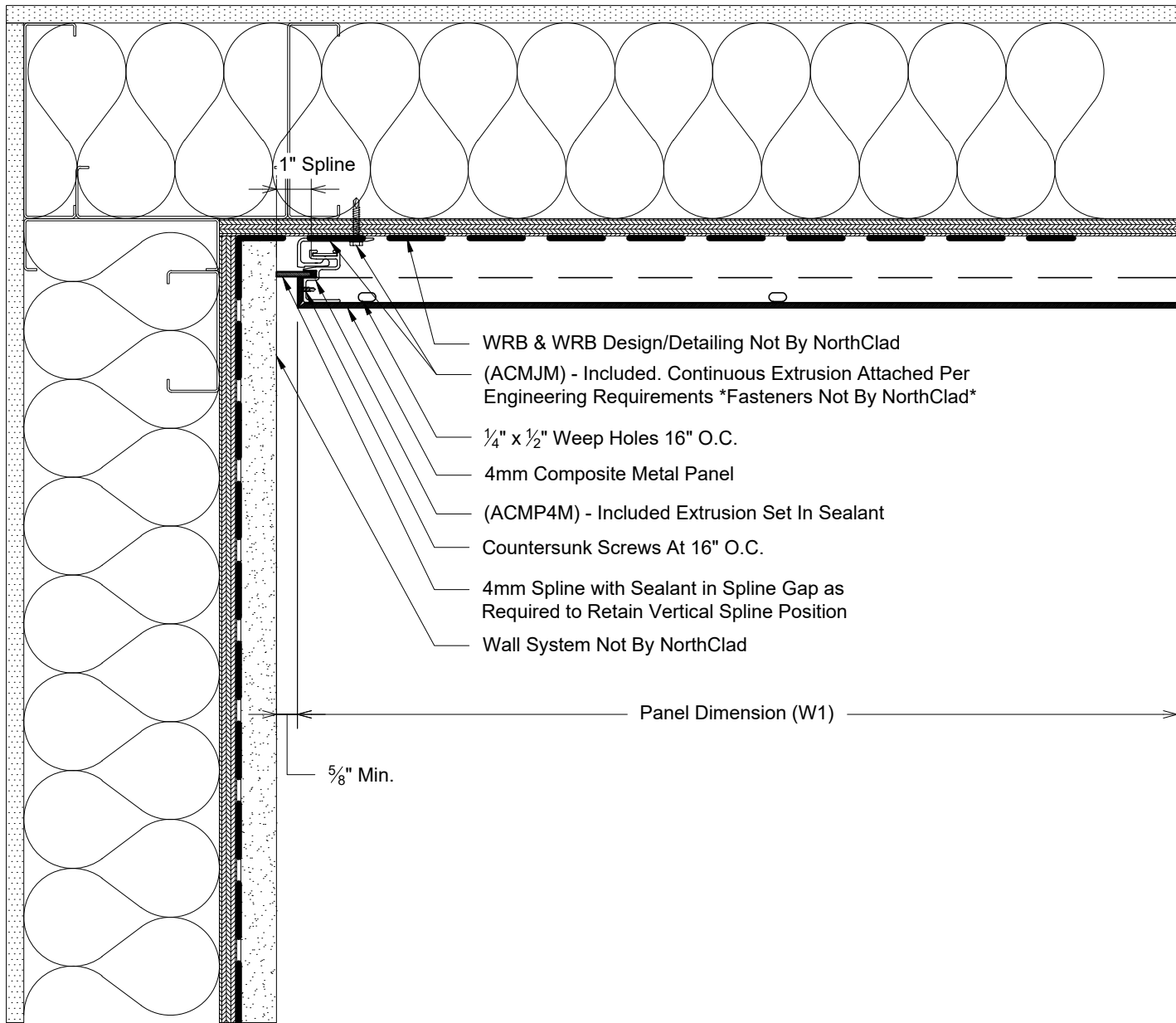
- 4mm Composite Metal Soffit Panel
- (ACMJM) - Included  
Continuous Extrusion Attached Per Engineering  
Requirements. \*Fasteners Not By NorthClad\*
- (ACMP4M) - Included Extrusion Set In Sealant
- 4mm Composite Metal Spline
- (#10 Fastener) - Included. Field Attached (ACMFCM)  
Extrusion To (ACMP4M) Extrusion
- (ACMHCM) - Included  
6" Extrusion 16" O.C. Attached Per Engineering  
Requirements. \*Fasteners Not By NorthClad\*
- WRB & WRB Design/Detailing Not By NorthClad
- 4mm Composite Metal Wall Panel



Section - NorthClad ACM - Soffit to Wall Inside Corner

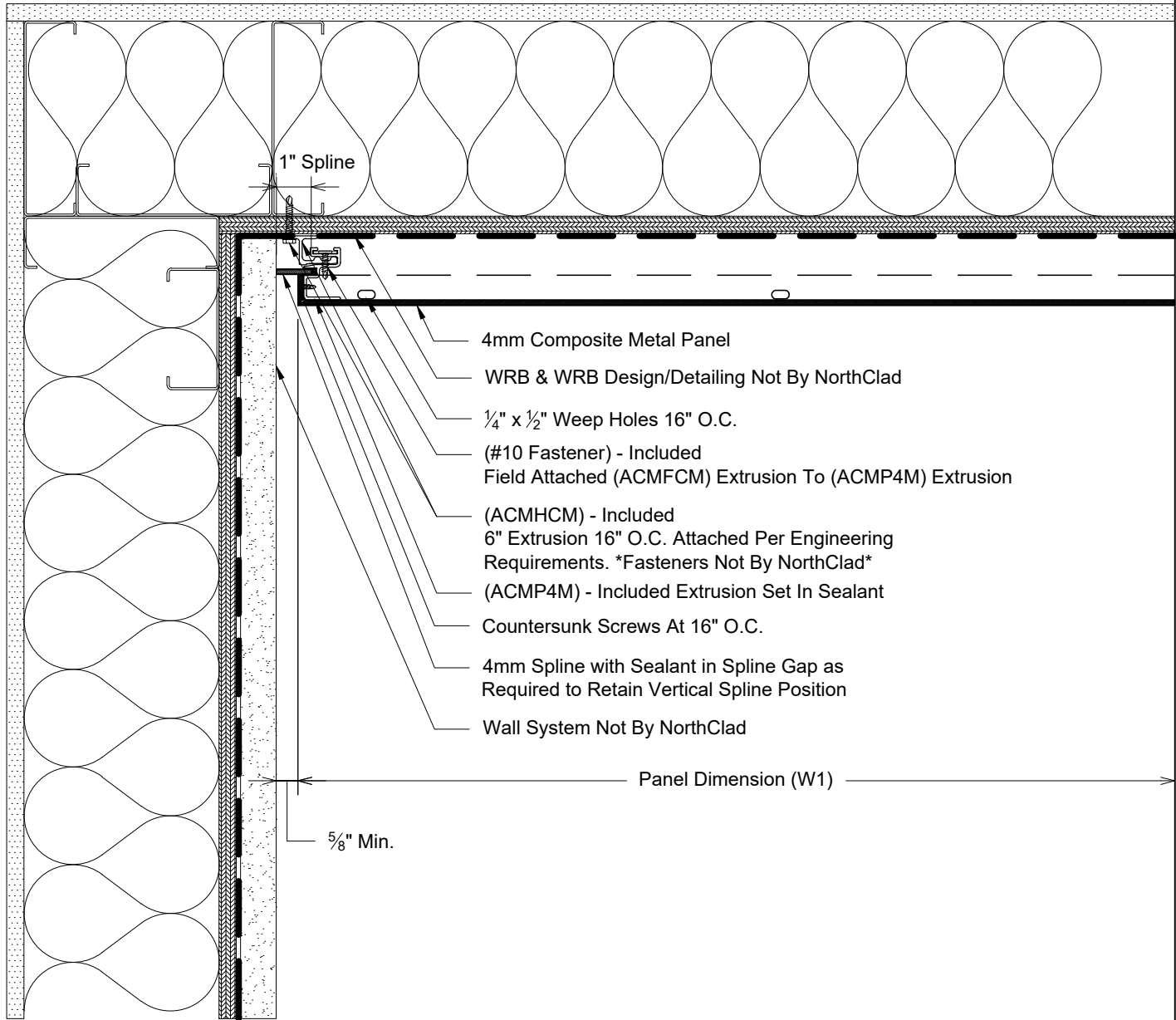
System: NorthClad ACM System





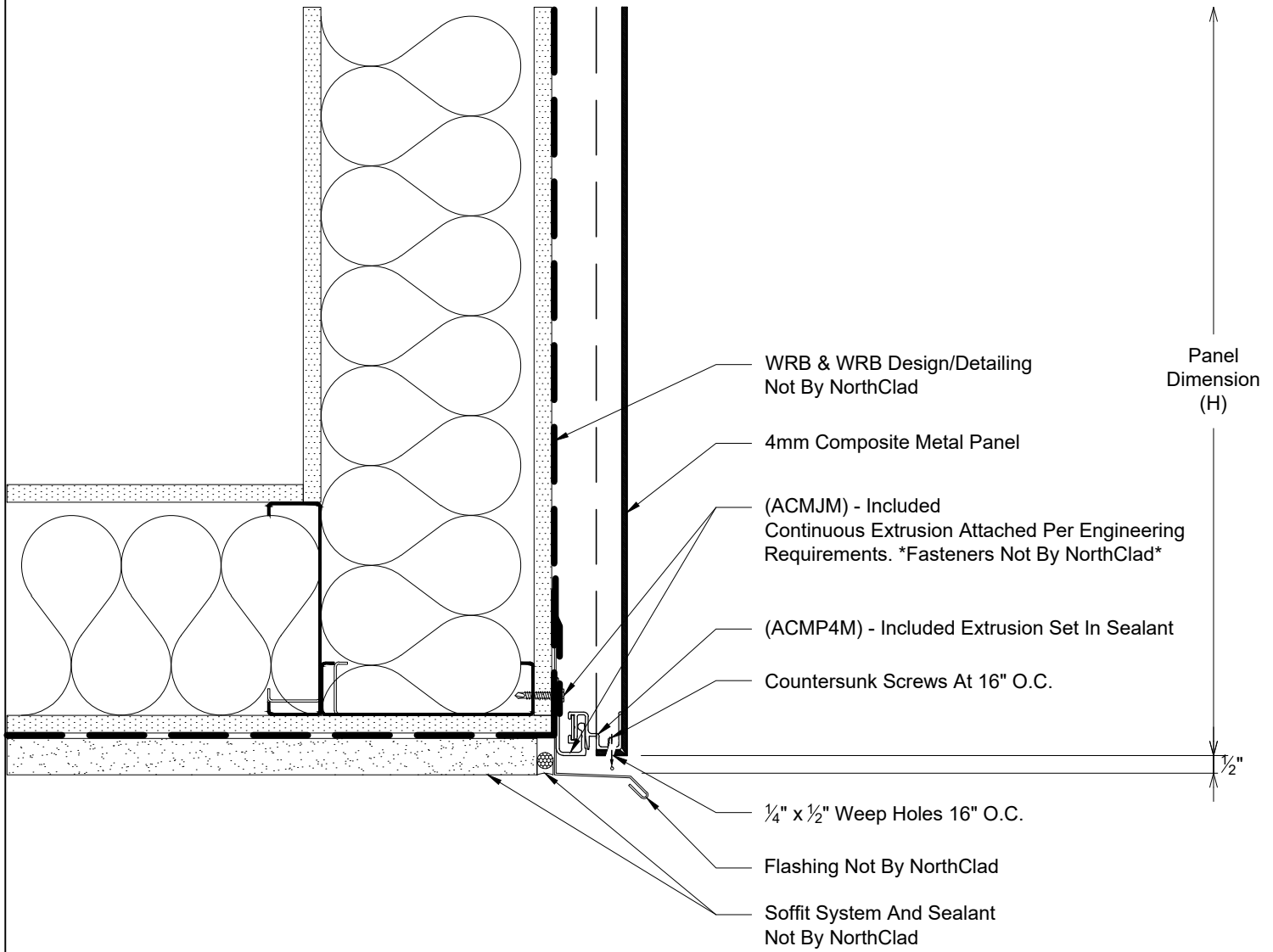
P

Plan - NorthClad ACM - Inside Corner Termination  
 System: NorthClad ACM System



P2

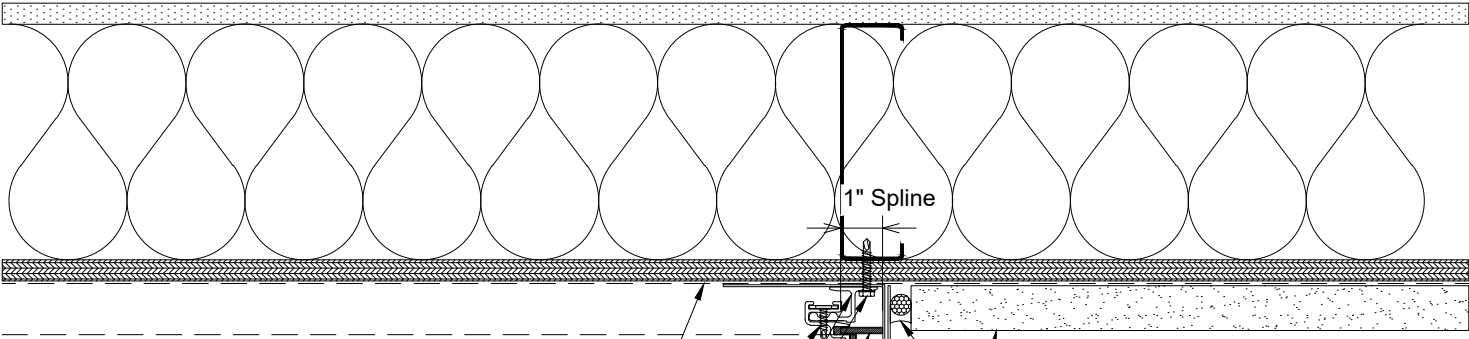
Plan - NorthClad ACM - Inside Corner Termination  
System: NorthClad ACM System



Q

Section - NorthClad ACM - Fascia to Soffit by Others

System: NorthClad ACM System



WRB & WRB Design/Detailing Not By NorthClad

4mm Composite Metal Panel

1/4" x 1/2" Weep Holes 16" O.C.

(#10 Fastener) - Included

Field Attached (ACMFCM)

Extrusion To (ACMP4M) Extrusion

(ACMHCM) - Included

6" Extrusion 16" O.C. Attached Per Engineering Requirements. \*Fasteners Not By NorthClad\*

(ACMP4M) - Included Extrusion Set In Sealant

Countersunk Screws At 16" O.C.

4mm Spline with Sealant in Spline Gap as Required to Retain Vertical Spline Position

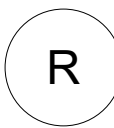
Flashing Not By NorthClad

Wall System And Sealant Not By NorthClad

1" Spline

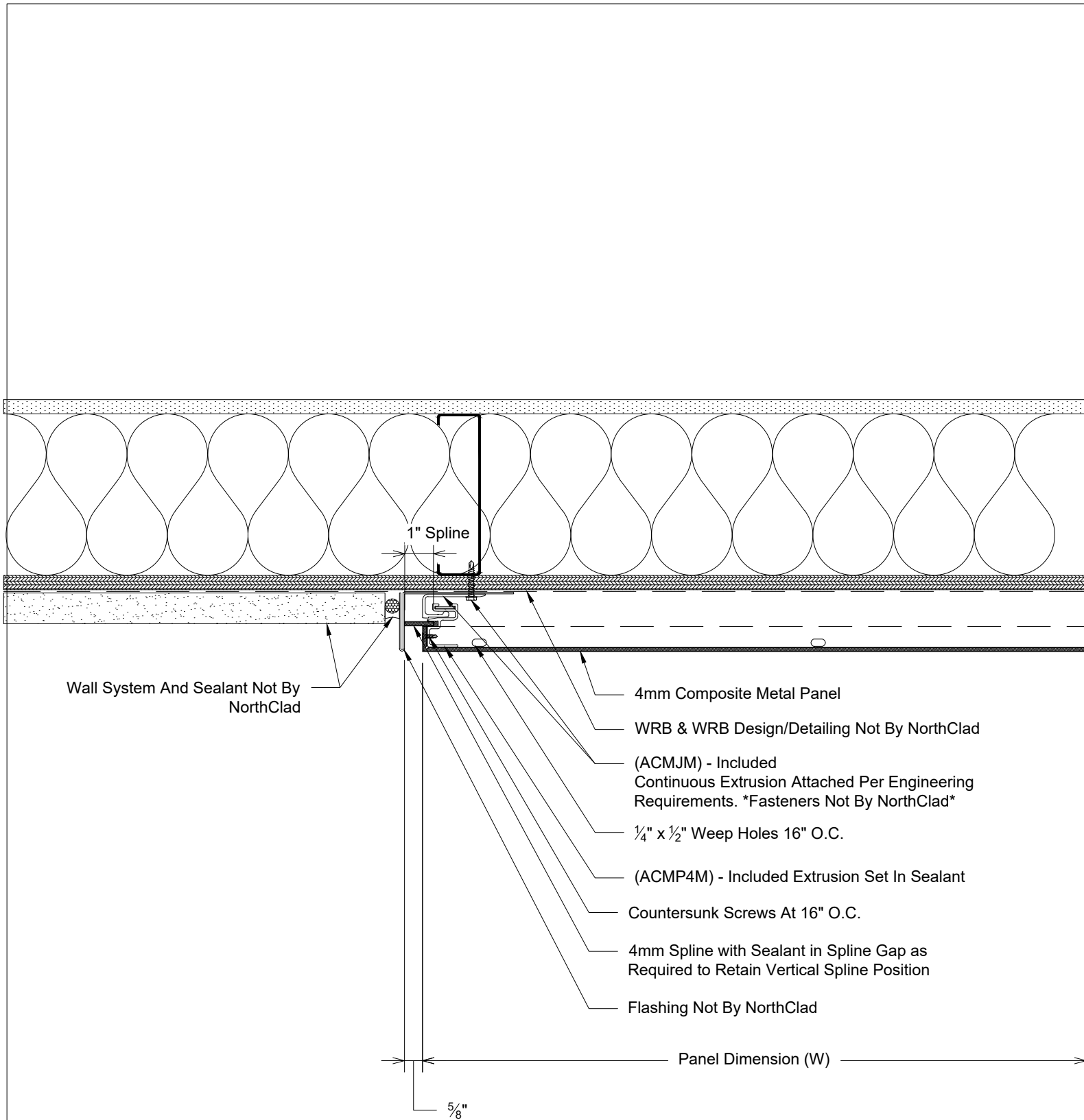
Panel Dimension (W)

5/8" Min.



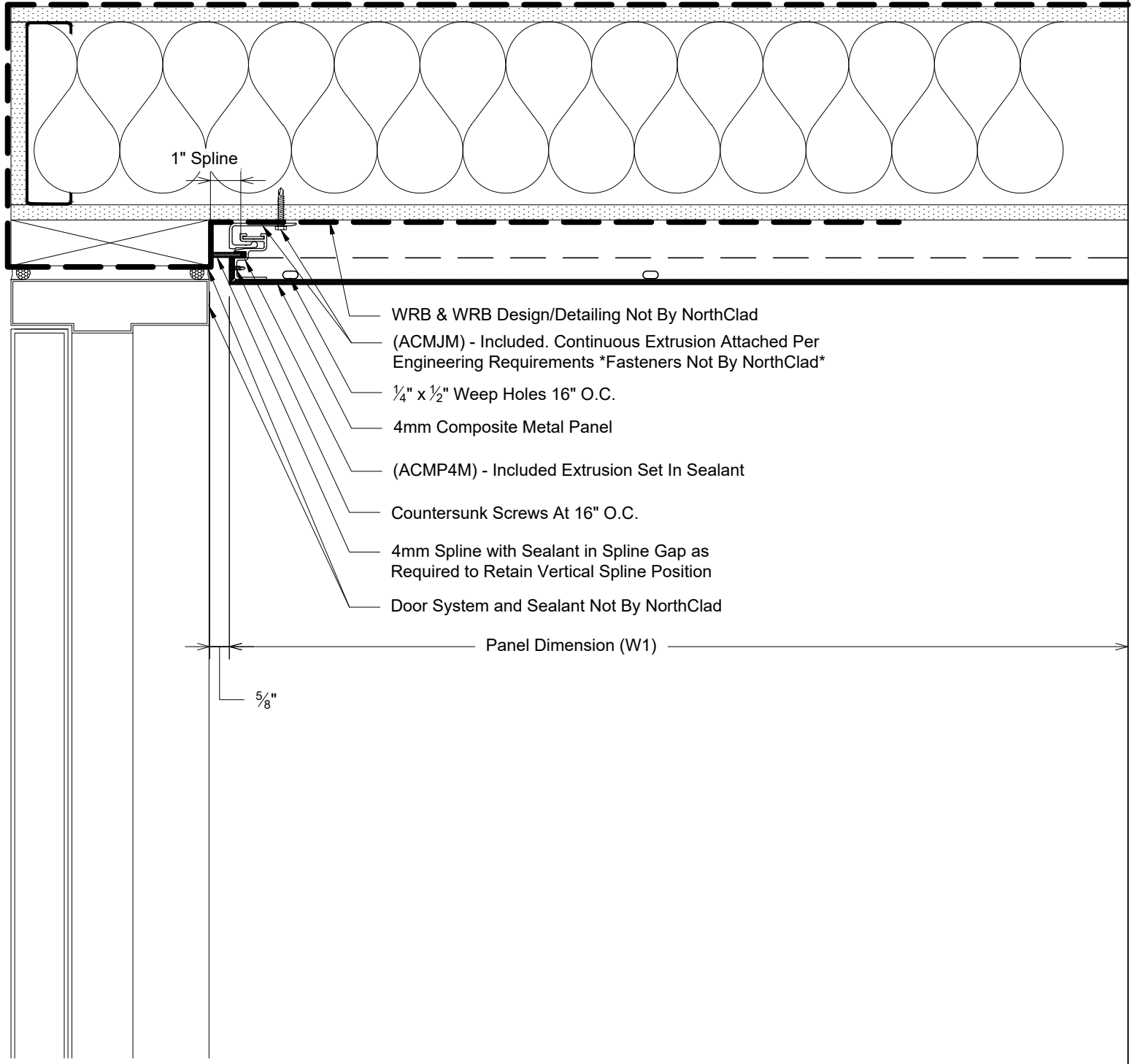
Plan - NorthClad ACM - Termination to Adjacent Materials

System: NorthClad ACM System



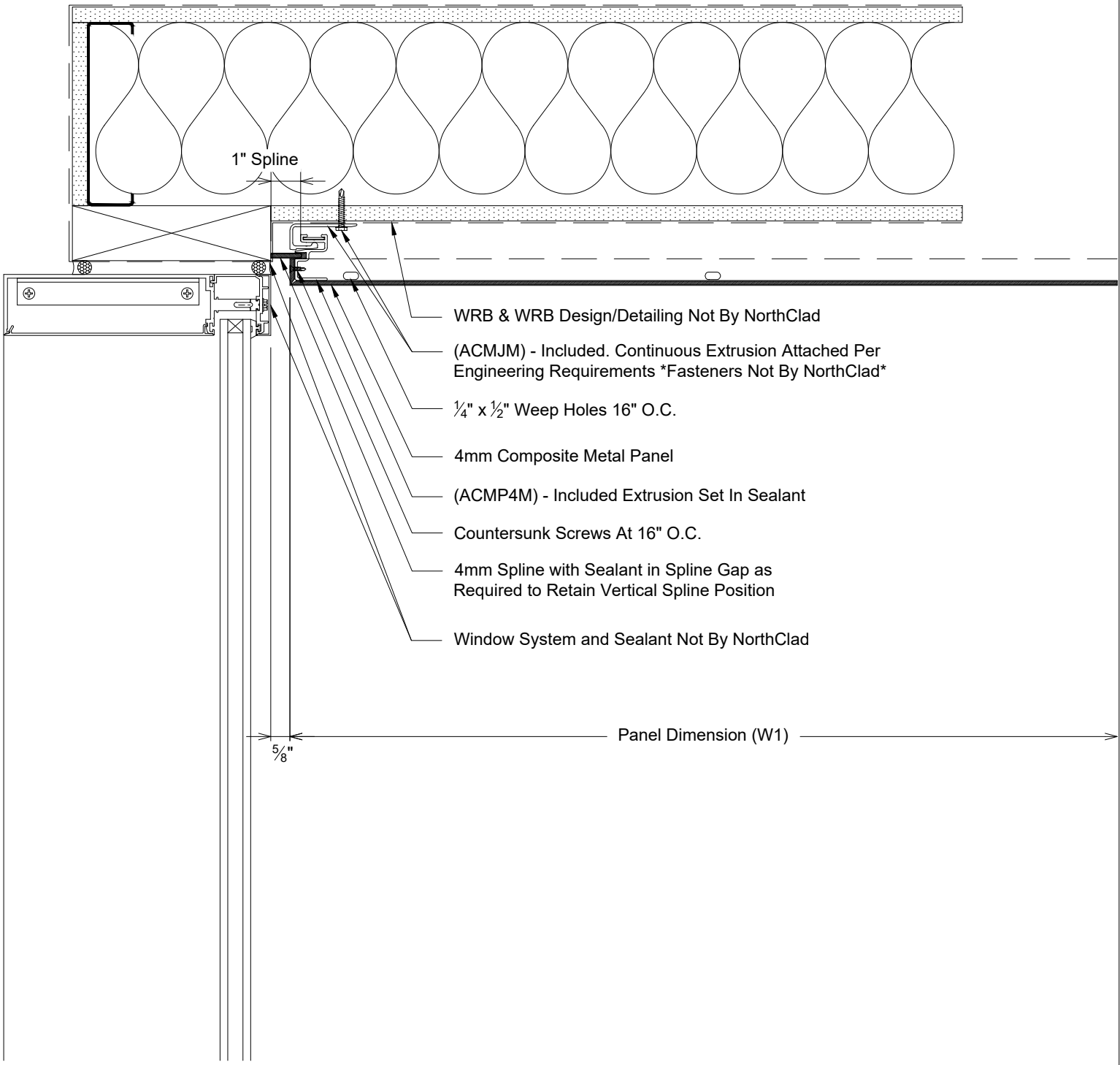
R2

Plan - NorthClad ACM - Termination to Adjacent Materials  
System: NorthClad ACM System



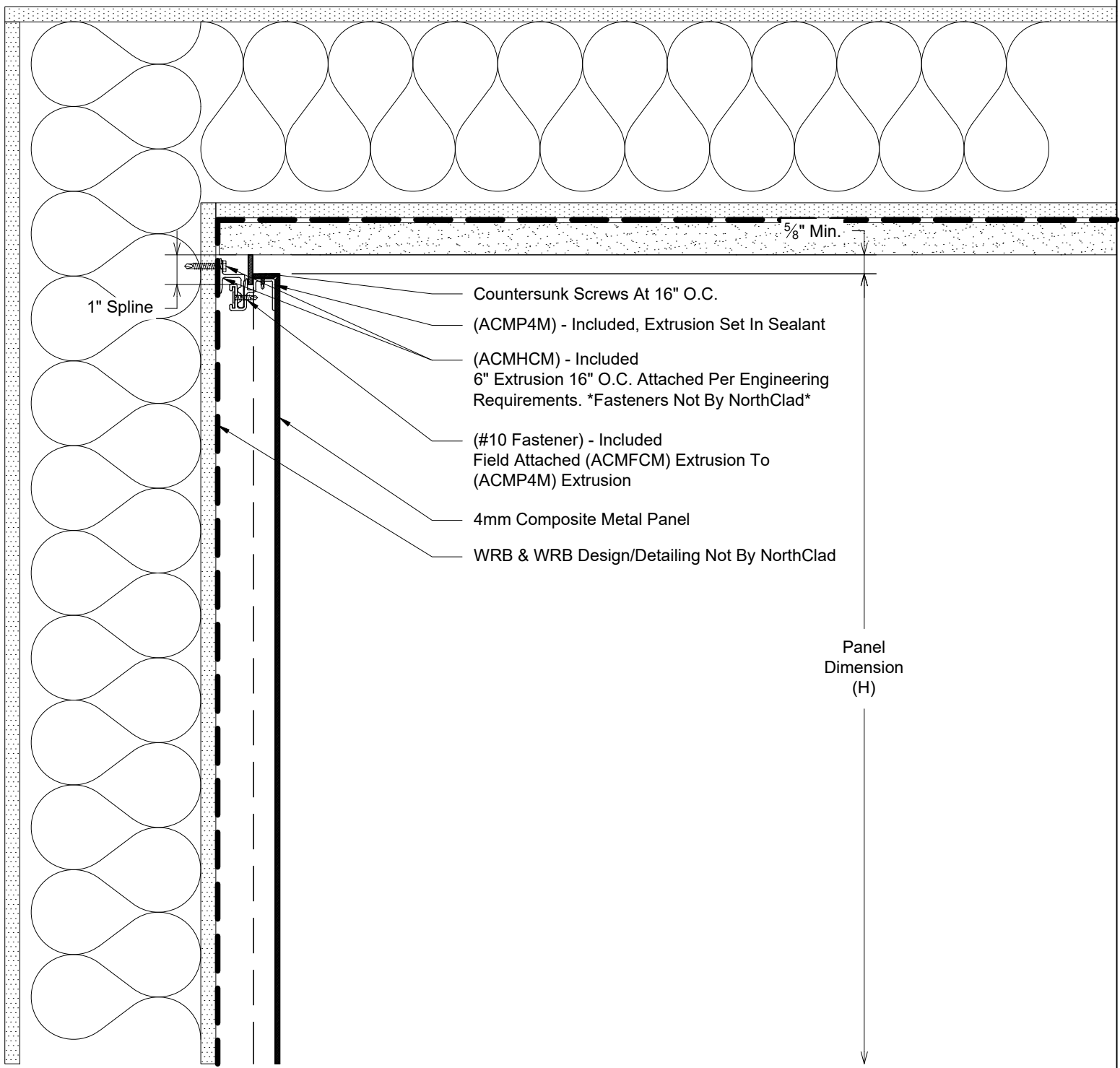
T

Plan - NorthClad ACM - Inside Corner to Jamb  
 System: NorthClad ACM System



U

Section - NorthClad ACM - Soffit to Window Header  
 System: NorthClad ACM System

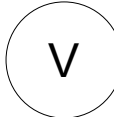


1" Spline

5/8" Min.

- Countersunk Screws At 16" O.C.
- (ACMP4M) - Included, Extrusion Set In Sealant
- (ACMHCM) - Included
- 6" Extrusion 16" O.C. Attached Per Engineering Requirements. \*Fasteners Not By NorthClad\*
- (#10 Fastener) - Included
- Field Attached (ACMFCM) Extrusion To (ACMP4M) Extrusion
- 4mm Composite Metal Panel
- WRB & WRB Design/Detailing Not By NorthClad

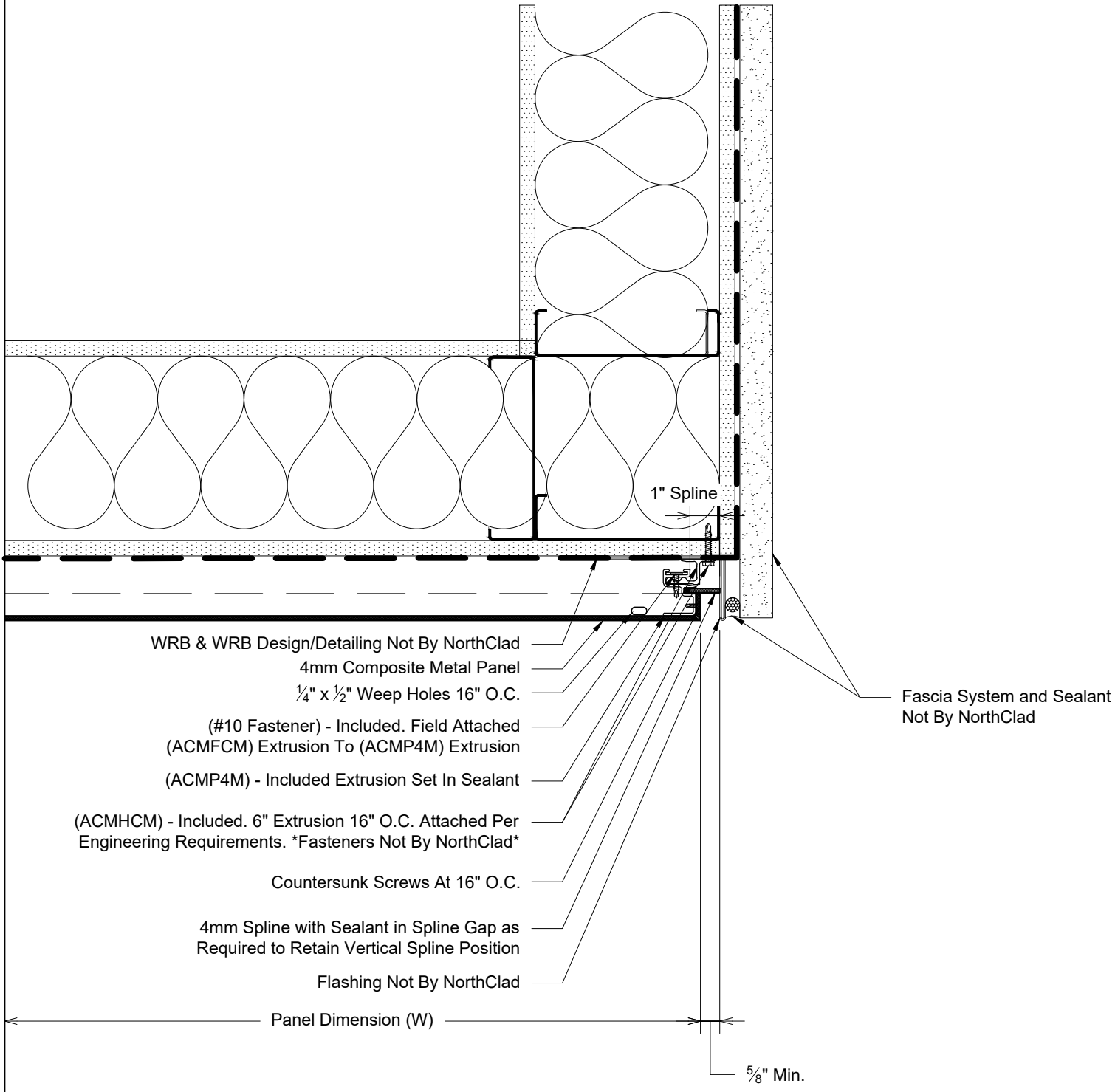
Panel Dimension (H)



Section - NorthClad ACM - Wall to Soffit by Others

System: NorthClad ACM System





W

Plan - NorthClad ACM - Outside Corner to System by Others  
 System: NorthClad ACM System