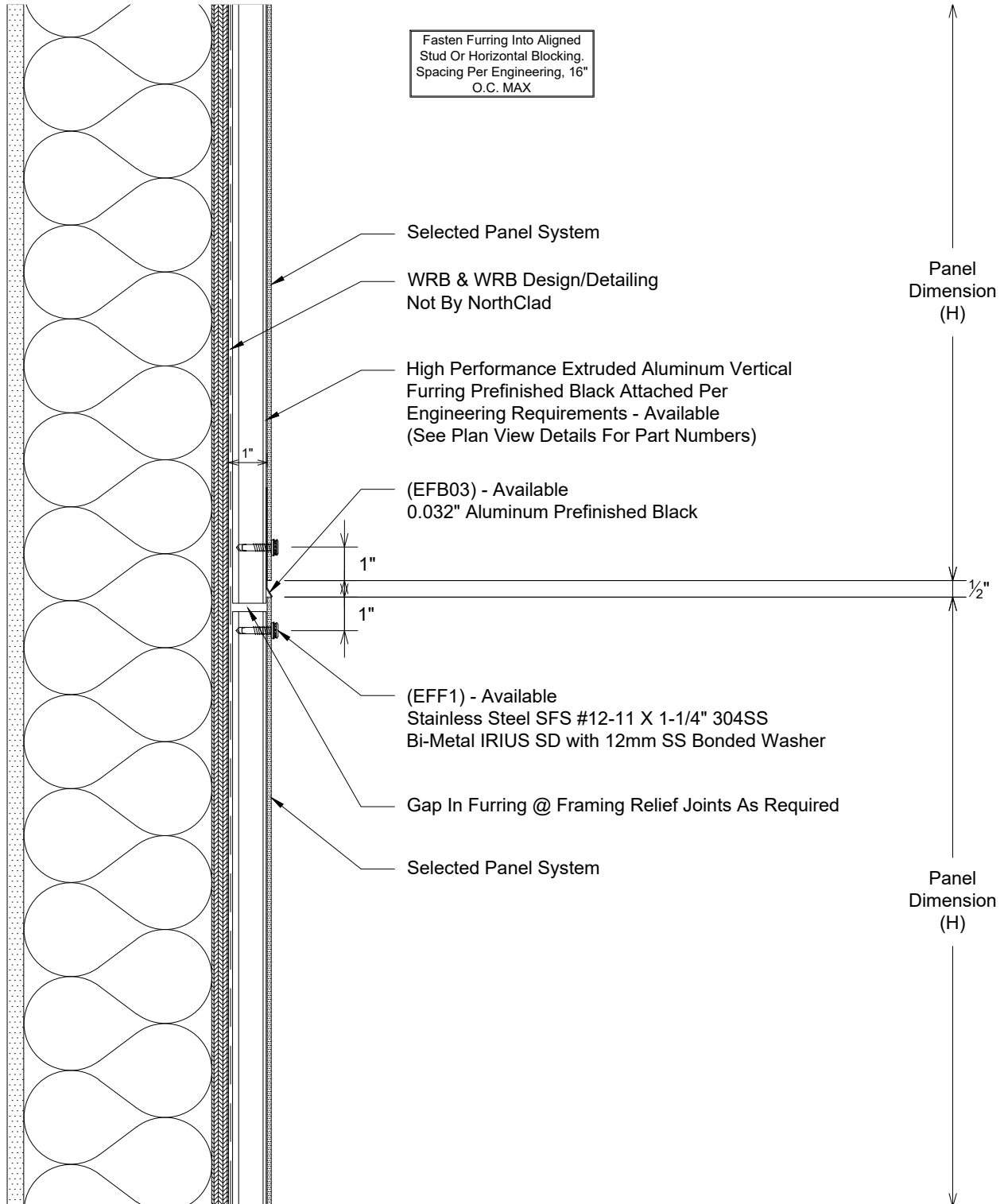


0

Isometric Key

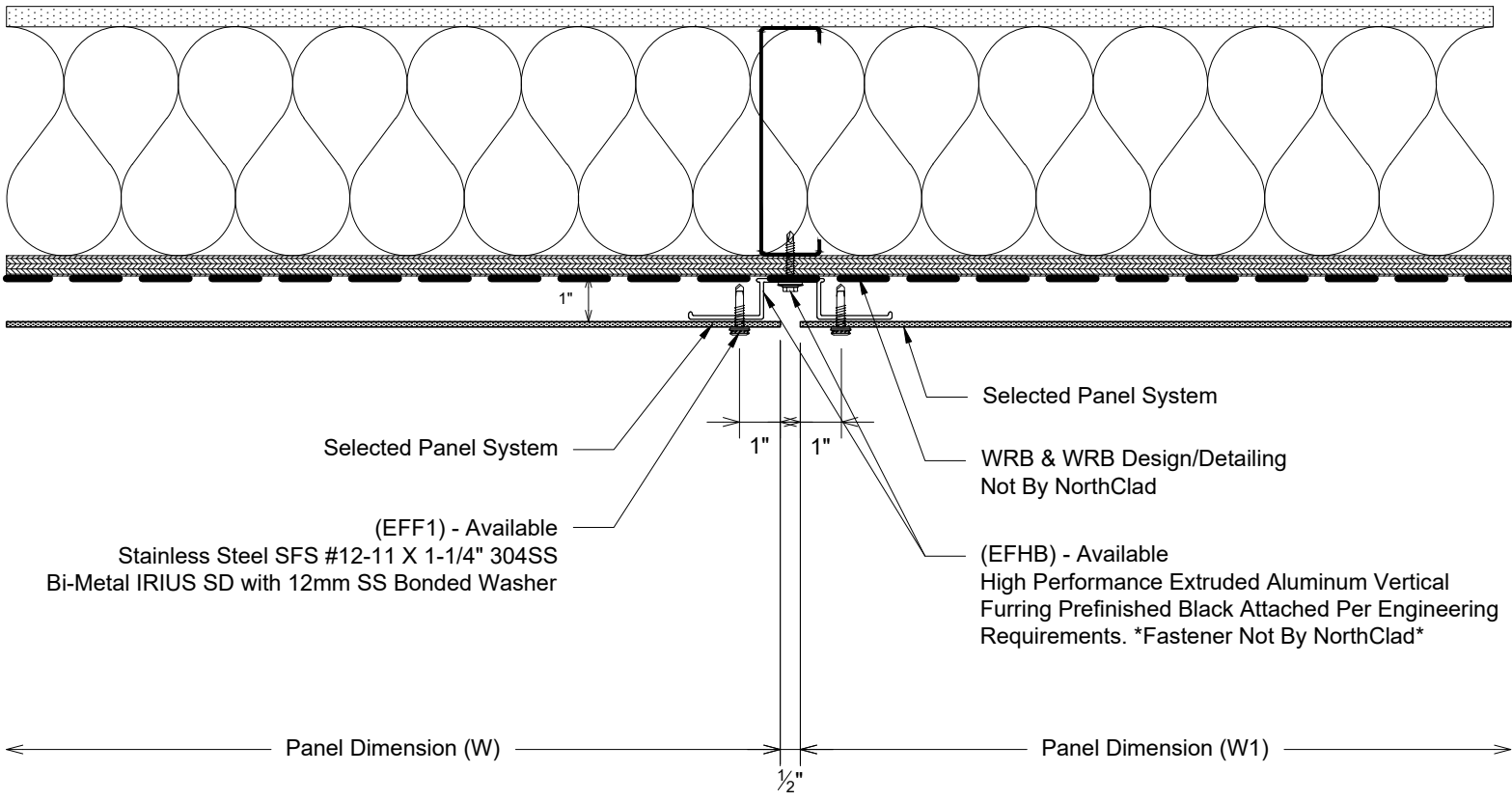
System: NorthClad EF System



A

Section - Horizontal Joint  
System: NorthClad EF System

Fasten Furring Into Aligned Stud Or Horizontal Blocking.  
Spacing Per Engineering, 16"  
O.C. MAX



Selected Panel System

Selected Panel System

WRB & WRB Design/Detailing  
Not By NorthClad

(EFF1) - Available  
Stainless Steel SFS #12-11 X 1-1/4" 304SS  
Bi-Metal IRIUS SD with 12mm SS Bonded Washer

(EFHB) - Available  
High Performance Extruded Aluminum Vertical  
Furring Prefinished Black Attached Per Engineering  
Requirements. \*Fastener Not By NorthClad\*

Panel Dimension (W)

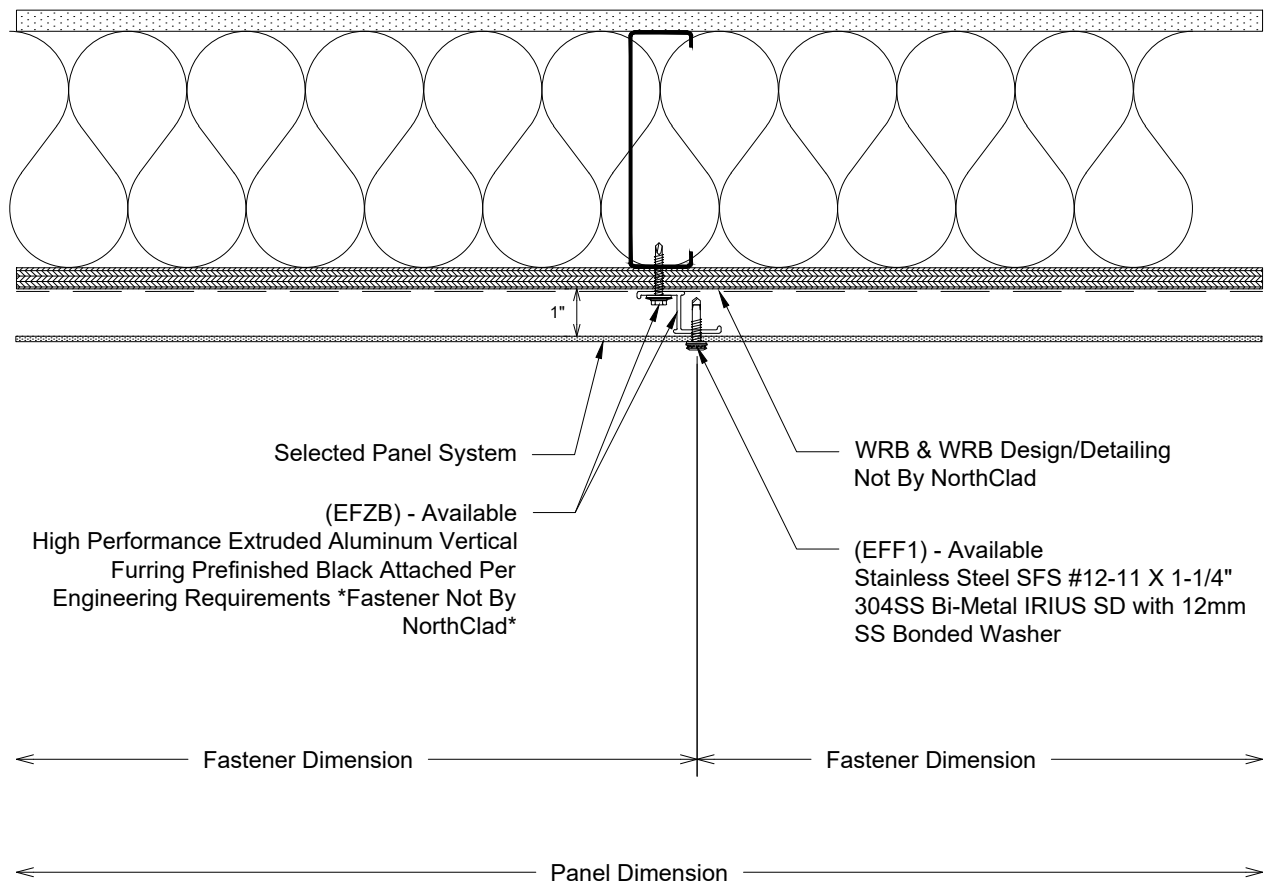
Panel Dimension (W1)

1/2"

**B**

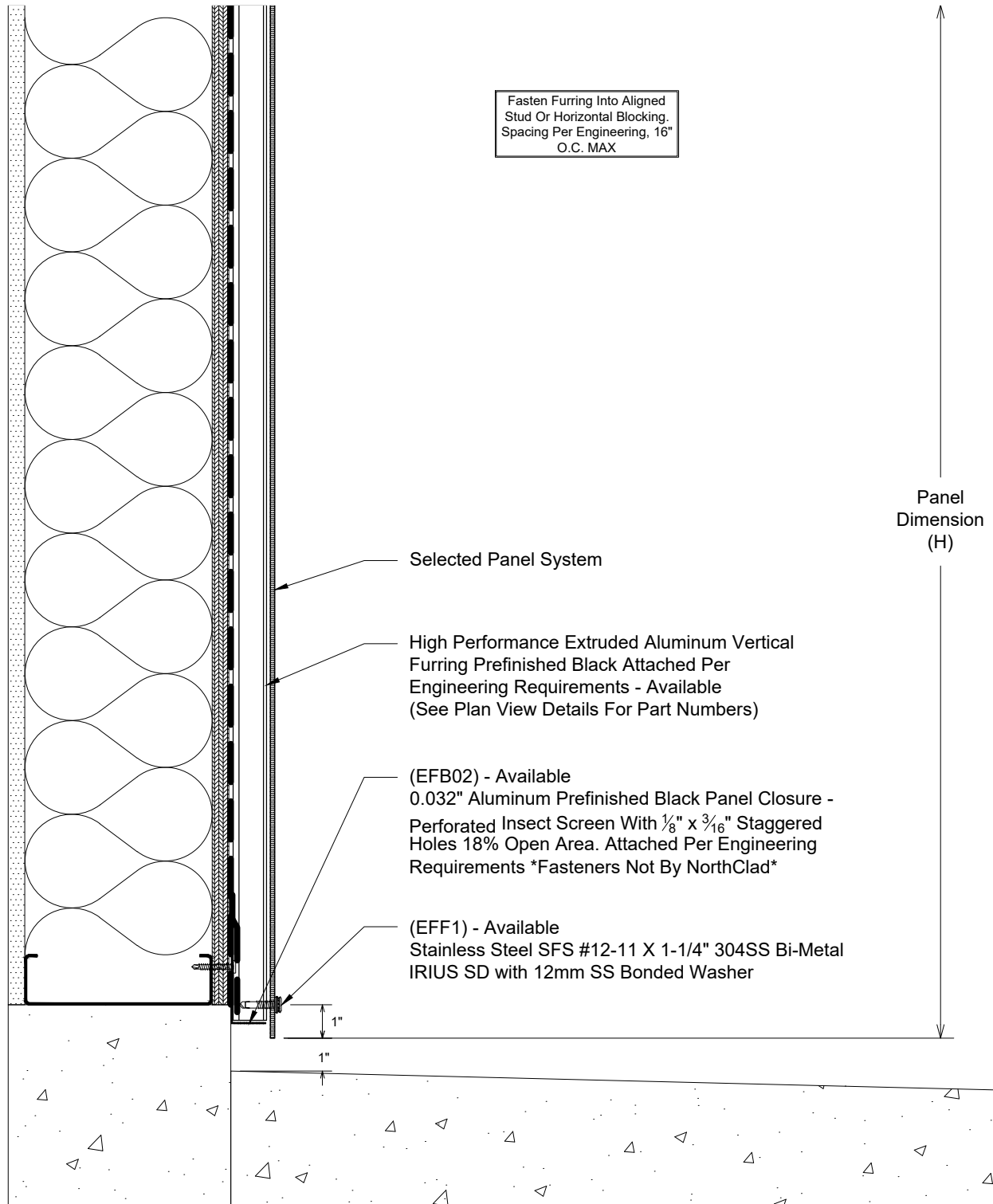
Plan - Vertical Joint  
System: NorthClad EF System

Fasten Furring Into Aligned Stud Or Horizontal Blocking.  
Spacing Per Engineering, 16"  
O.C. MAX



C

Plan - NorthClad EF - Vertical Fastener  
System: NorthClad EF System



Fasten Furring Into Aligned Stud Or Horizontal Blocking. Spacing Per Engineering, 16" O.C. MAX

Panel Dimension (H)

Selected Panel System

High Performance Extruded Aluminum Vertical Furring Prefinished Black Attached Per Engineering Requirements - Available (See Plan View Details For Part Numbers)

(EFB02) - Available  
0.032" Aluminum Prefinished Black Panel Closure - Perforated Insect Screen With 1/8" x 3/16" Staggered Holes 18% Open Area. Attached Per Engineering Requirements \*Fasteners Not By NorthClad\*

(EFF1) - Available  
Stainless Steel SFS #12-11 X 1-1/4" 304SS Bi-Metal IRIUS SD with 12mm SS Bonded Washer

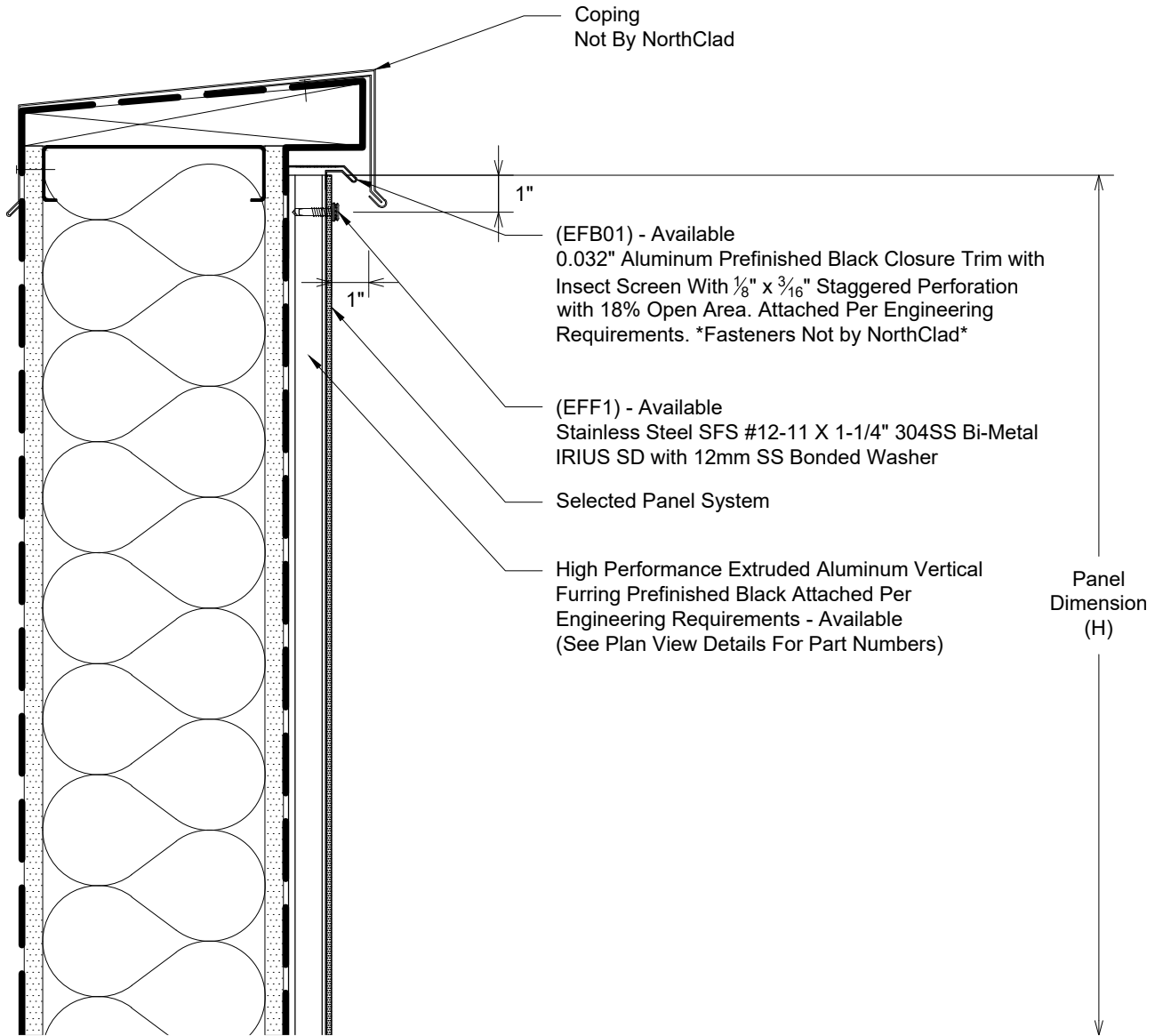
1"

1"

D

Section - NorthClad EF - Base of Wall  
System: NorthClad EF System

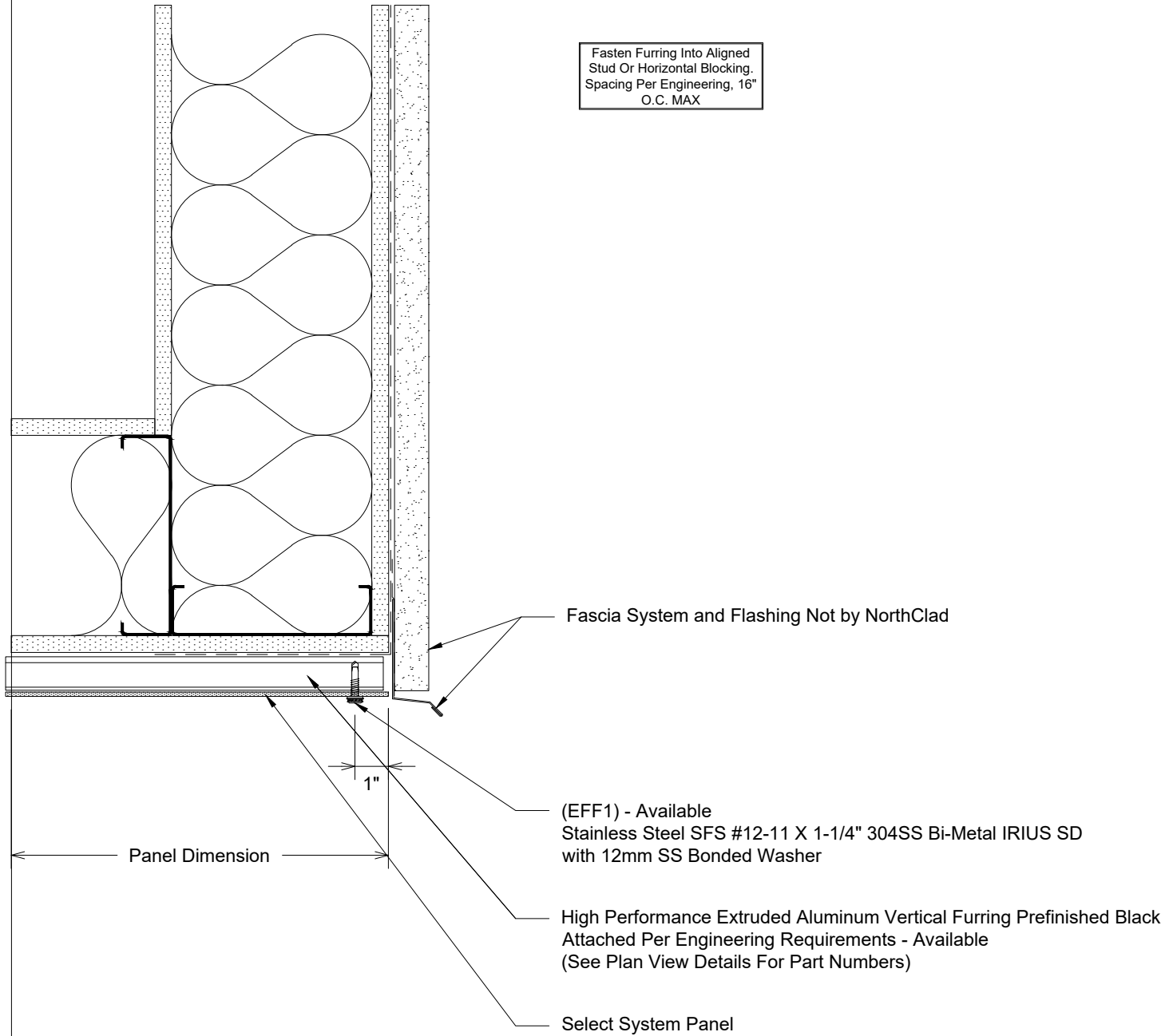
Fasten Furring Into Aligned Stud Or Horizontal Blocking. Spacing Per Engineering, 16" O.C. MAX



E

Section - NorthClad EF - Coping  
System: NorthClad EF System

Fasten Furring Into Aligned Stud Or Horizontal Blocking.  
Spacing Per Engineering, 16"  
O.C. MAX



F

Section - NorthClad EF - **Soffit to Fascia by Others**

System: NorthClad EF System

Fasten Furring Into Aligned Stud Or Horizontal Blocking. Spacing Per Engineering, 16" O.C. MAX

Panel Dimension (W1)

Selected Panel System

(EFEB) - Available  
High Performance Extruded Aluminum Vertical Furring  
Prefinished Black Attached Per Engineering Requirements  
\*Fasteners Not By NorthClad\*

(EFF1) - Available  
Stainless Steel SFS #12-11 X 1-1/4" 304SS  
Bi-Metal IRIUS SD with 12mm SS Bonded Washer

(EFEB) - Available  
High Performance Extruded Aluminum Vertical Furring  
Prefinished Black Attached Per Engineering Requirements  
\*Fasteners Not By NorthClad\*

Panel Dimension (W)

1/2"

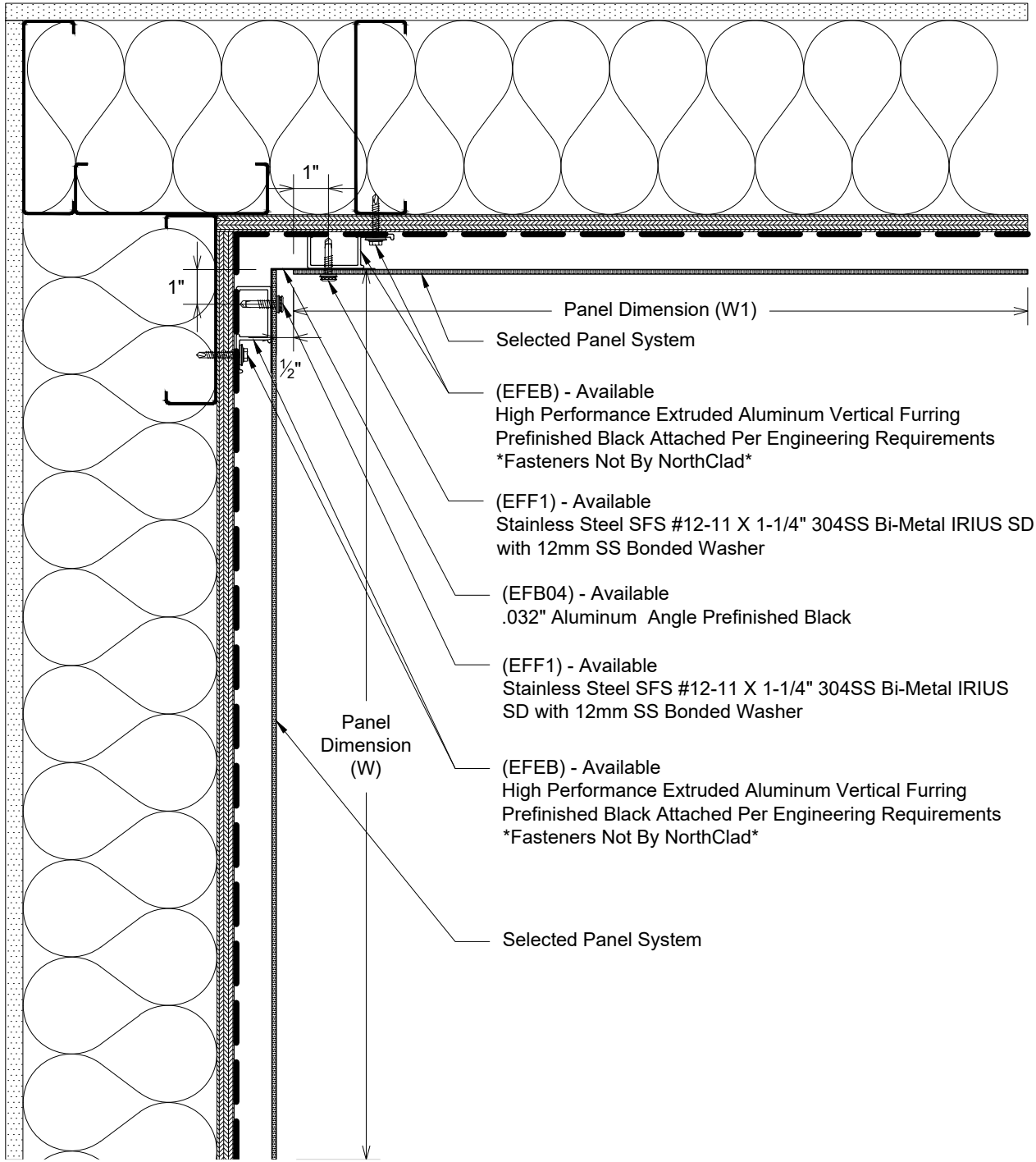
G

Plan - NorthClad EF - Outside Corner

System: NorthClad EF System

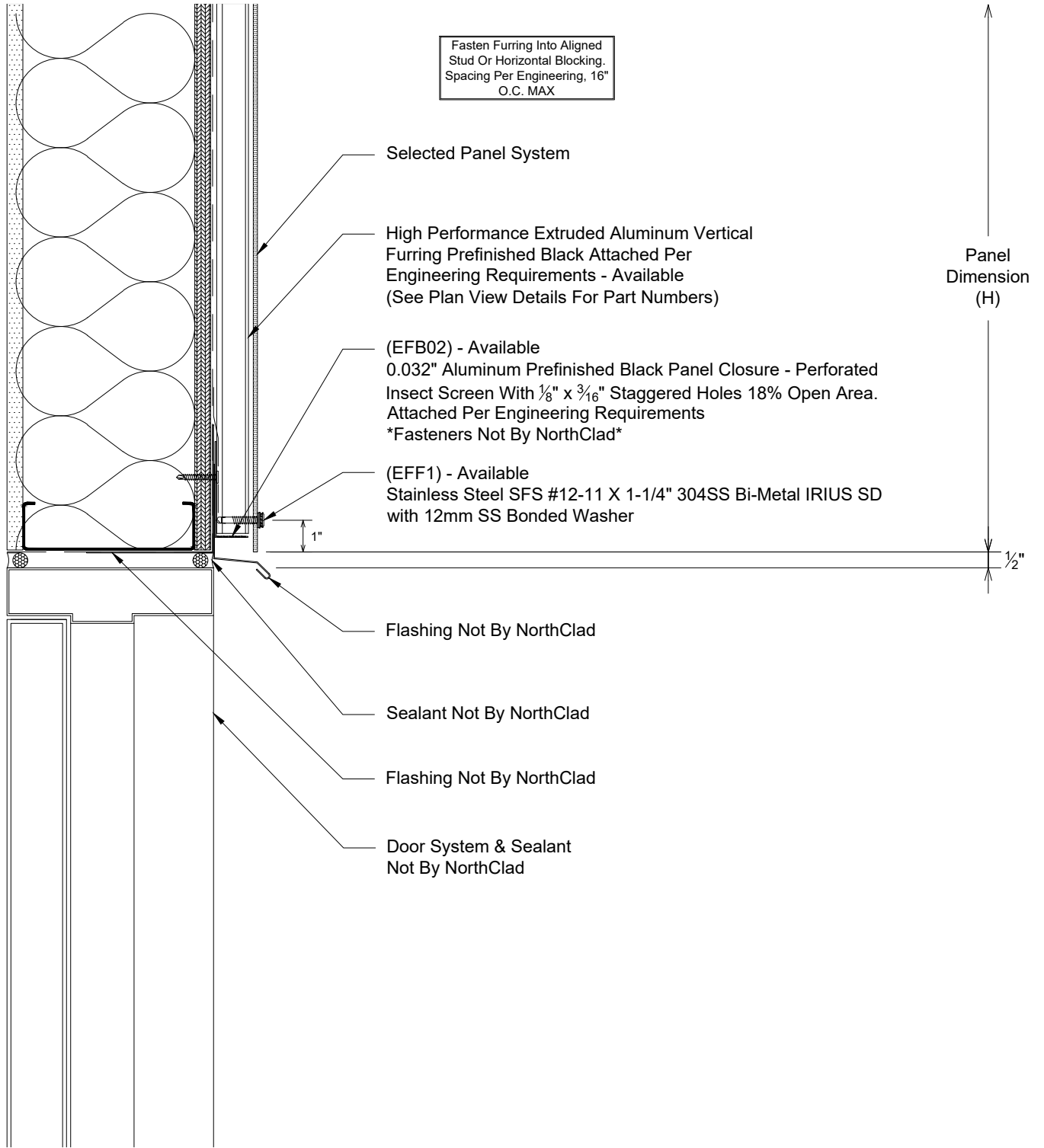


Fasten Furring Into Aligned Stud Or Horizontal Blocking.  
Spacing Per Engineering, 16"  
O.C. MAX



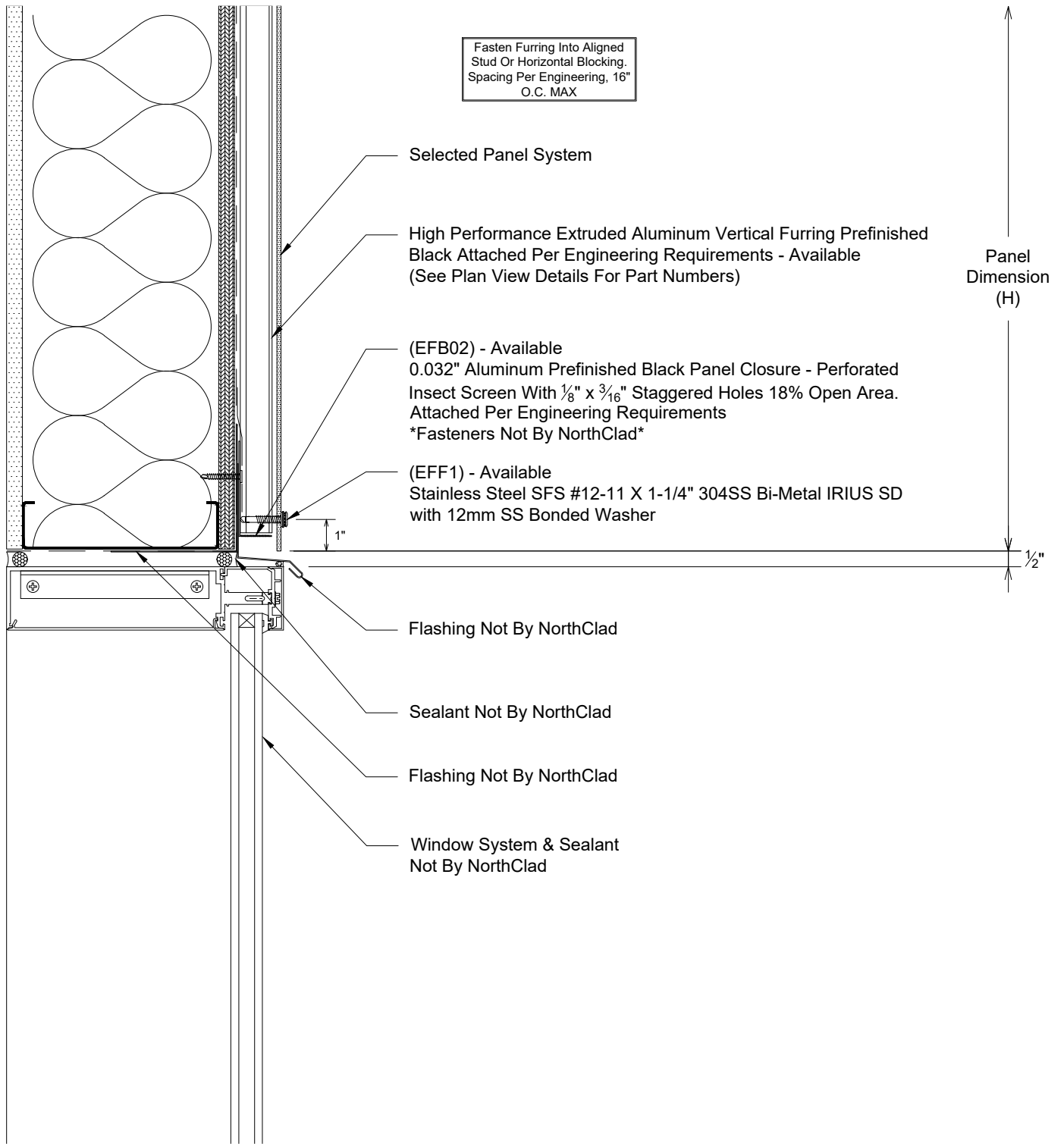
H

Plan - NorthClad EF - Inside Corner  
System: NorthClad EF System



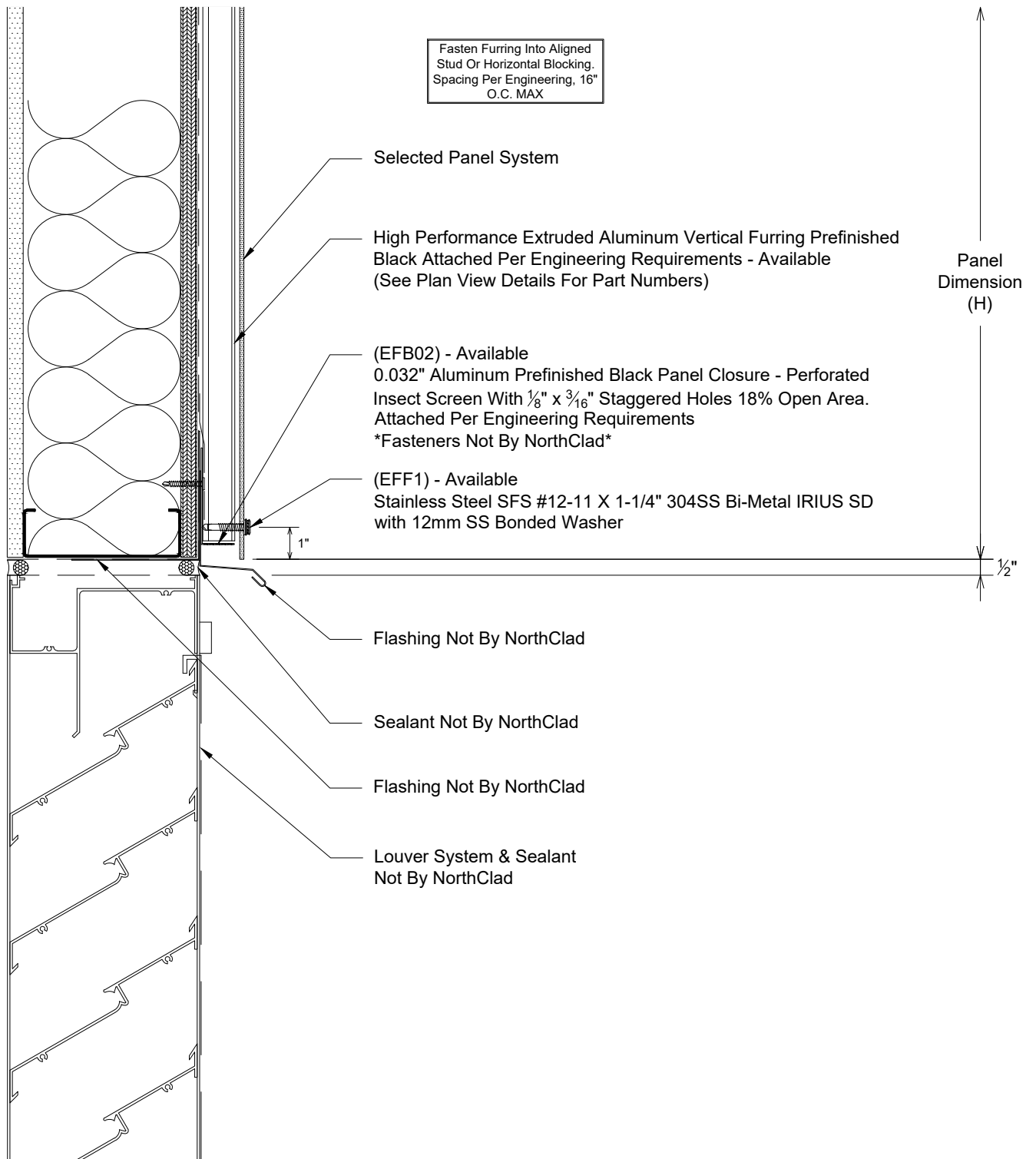
J1

Section - NorthClad EF - Framed Opening Door Header  
System: NorthClad EF System



**J2**

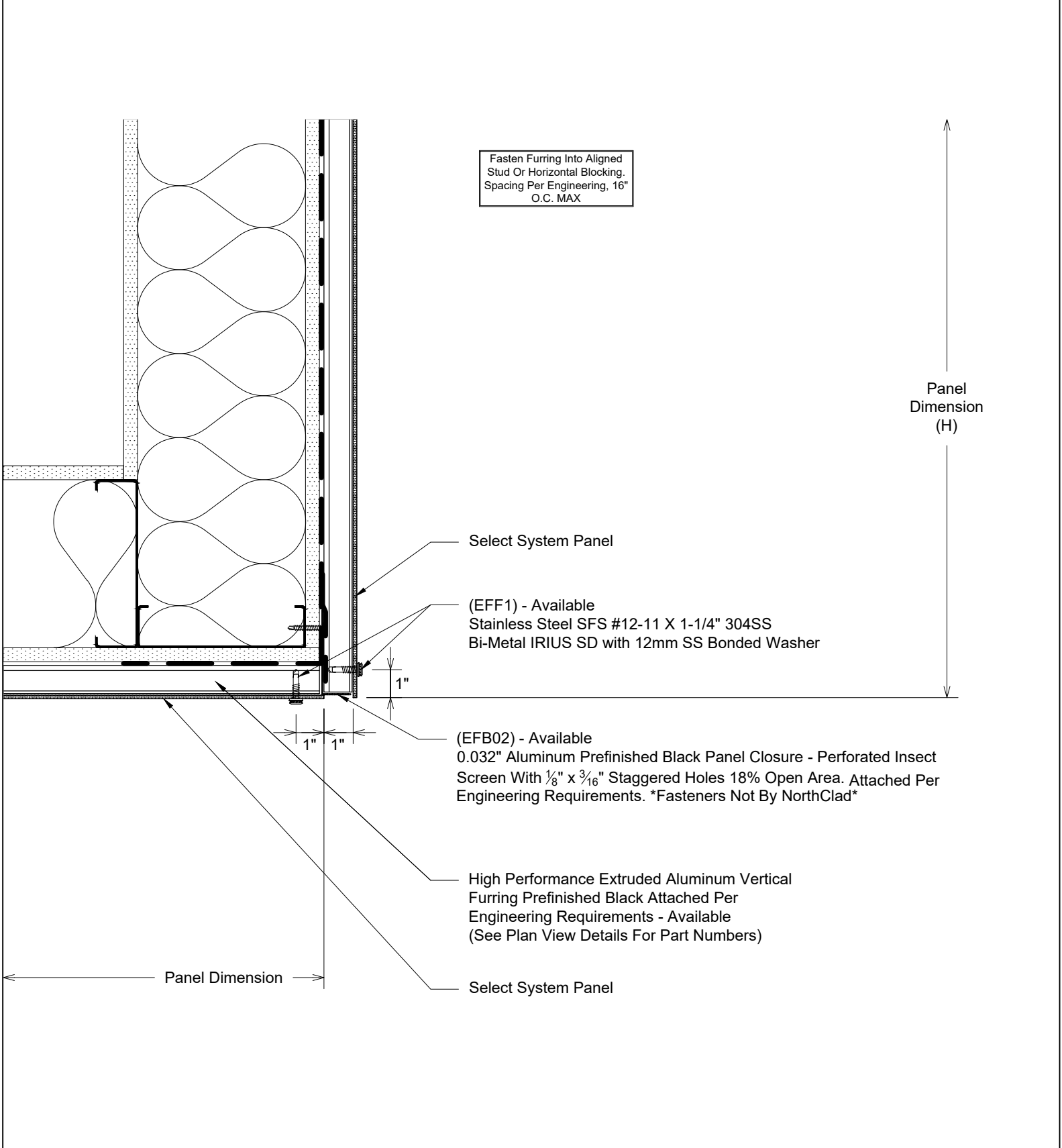
Section - NorthClad EF - Framed Opening Window Header  
System: NorthClad EF System



J3

Section - NorthClad EF - Framed Opening Louver Header

System: NorthClad EF System



Fasten Furring Into Aligned Stud Or Horizontal Blocking. Spacing Per Engineering, 16" O.C. MAX

Panel Dimension (H)

Select System Panel

(EFF1) - Available  
Stainless Steel SFS #12-11 X 1-1/4" 304SS  
Bi-Metal IRIUS SD with 12mm SS Bonded Washer

(EFB02) - Available  
0.032" Aluminum Prefinished Black Panel Closure - Perforated Insect Screen With 1/8" x 3/16" Staggered Holes 18% Open Area. Attached Per Engineering Requirements. \*Fasteners Not By NorthClad\*

High Performance Extruded Aluminum Vertical Furring Prefinished Black Attached Per Engineering Requirements - Available (See Plan View Details For Part Numbers)

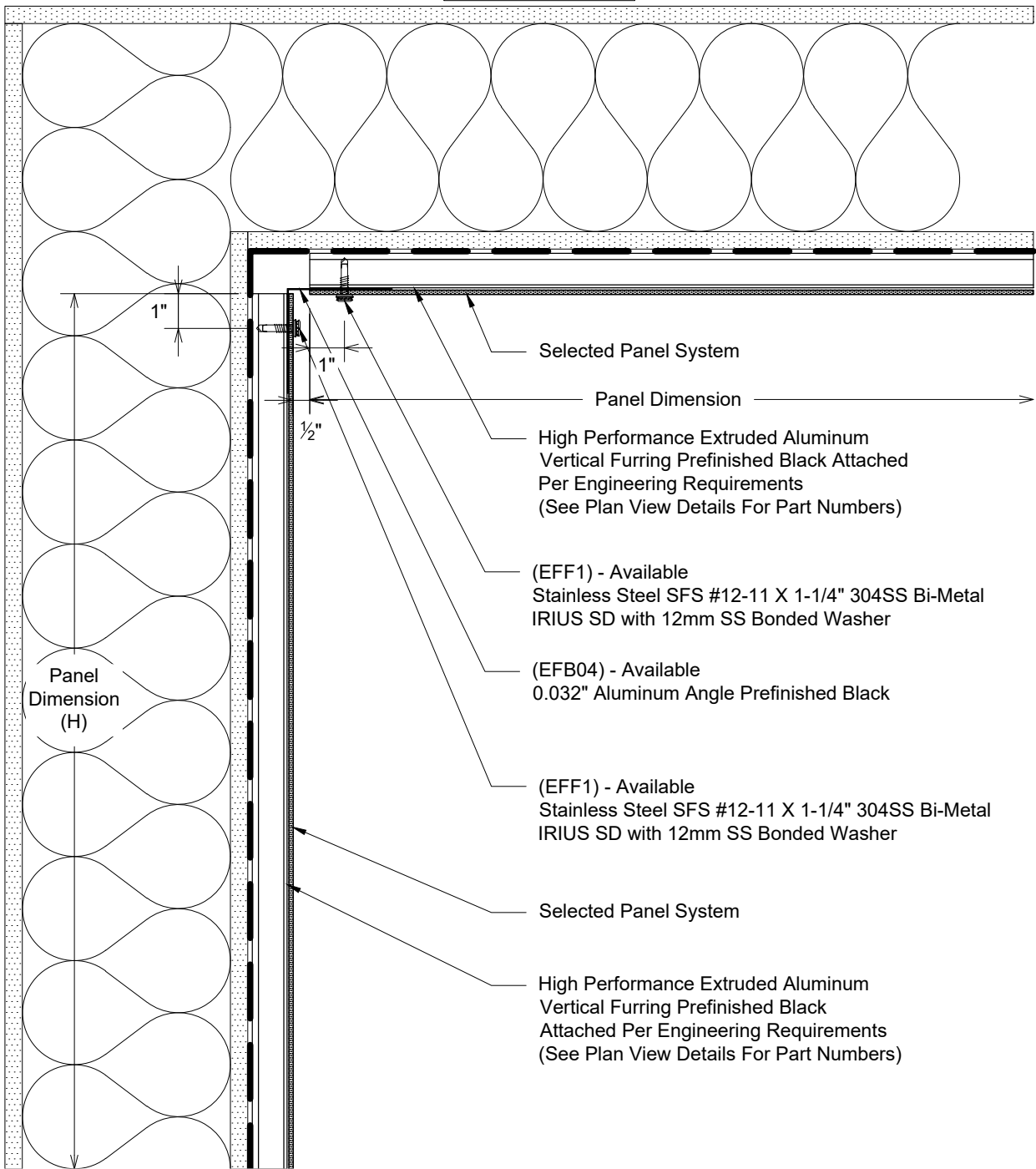
Select System Panel

Panel Dimension

K

Section - NorthClad EF - Fascia to Soffit  
System: NorthClad EF System

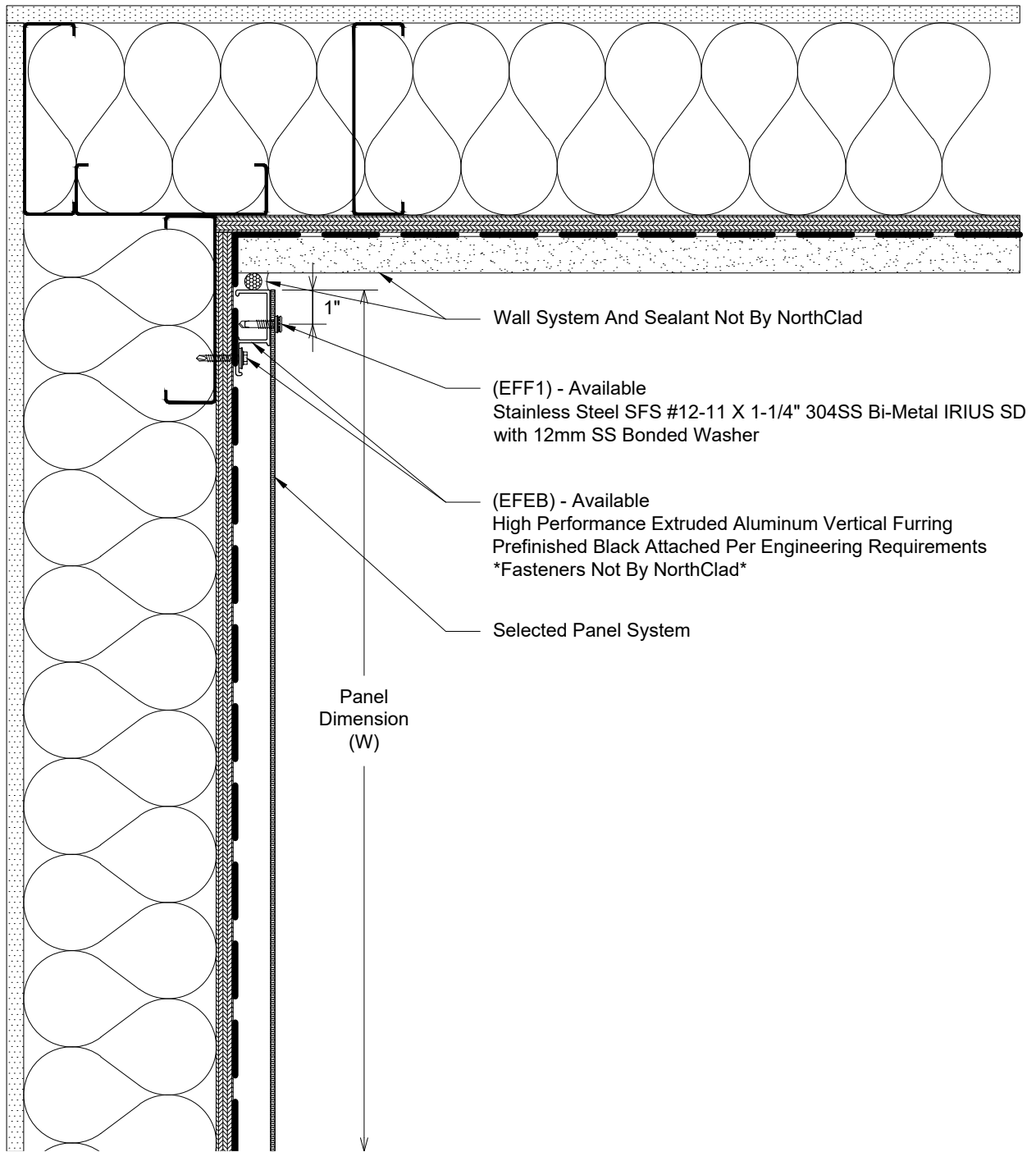
Fasten Furring Into Aligned Stud Or Horizontal Blocking. Spacing Per Engineering, 16" O.C. MAX



L

Section - NorthClad EF - Wall to Soffit w/Vent  
System: NorthClad EF System

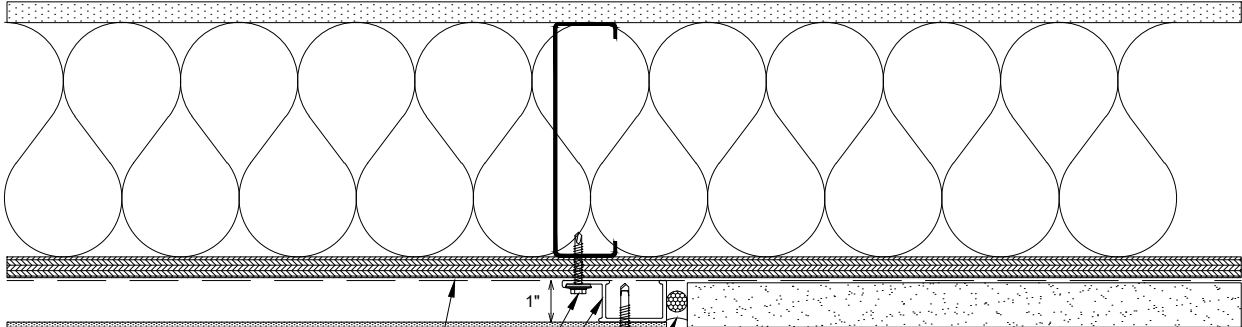
Fasten Furring Into Aligned Stud Or Horizontal Blocking. Spacing Per Engineering, 16" O.C. MAX



M

Plan - NorthClad EF - Inside Corner Termination  
System: NorthClad EF System

Fasten Furring Into Aligned Stud Or Horizontal Blocking.  
Spacing Per Engineering, 16"  
O.C. MAX



WRB & WRB Design/Detailing  
Not By NorthClad

Selected Panel System See

(EFEB) - Available

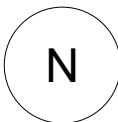
High Performance Extruded Aluminum Vertical Furring  
Prefinished Black Attached Per Engineering Requirements  
\*Fasteners Not By NorthClad\*

(EFF1) - Available

Stainless Steel SFS #12-11 X 1-1/4" 304SS  
Bi-Metal IRIUS SD with 12mm SS Bonded Washer

Wall System And Sealant  
Not By NorthClad

← Panel Dimension (W) →

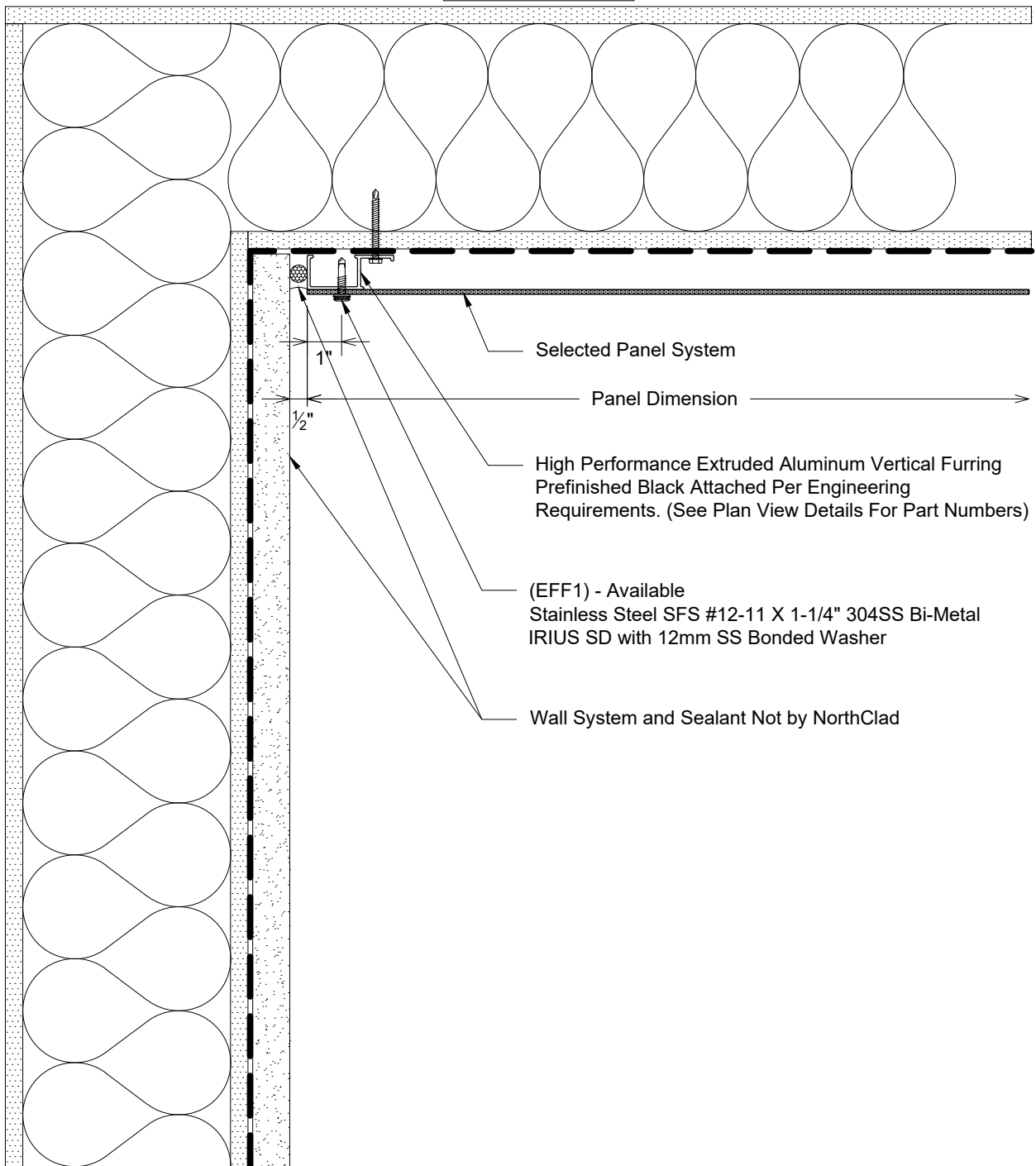


Plan - NorthClad EF - Termination to Adjacent Materials

System: NorthClad EF System

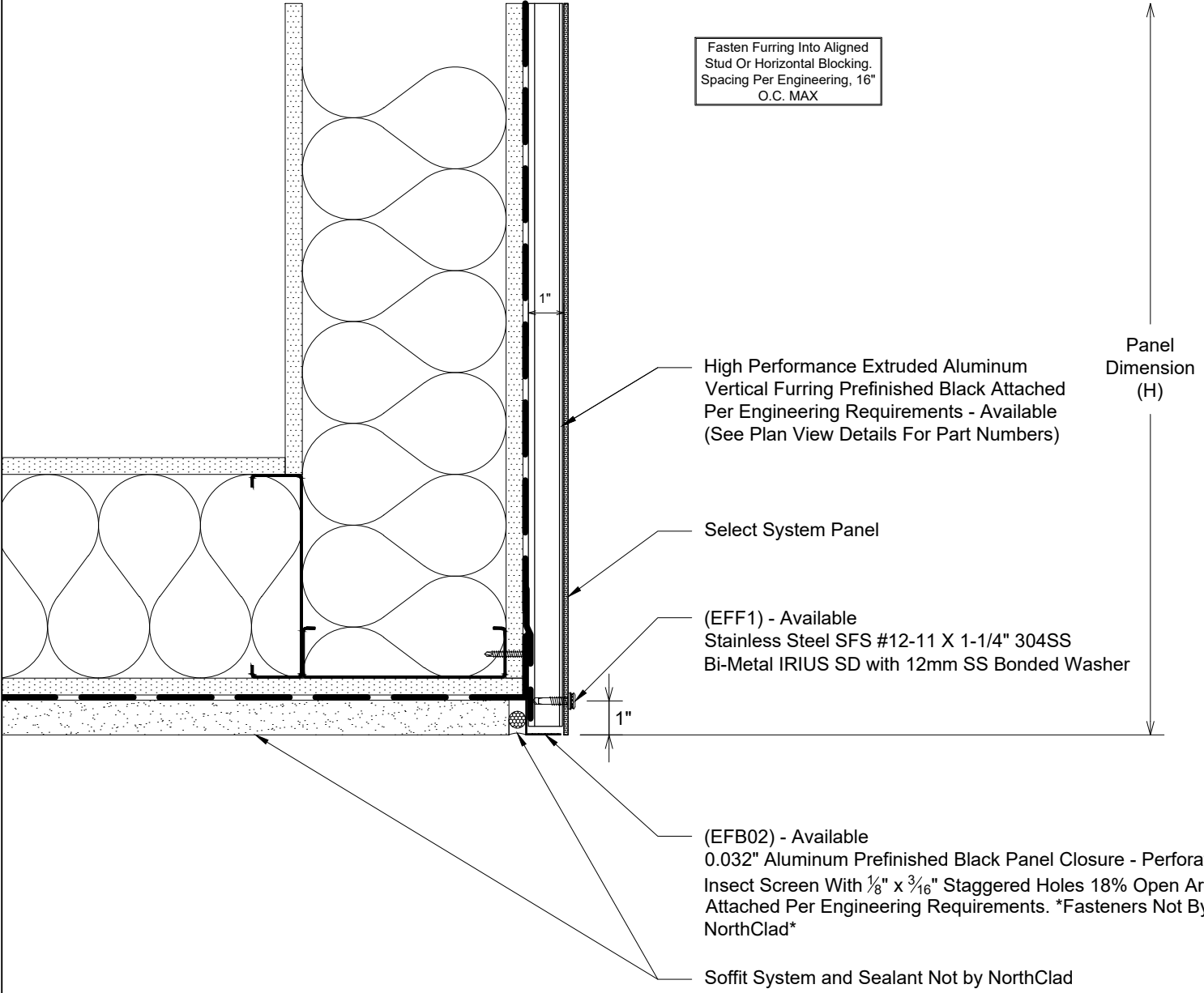


Fasten Furring Into Aligned  
Stud Or Horizontal Blocking.  
Spacing Per Engineering, 16"  
O.C. MAX



P

Section - NorthClad EF - Soffit to Wall by Others  
System: NorthClad EF System



Fasten Furring Into Aligned Stud Or Horizontal Blocking. Spacing Per Engineering, 16" O.C. MAX

Panel Dimension (H)

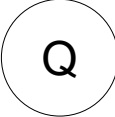
High Performance Extruded Aluminum Vertical Furring Prefinished Black Attached Per Engineering Requirements - Available (See Plan View Details For Part Numbers)

Select System Panel

(EFF1) - Available  
Stainless Steel SFS #12-11 X 1-1/4" 304SS  
Bi-Metal IRIUS SD with 12mm SS Bonded Washer

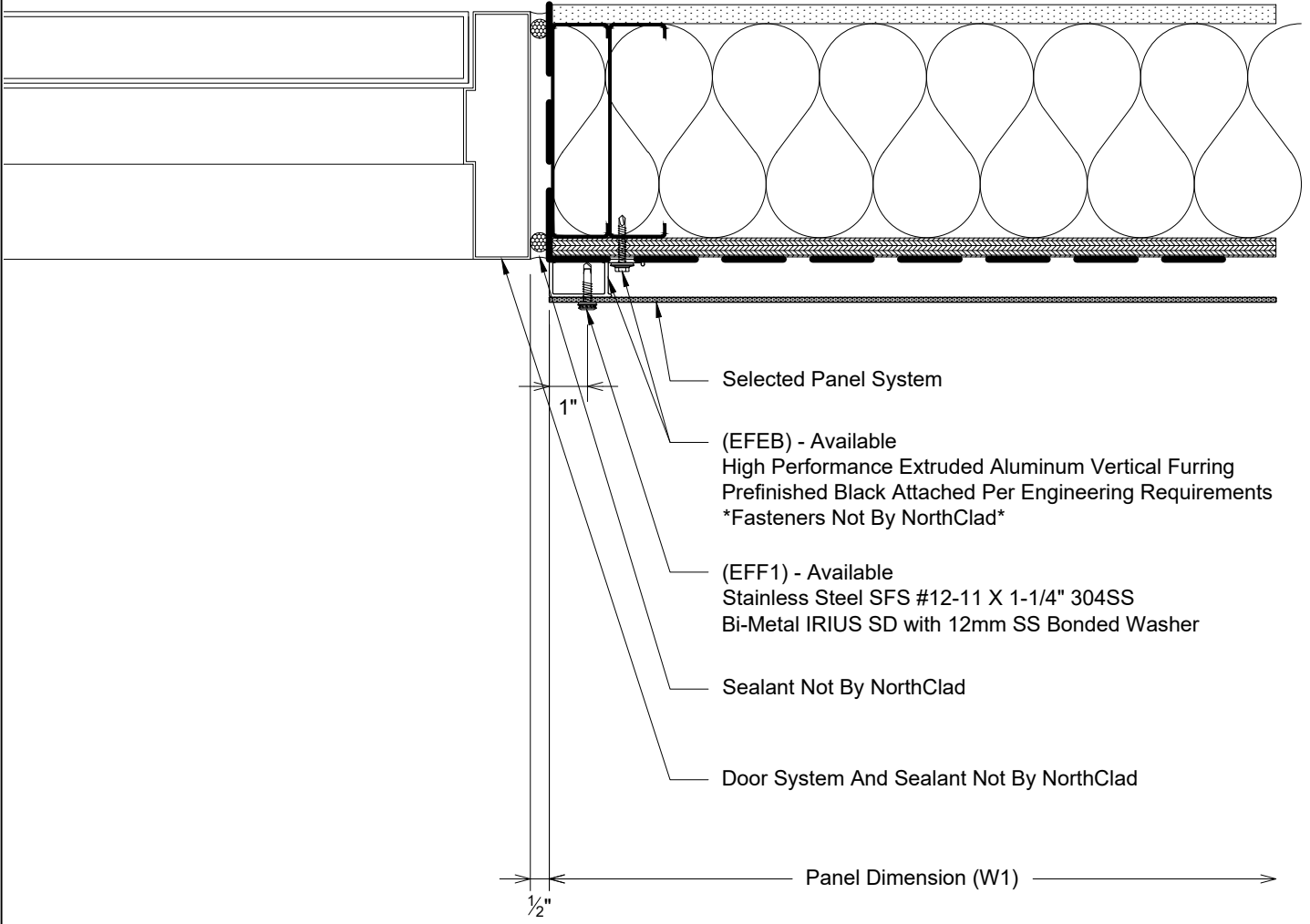
(EFB02) - Available  
0.032" Aluminum Prefinished Black Panel Closure - Perforated Insect Screen With 1/8" x 3/16" Staggered Holes 18% Open Area. Attached Per Engineering Requirements. \*Fasteners Not By NorthClad\*

Soffit System and Sealant Not by NorthClad



Section - NorthClad EF - Fascia to Soffit by Others  
System: NorthClad EF System

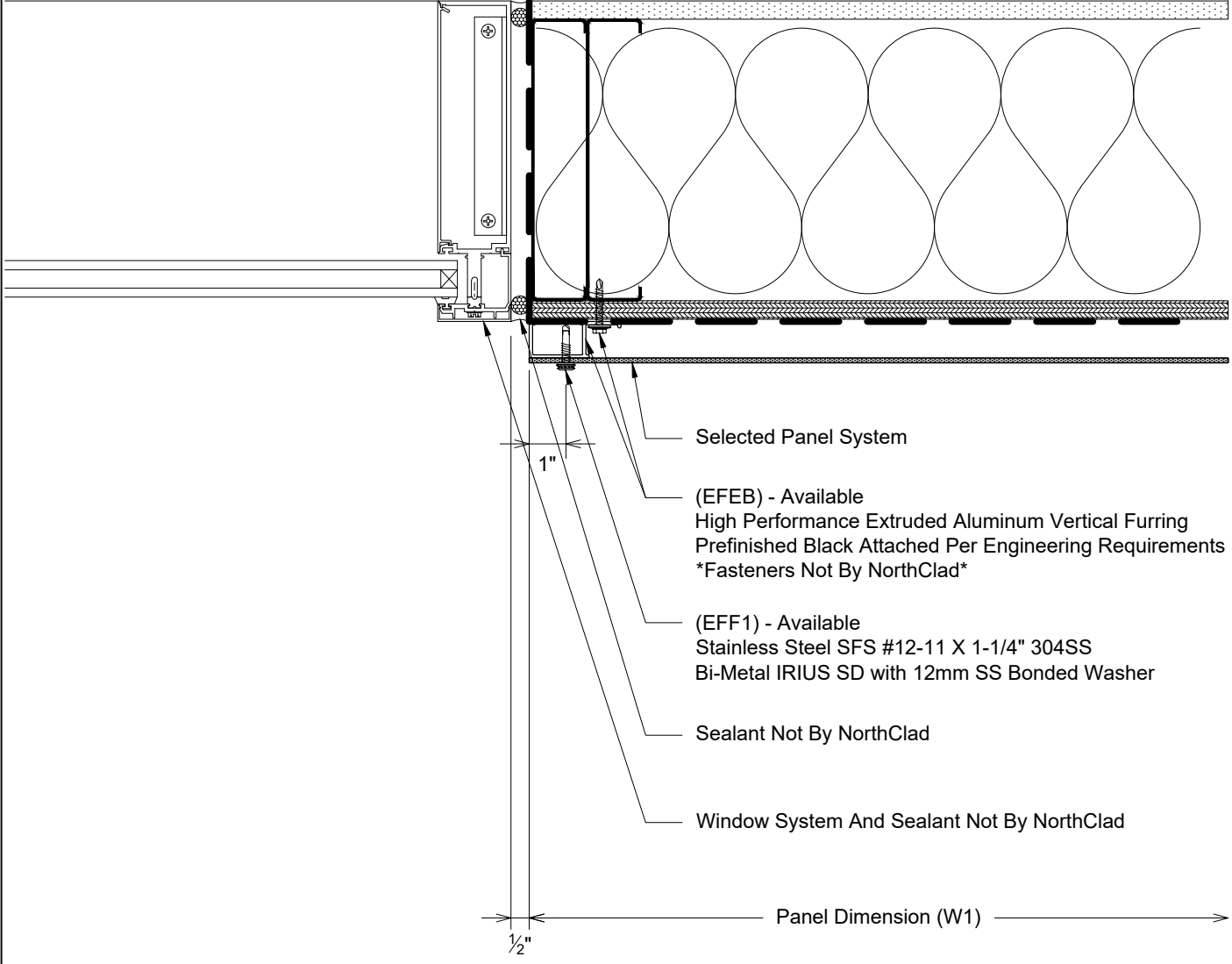
Fasten Furring Into Aligned Stud Or Horizontal Blocking. Spacing Per Engineering, 16" O.C. MAX



R1

Plan - NorthClad EF - Framed Opening Door Jamb  
System: NorthClad EF System

Fasten Furring Into Aligned Stud Or Horizontal Blocking.  
Spacing Per Engineering, 16"  
O.C. MAX



Selected Panel System

(EFEB) - Available  
High Performance Extruded Aluminum Vertical Furring  
Prefinished Black Attached Per Engineering Requirements  
\*Fasteners Not By NorthClad\*

(EFF1) - Available  
Stainless Steel SFS #12-11 X 1-1/4" 304SS  
Bi-Metal IRIUS SD with 12mm SS Bonded Washer

Sealant Not By NorthClad

Window System And Sealant Not By NorthClad

Panel Dimension (W1)

1/2"

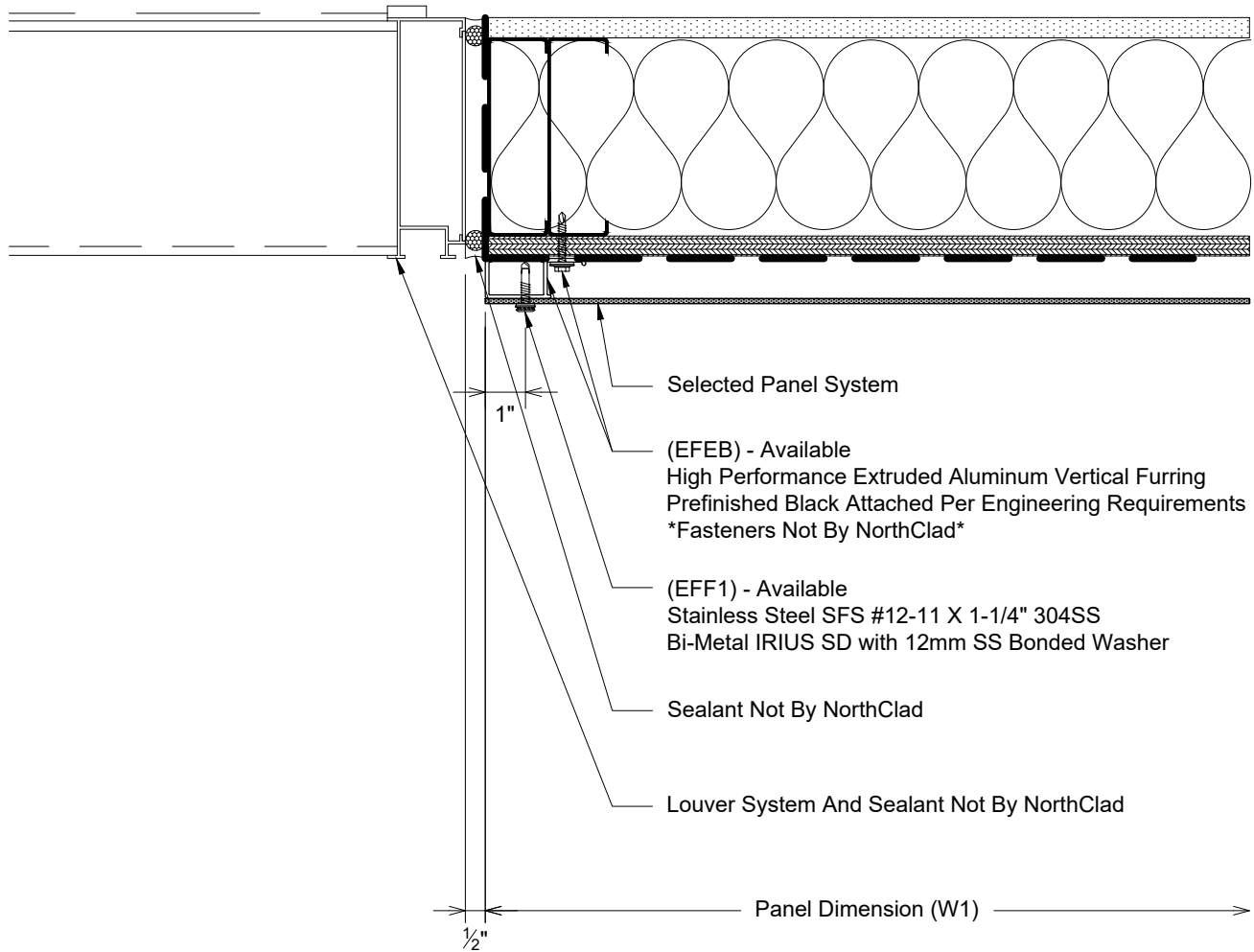
1"

R2

Plan - NorthClad EF - Framed Opening Window Jamb

System: NorthClad EF System

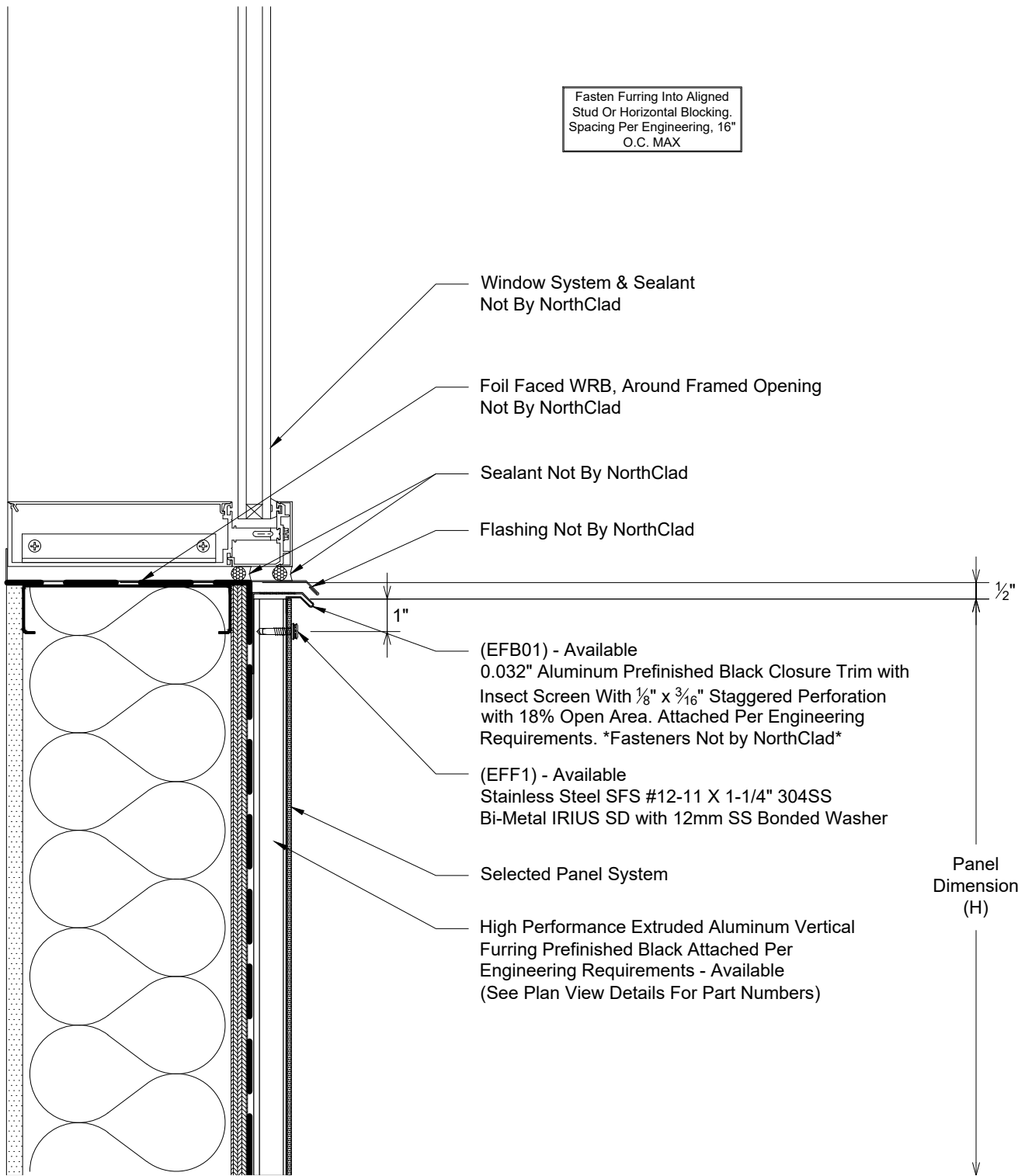
Fasten Furring Into Aligned Stud Or Horizontal Blocking.  
Spacing Per Engineering, 16"  
O.C. MAX



R3

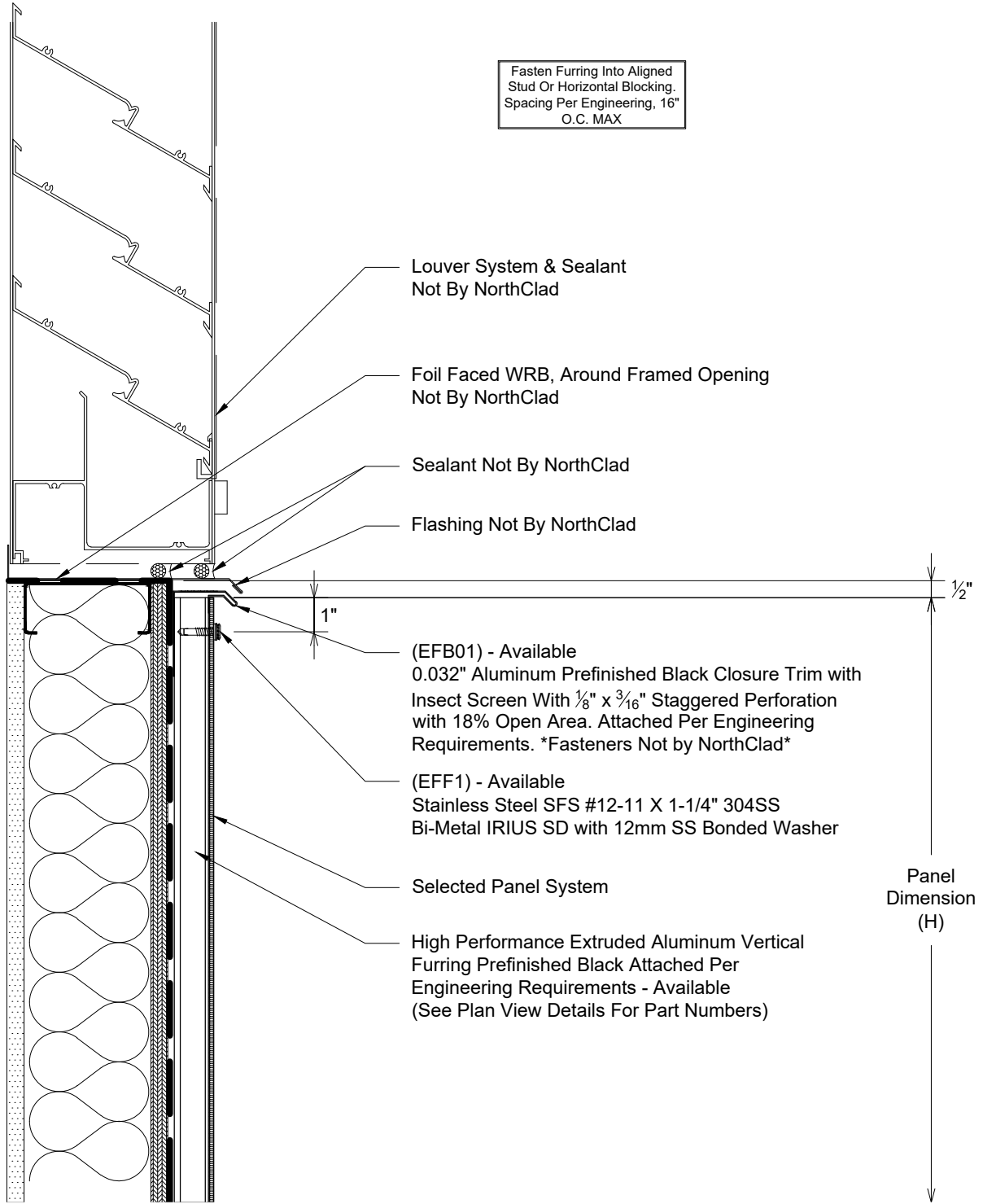
Plan - NorthClad EF - Framed Opening Louver Jamb

System: NorthClad EF System



S1

Section - NorthClad EF - Framed Opening Window Sill  
System: NorthClad EF System



Fasten Furring Into Aligned Stud Or Horizontal Blocking. Spacing Per Engineering, 16" O.C. MAX

Louver System & Sealant  
Not By NorthClad

Foil Faced WRB, Around Framed Opening  
Not By NorthClad

Sealant Not By NorthClad

Flashing Not By NorthClad

(EFB01) - Available  
0.032" Aluminum Prefinished Black Closure Trim with Insect Screen With 1/8" x 3/16" Staggered Perforation with 18% Open Area. Attached Per Engineering Requirements. \*Fasteners Not by NorthClad\*

(EFF1) - Available  
Stainless Steel SFS #12-11 X 1-1/4" 304SS Bi-Metal IRIUS SD with 12mm SS Bonded Washer

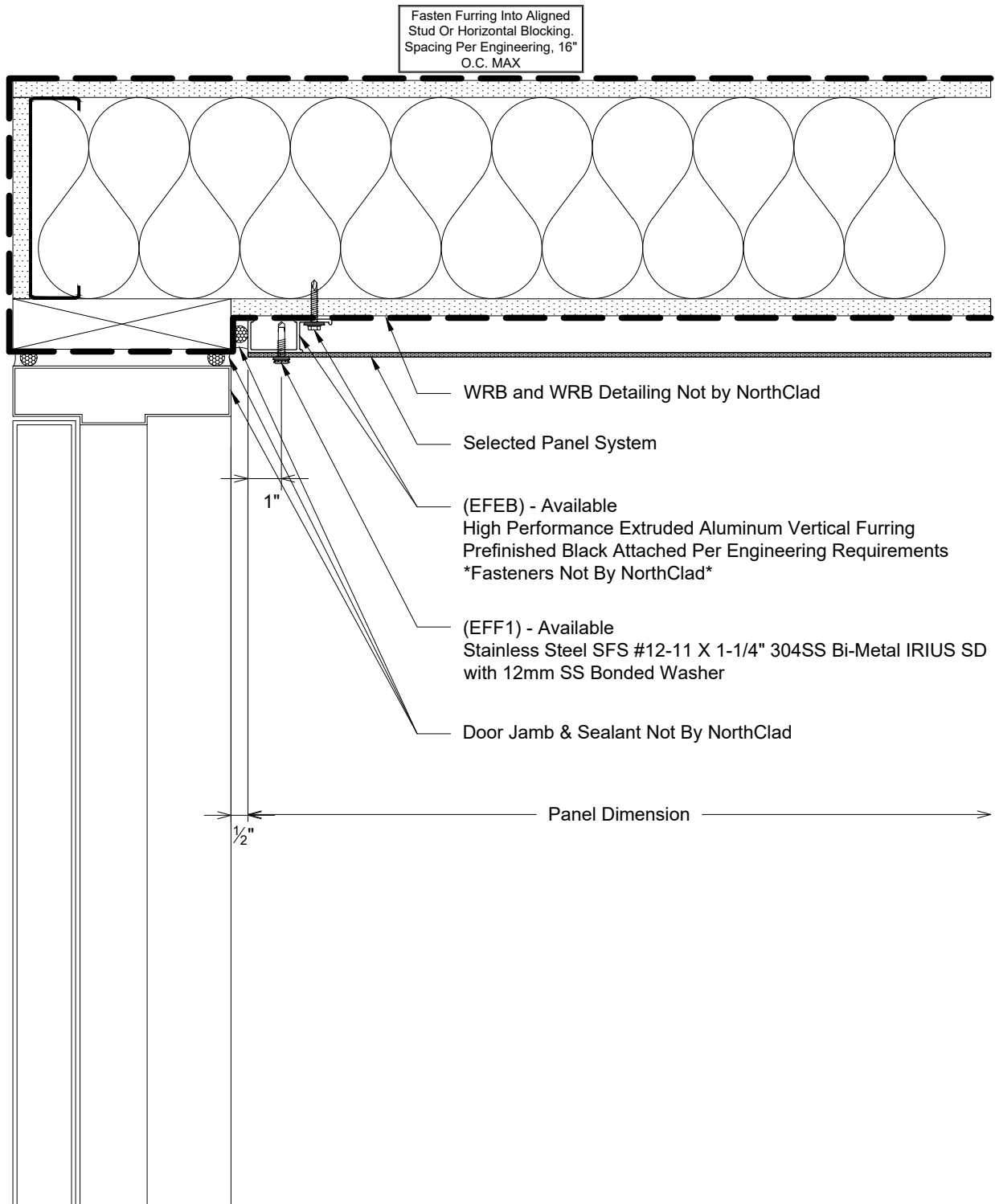
Selected Panel System

High Performance Extruded Aluminum Vertical Furring Prefinished Black Attached Per Engineering Requirements - Available (See Plan View Details For Part Numbers)

1/2"  
Panel Dimension (H)

S2

Section - NorthClad EF - Framed Opening Louver Sill  
System: NorthClad EF System



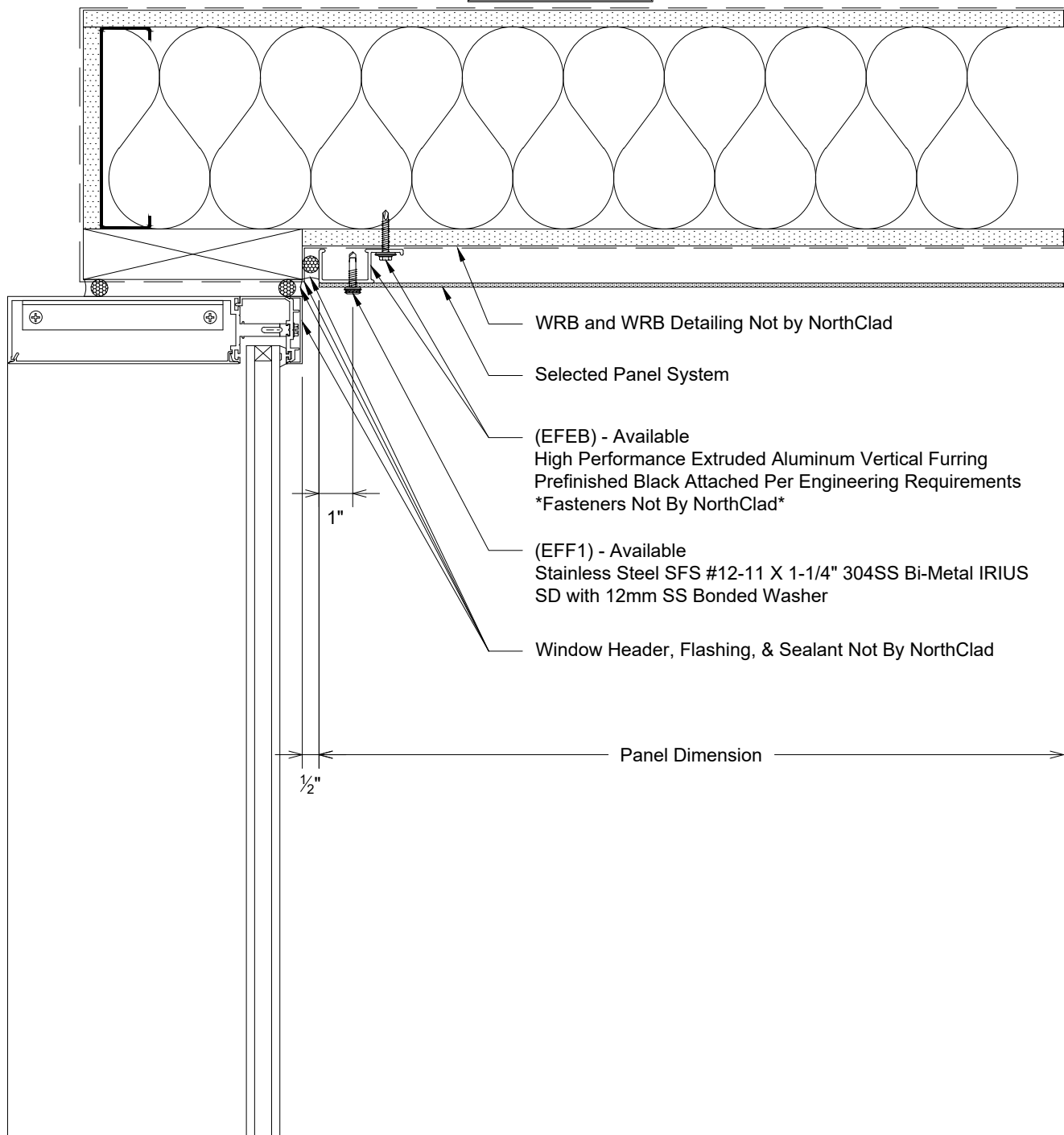
T

Plan - NorthClad EF - Inside Corner to Jamb

System: NorthClad EF System



Fasten Furring Into Aligned Stud Or Horizontal Blocking. Spacing Per Engineering, 16" O.C. MAX



WRB and WRB Detailing Not by NorthClad

Selected Panel System

(EFEB) - Available  
High Performance Extruded Aluminum Vertical Furring  
Prefinished Black Attached Per Engineering Requirements  
\*Fasteners Not By NorthClad\*

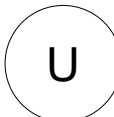
(EFF1) - Available  
Stainless Steel SFS #12-11 X 1-1/4" 304SS Bi-Metal IRIUS  
SD with 12mm SS Bonded Washer

Window Header, Flashing, & Sealant Not By NorthClad

Panel Dimension

1"

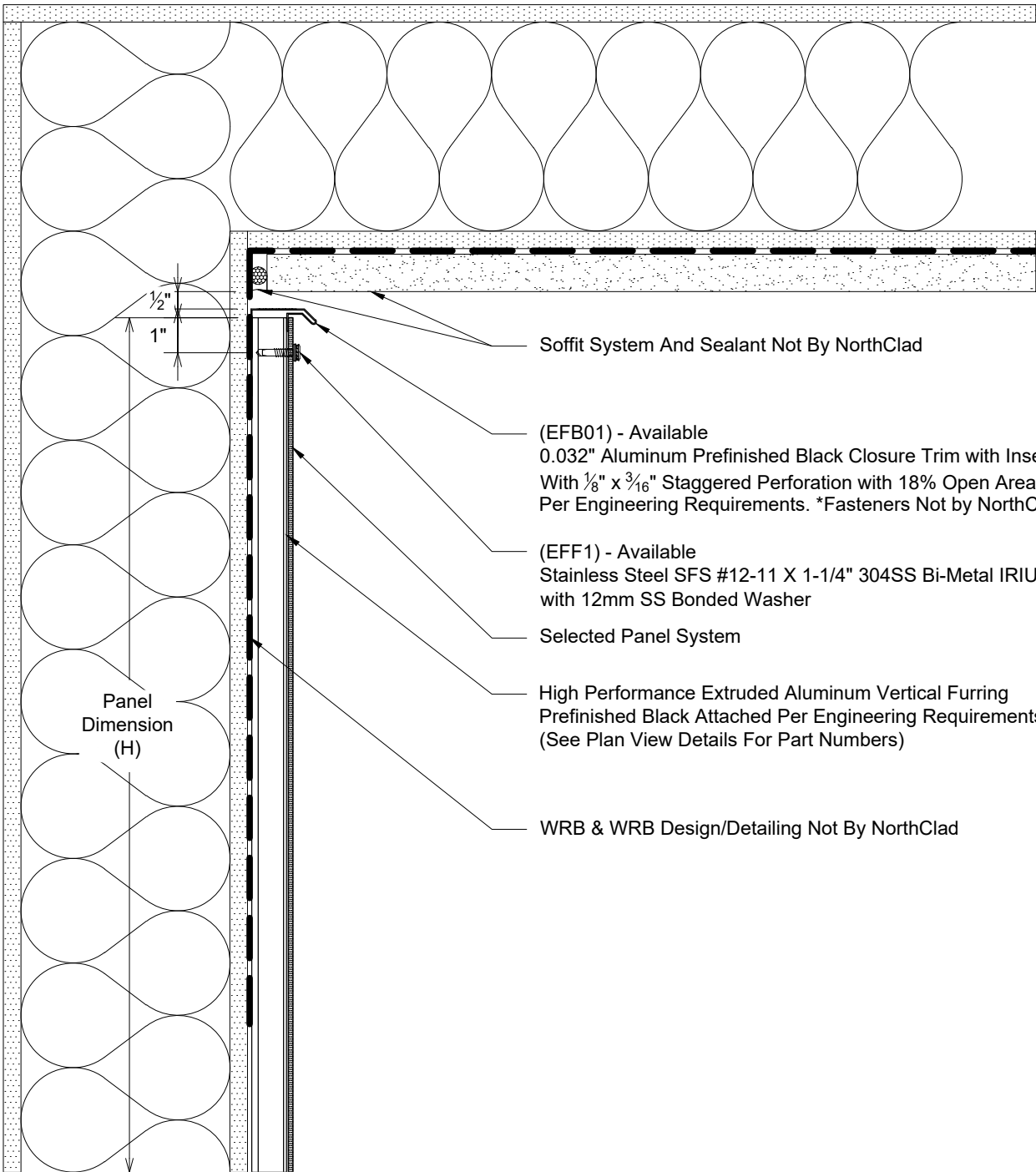
1/2"



Section - NorthClad EF - Soffit to Window Header

System: NorthClad EF System

Fasten Furring Into Aligned Stud Or Horizontal Blocking. Spacing Per Engineering, 16" O.C. MAX



Soffit System And Sealant Not By NorthClad

(EFB01) - Available  
0.032" Aluminum Prefinished Black Closure Trim with Insect Screen With  $\frac{1}{8}$ " x  $\frac{3}{16}$ " Staggered Perforation with 18% Open Area. Attached Per Engineering Requirements. \*Fasteners Not by NorthClad\*

(EFF1) - Available  
Stainless Steel SFS #12-11 X 1-1/4" 304SS Bi-Metal IRIUS SD with 12mm SS Bonded Washer

Selected Panel System

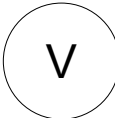
High Performance Extruded Aluminum Vertical Furring Prefinished Black Attached Per Engineering Requirements (See Plan View Details For Part Numbers)

WRB & WRB Design/Detailing Not By NorthClad

Panel Dimension (H)

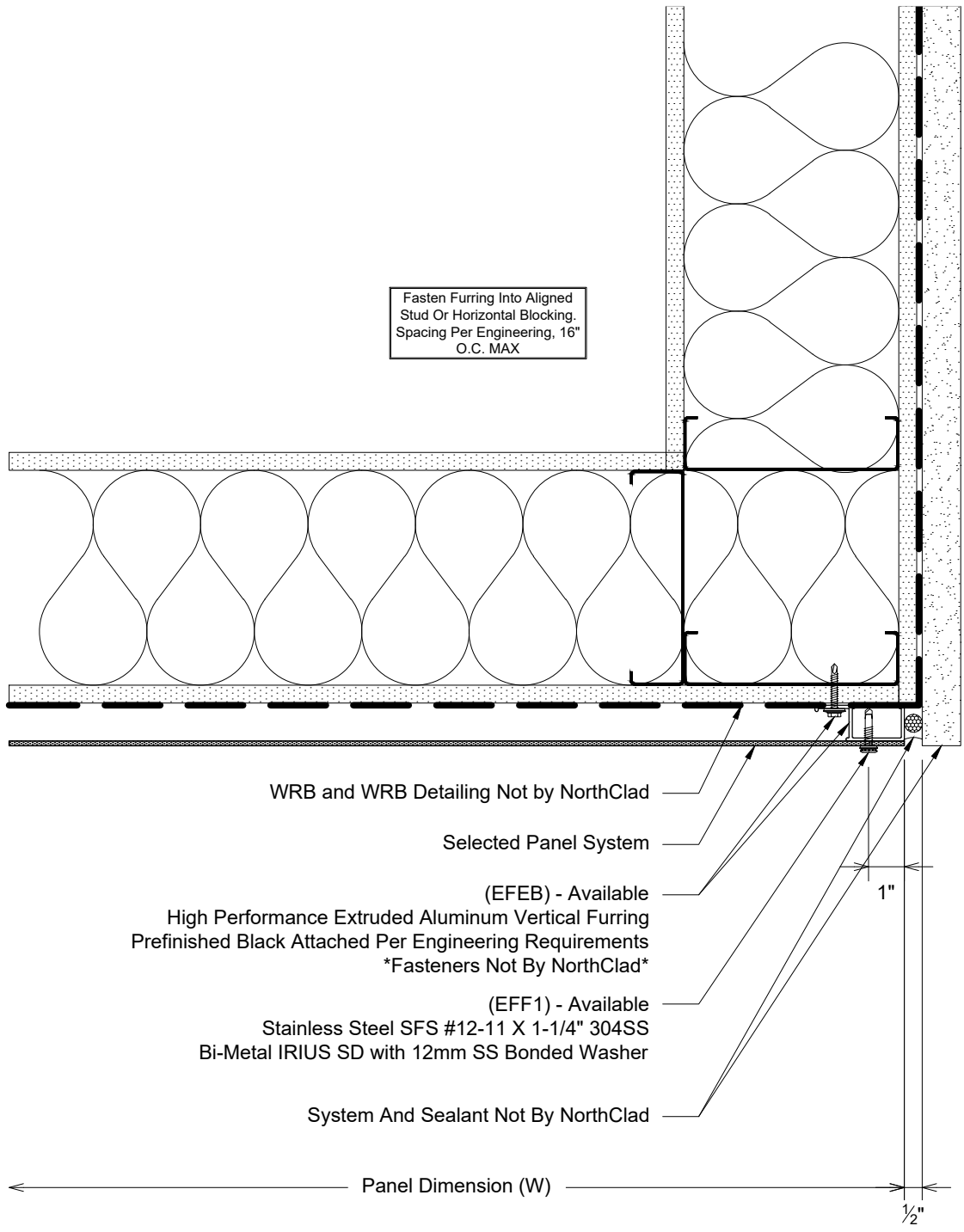
$\frac{1}{2}$ "

1"



Section - NorthClad EF - Wall to Soffit by Others

System: NorthClad EF System



W

Plan - NorthClad EF - Outside Corner to System by Others  
System: NorthClad EF System