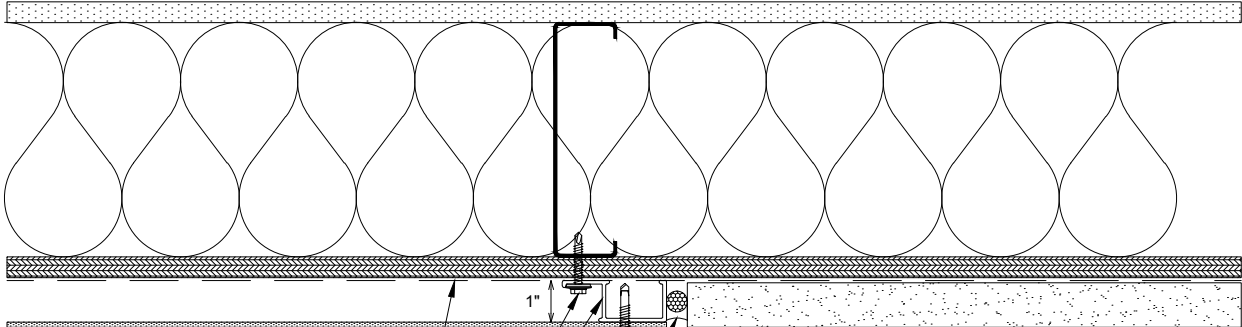


Fasten Furring Into Aligned Stud Or Horizontal Blocking.
Spacing Per Engineering, 16"
O.C. MAX



WRB & WRB Design/Detailing
Not By NorthClad

Selected Panel System See

(EFEB) - Available

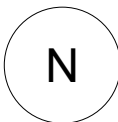
High Performance Extruded Aluminum Vertical Furring
Prefinished Black Attached Per Engineering Requirements
Fasteners Not By NorthClad

(EFF1) - Available

Stainless Steel SFS #12-11 X 1-1/4" 304SS
Bi-Metal IRIUS SD with 12mm SS Bonded Washer

Wall System And Sealant
Not By NorthClad

← Panel Dimension (W) →



Plan - NorthClad EF - Termination to Adjacent Materials

System: NorthClad EF System