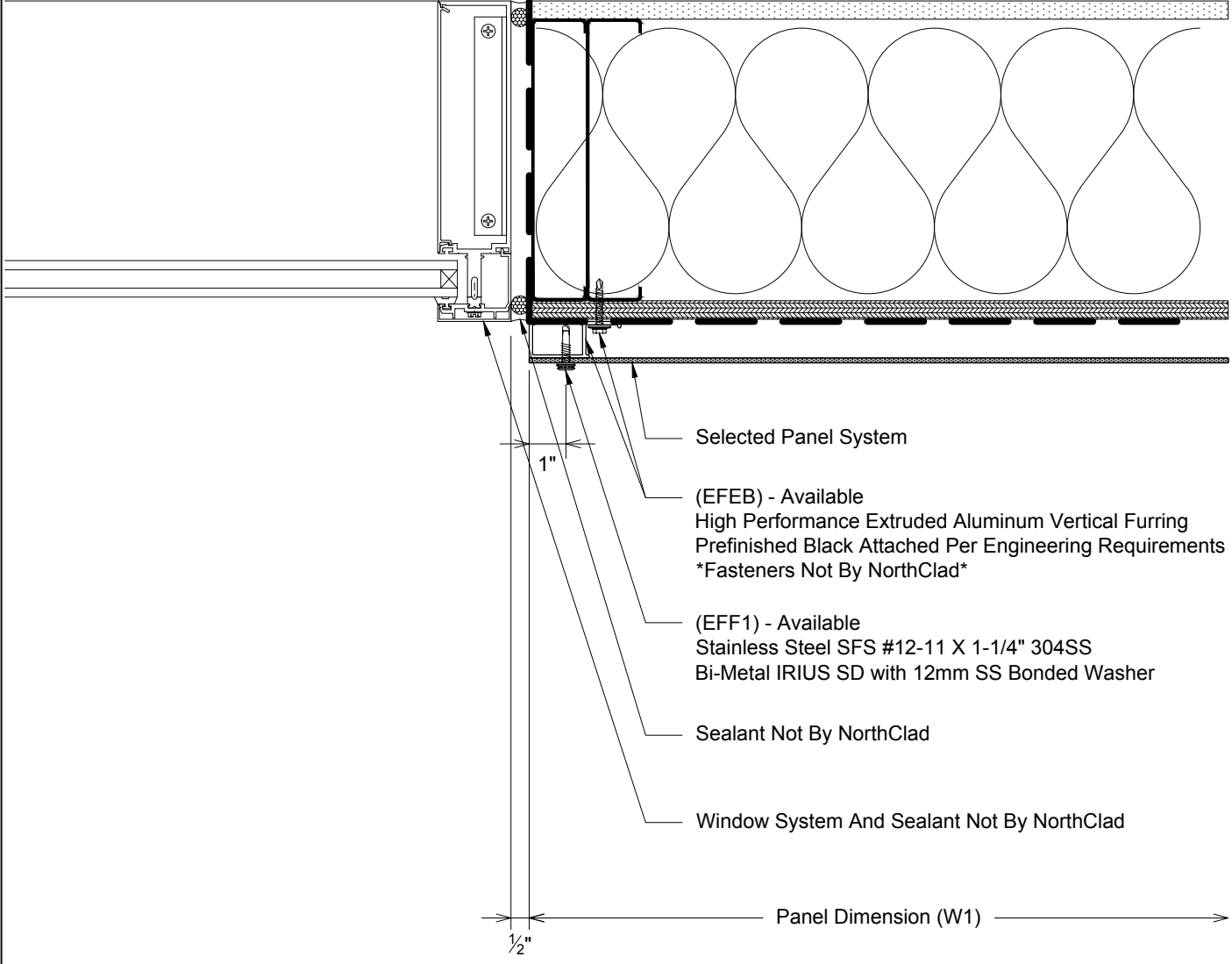


Fasten Furring Into Aligned Stud Or Horizontal Blocking.
Spacing Per Engineering, 16"
O.C. MAX



Selected Panel System

(EFEB) - Available
High Performance Extruded Aluminum Vertical Furring
Prefinished Black Attached Per Engineering Requirements
Fasteners Not By NorthClad

(EFF1) - Available
Stainless Steel SFS #12-11 X 1-1/4" 304SS
Bi-Metal IRIUS SD with 12mm SS Bonded Washer

Sealant Not By NorthClad

Window System And Sealant Not By NorthClad

Panel Dimension (W1)

R2

Plan - NorthClad EF - Framed Opening Window Jamb

System: NorthClad EF System