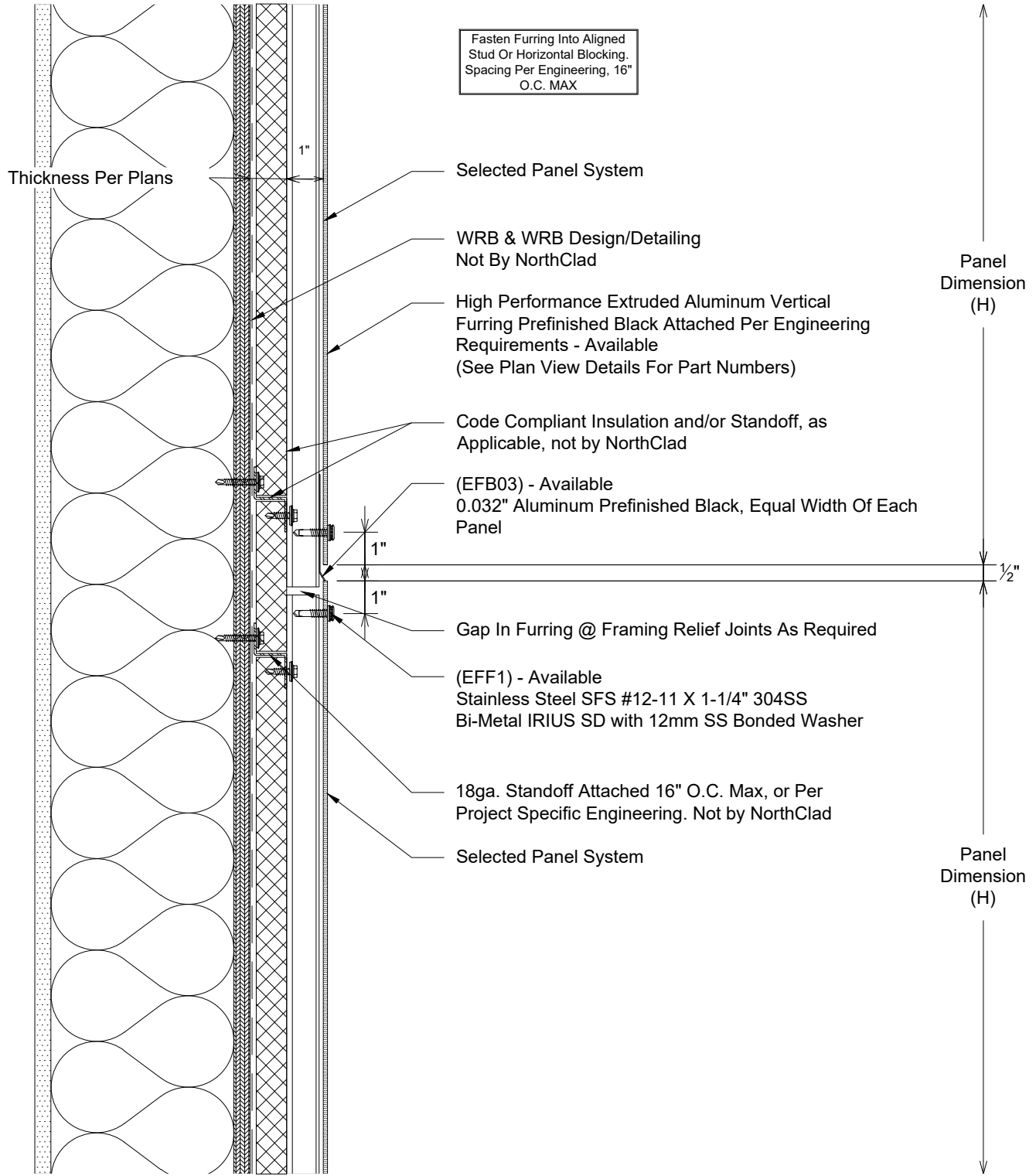


0

Isometric Key
System: NorthClad EF System



Fasten Furring Into Aligned Stud Or Horizontal Blocking. Spacing Per Engineering, 16" O.C. MAX

Thickness Per Plans

Selected Panel System

WRB & WRB Design/Detailing Not By NorthClad

High Performance Extruded Aluminum Vertical Furring Prefinished Black Attached Per Engineering Requirements - Available (See Plan View Details For Part Numbers)

Code Compliant Insulation and/or Standoff, as Applicable, not by NorthClad

(EFB03) - Available
0.032" Aluminum Prefinished Black, Equal Width Of Each Panel

Gap In Furring @ Framing Relief Joints As Required

(EFF1) - Available
Stainless Steel SFS #12-11 X 1-1/4" 304SS
Bi-Metal IRIUS SD with 12mm SS Bonded Washer

18ga. Standoff Attached 16" O.C. Max, or Per Project Specific Engineering. Not by NorthClad

Selected Panel System

Panel Dimension (H)

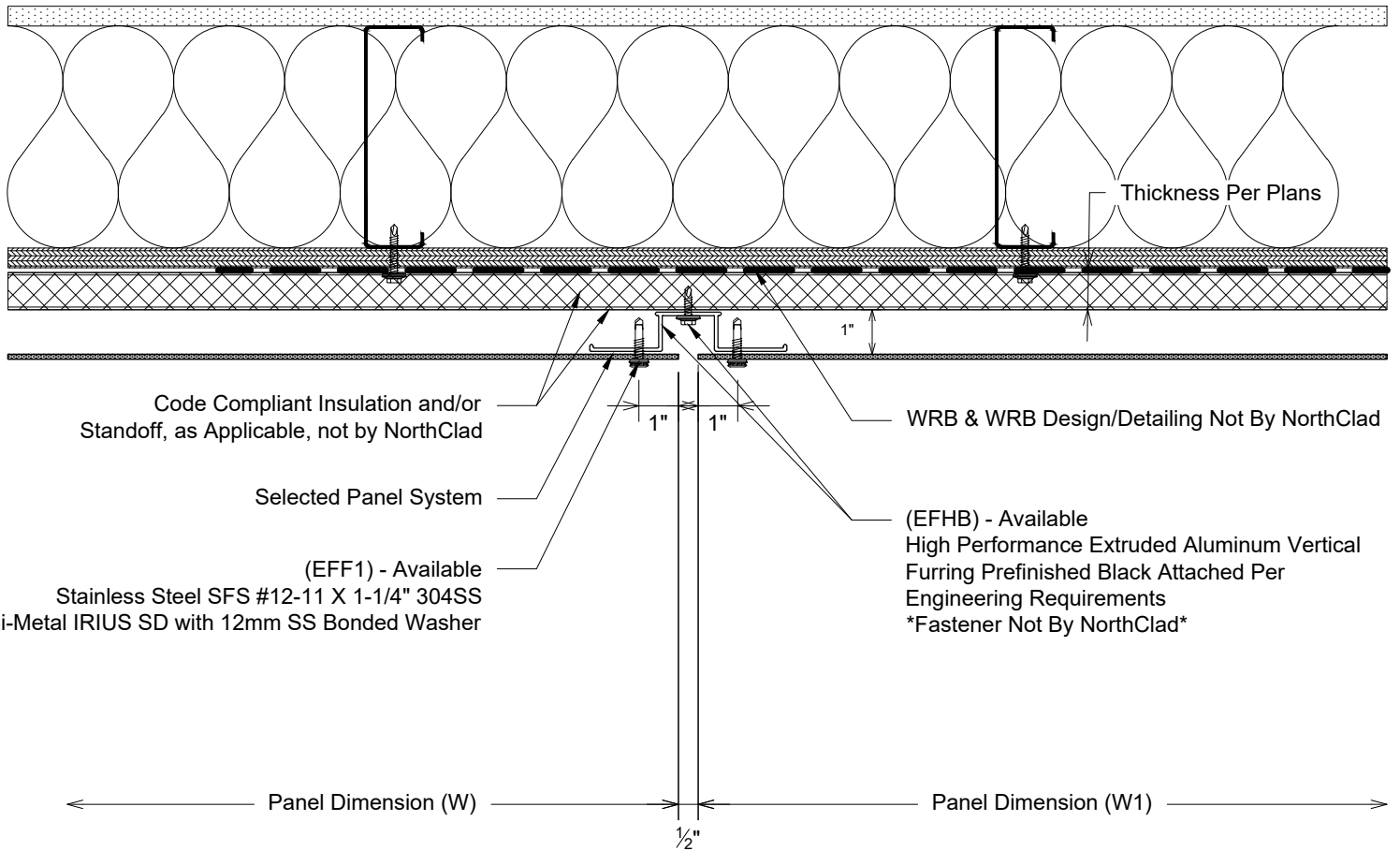
1/2"

Panel Dimension (H)

A

Section - Horizontal Joint
System: NorthClad EF System

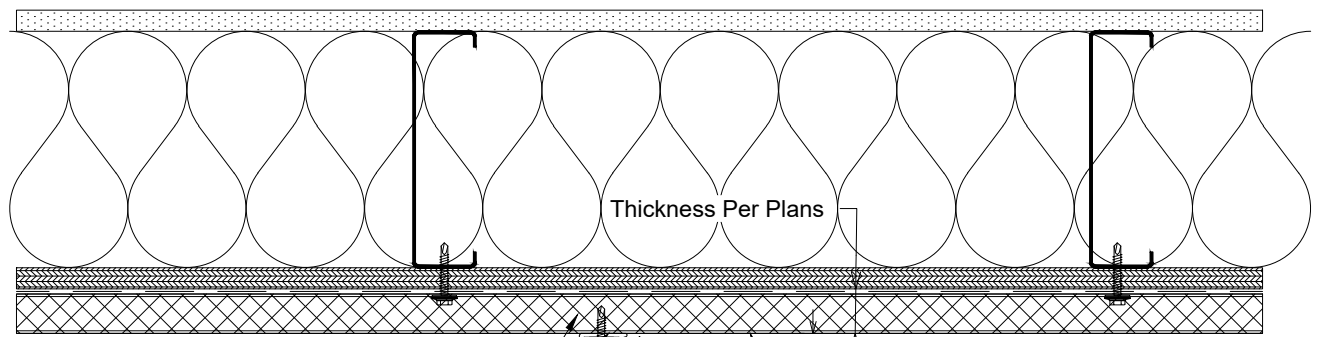
Fasten Furring Into Aligned Stud Or Horizontal Blocking. Spacing Per Engineering, 16" O.C. MAX



B

Plan - Vertical Joint
System: NorthClad EF System

Fasten Furring Into Aligned Stud Or Horizontal Blocking.
Spacing Per Engineering, 16"
O.C. MAX



Code Compliant Insulation and/or Standoff, as Applicable, not by NorthClad

(EFZB) - Available
High Performance Extruded Aluminum Vertical Furring Prefinished Black Attached Per Engineering Requirements. *Fastener Not By NorthClad*

WRB & WRB Design/Detailing Not By NorthClad

Selected Panel System

(EFF1) - Available
Stainless Steel SFS #12-11 X 1-1/4" 304SS
Bi-Metal IRIUS SD with 12mm SS Bonded Washer

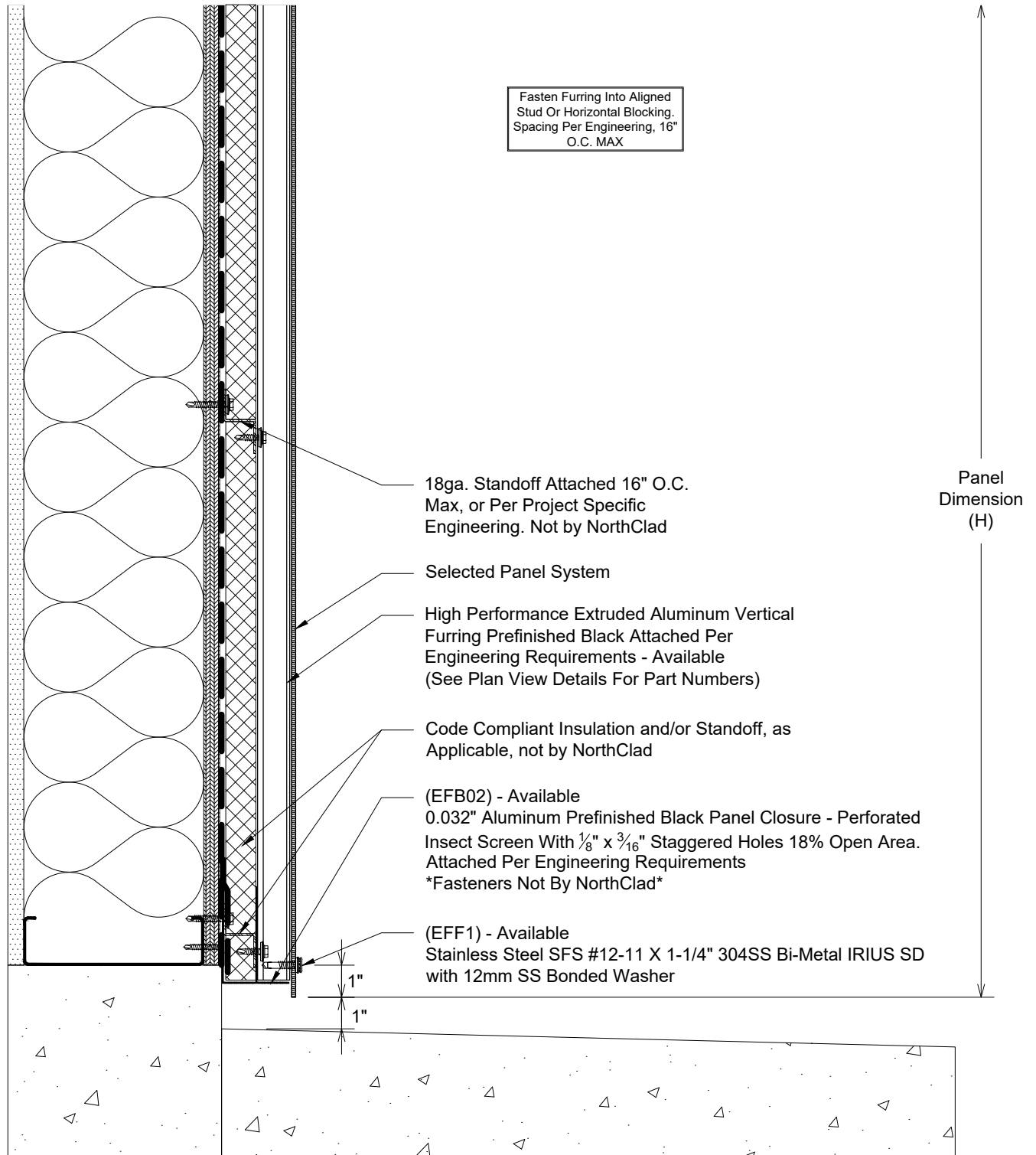
Fastener Dimension

Fastener Dimension

Panel Dimension

C

Plan - NorthClad EF - Vertical Fastener
System: NorthClad EF System

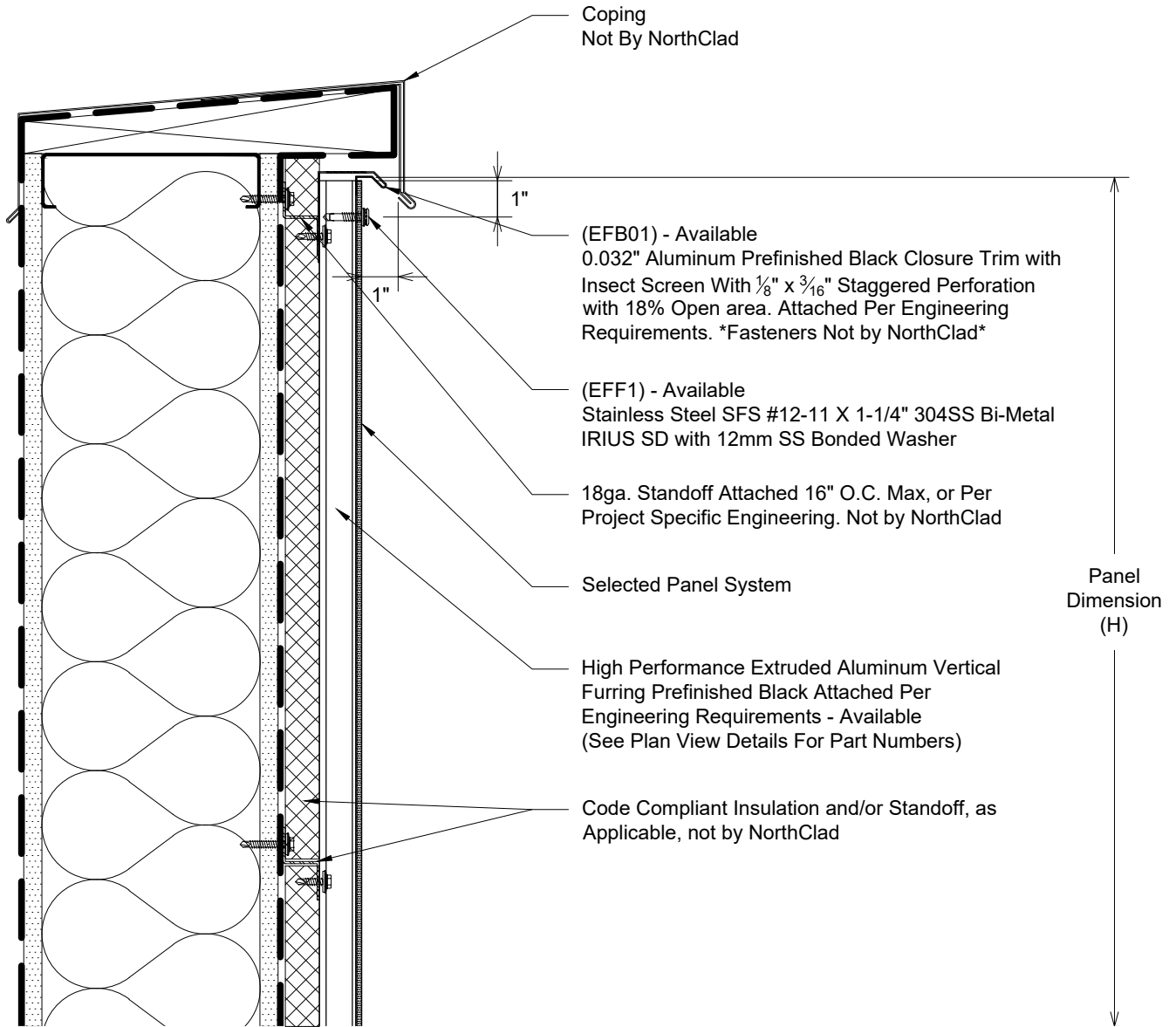


D

Section - NorthClad EF - Base of Wall

System: NorthClad EF System

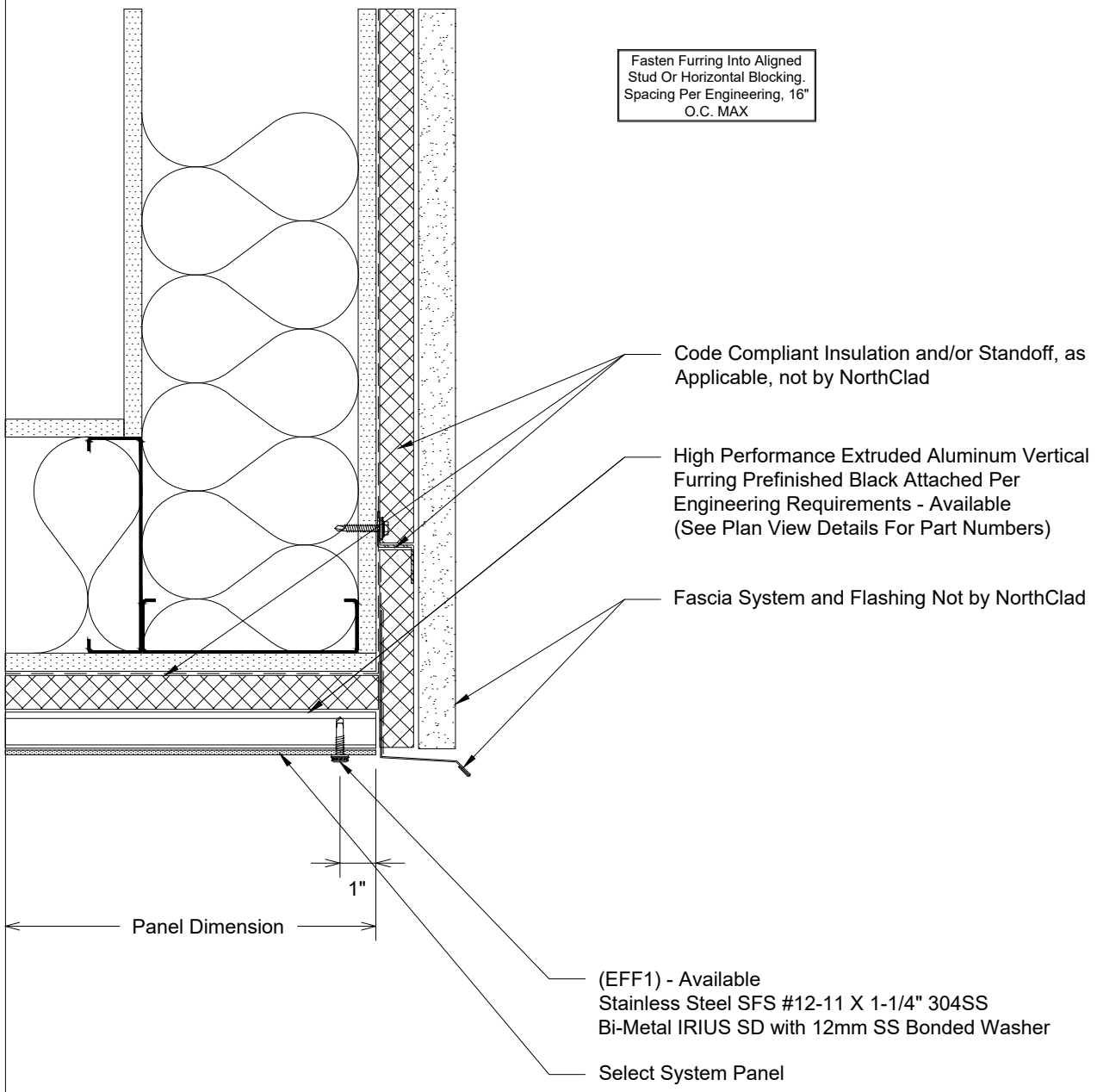
Fasten Furring Into Aligned Stud Or Horizontal Blocking. Spacing Per Engineering, 16" O.C. MAX



E

Section - NorthClad EF - Coping
System: NorthClad EF System

Fasten Furring Into Aligned Stud Or Horizontal Blocking, Spacing Per Engineering, 16" O.C. MAX



Code Compliant Insulation and/or Standoff, as Applicable, not by NorthClad

High Performance Extruded Aluminum Vertical Furring Prefinished Black Attached Per Engineering Requirements - Available (See Plan View Details For Part Numbers)

Fascia System and Flashing Not by NorthClad

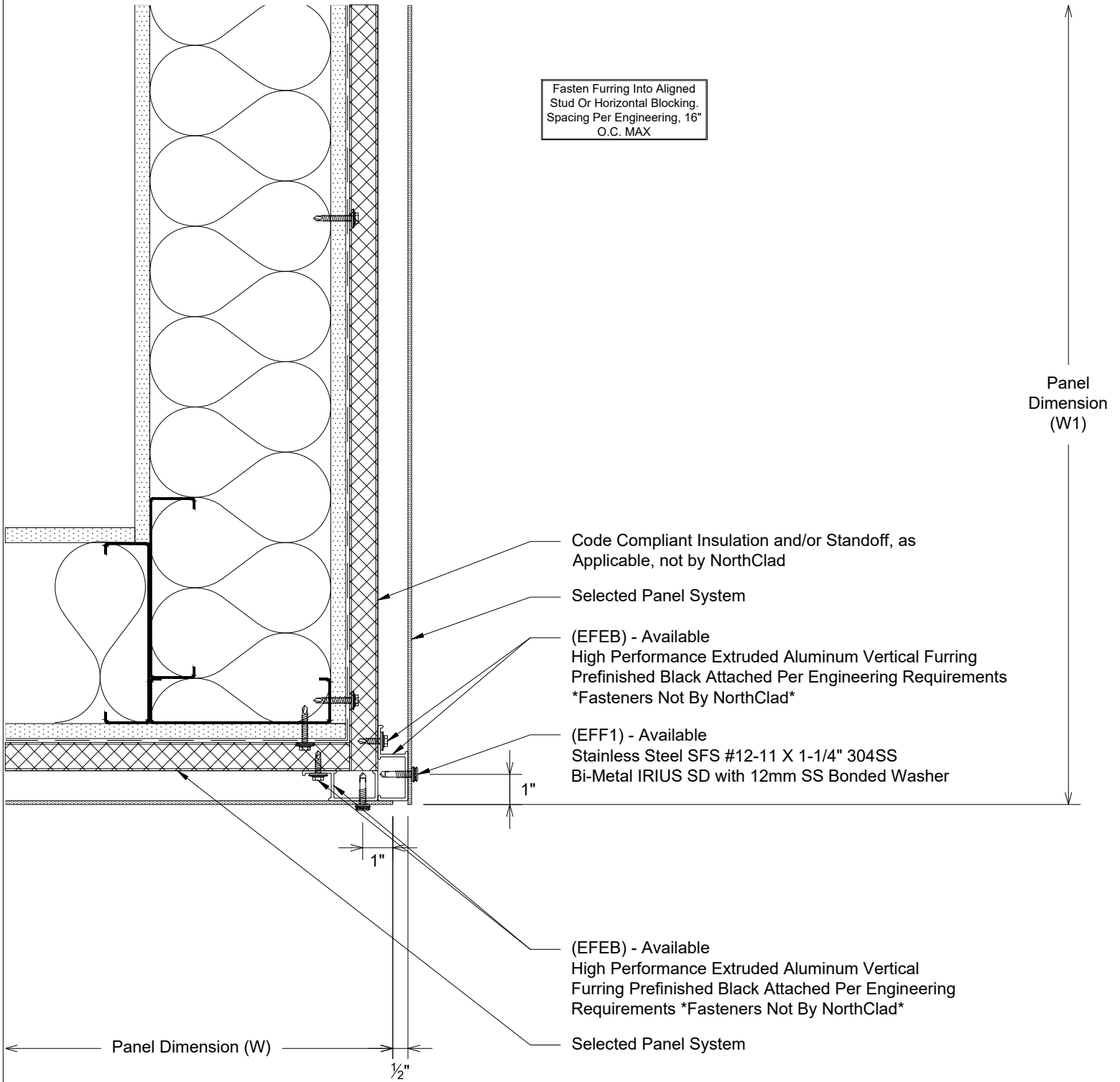
(EFF1) - Available
Stainless Steel SFS #12-11 X 1-1/4" 304SS
Bi-Metal IRIUS SD with 12mm SS Bonded Washer

Select System Panel

F

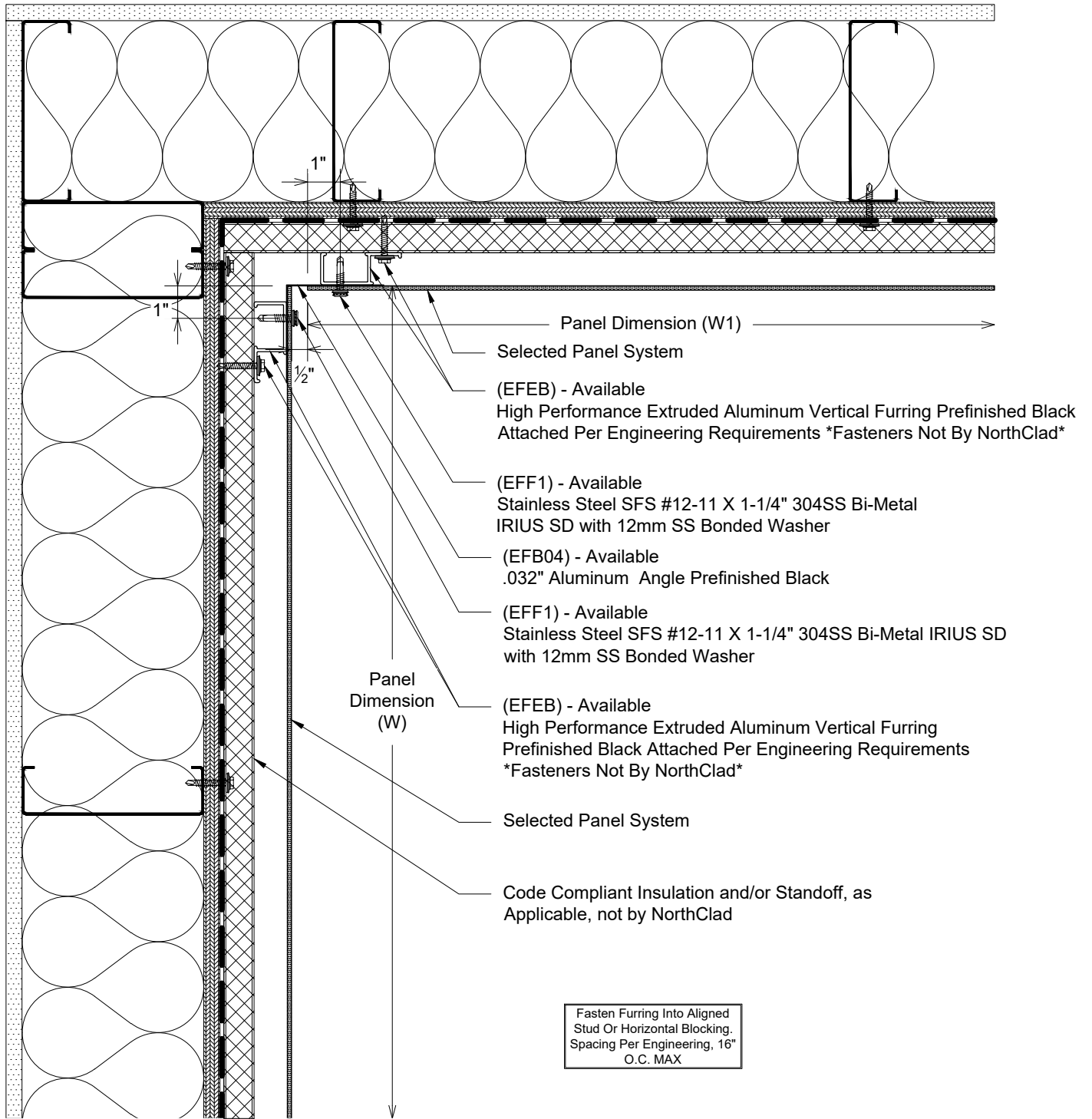
Section - NorthClad EF - Soffit to Fascia by Others

System: NorthClad EF System



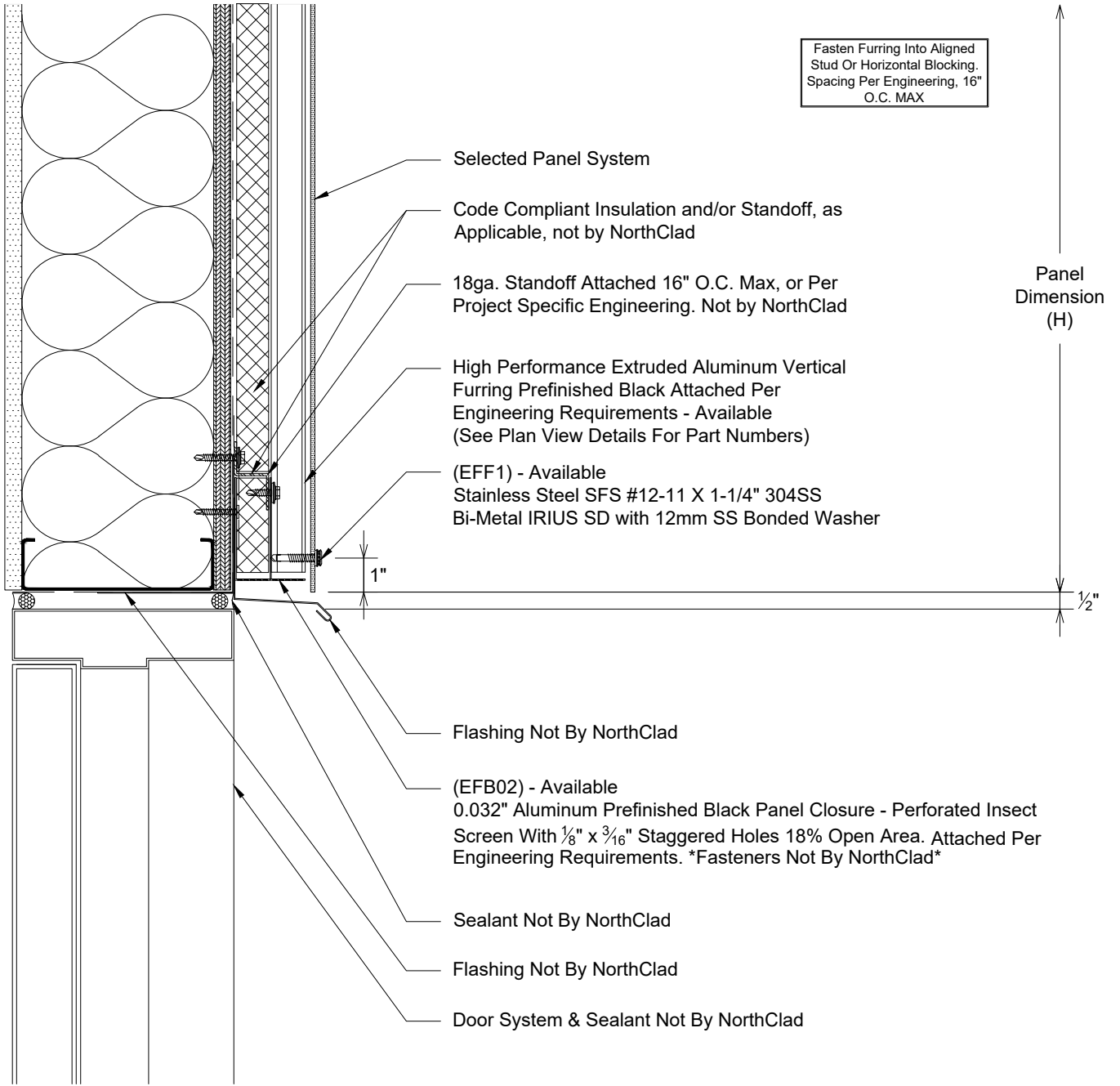
G

Plan - NorthClad EF - Outside Corner
System: NorthClad EF System



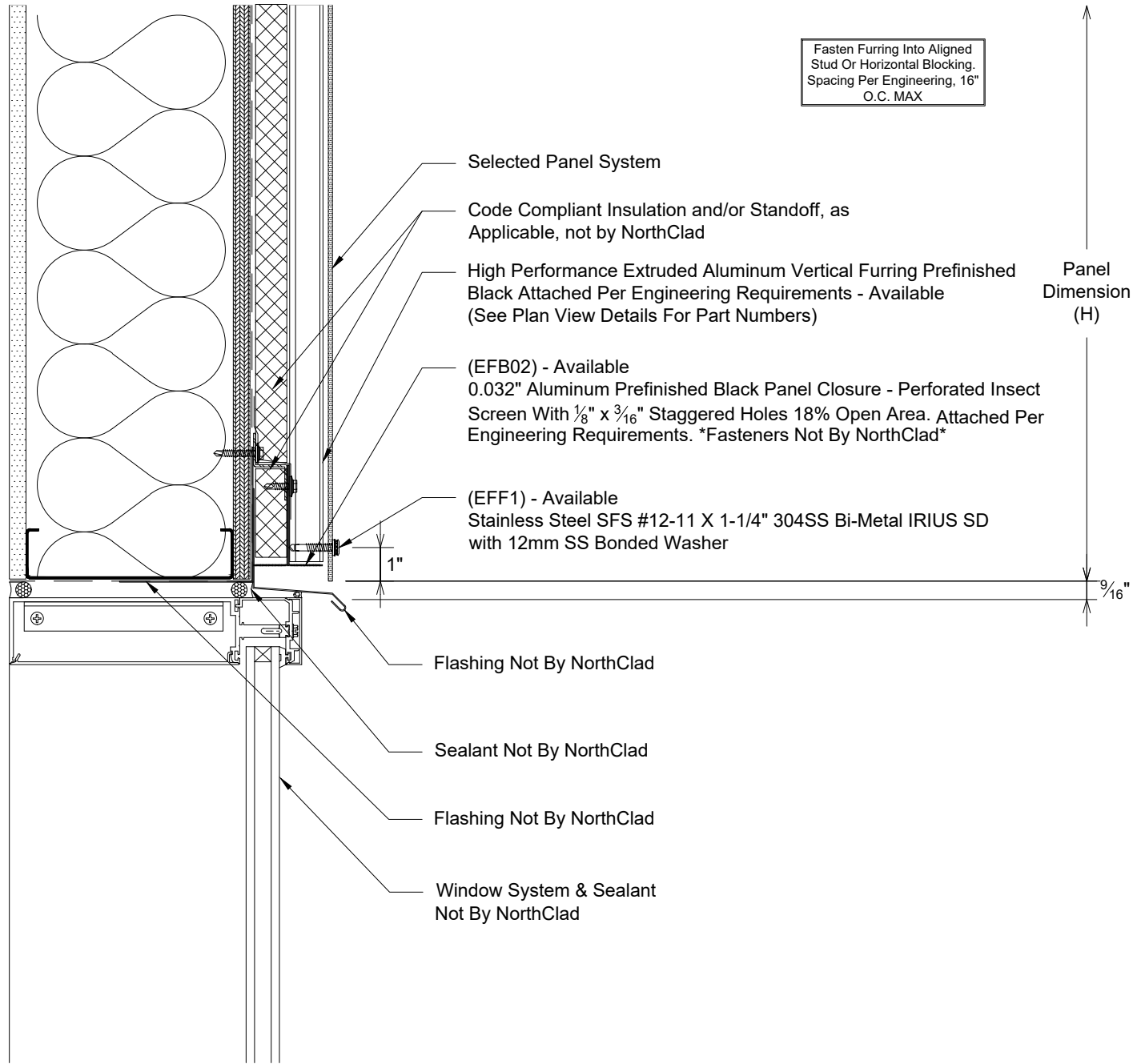
H

Plan - NorthClad EF - Inside Corner
System: NorthClad EF System



J

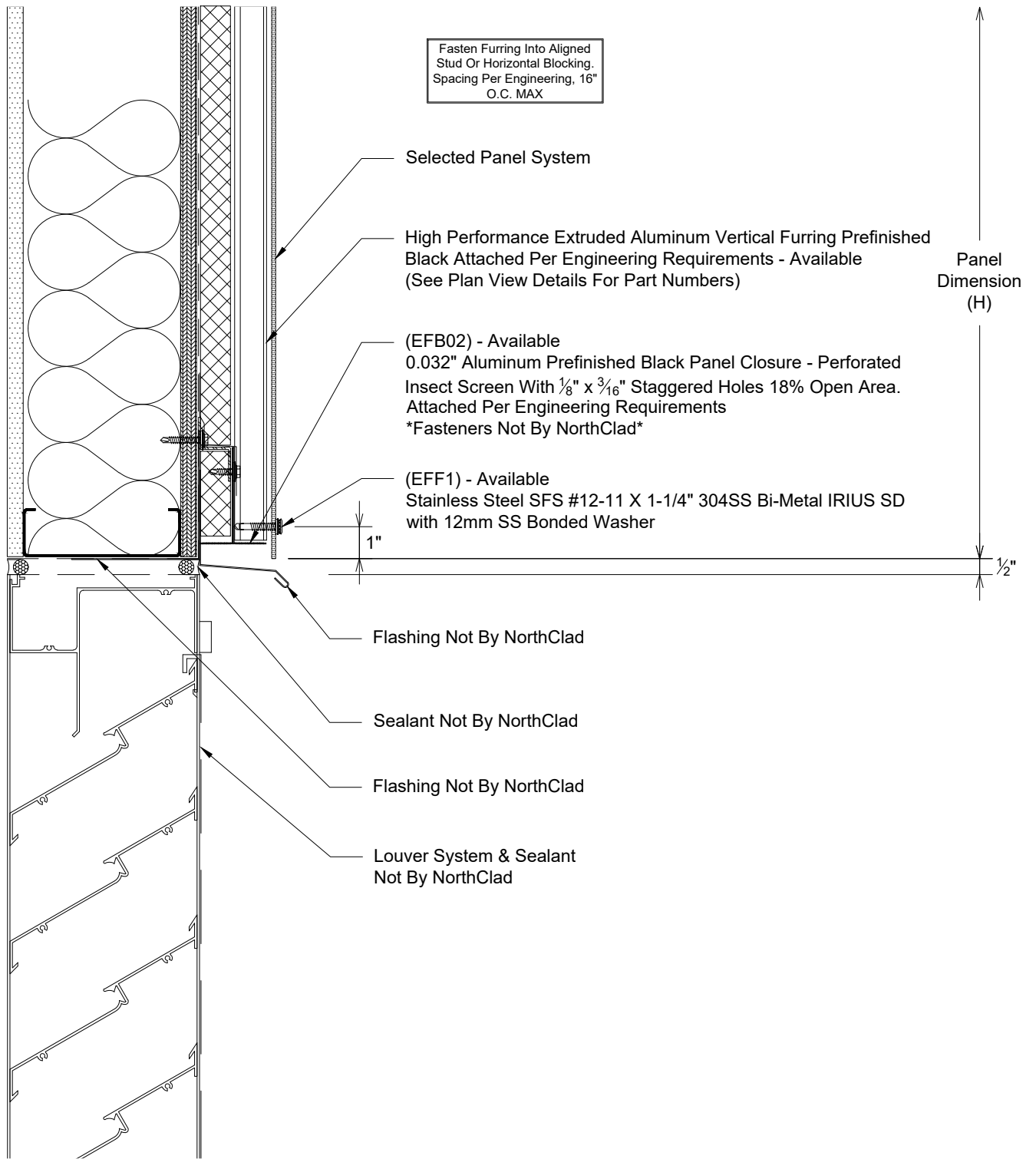
Section - NorthClad EF - Framed Opening Header
System: NorthClad EF System



J2

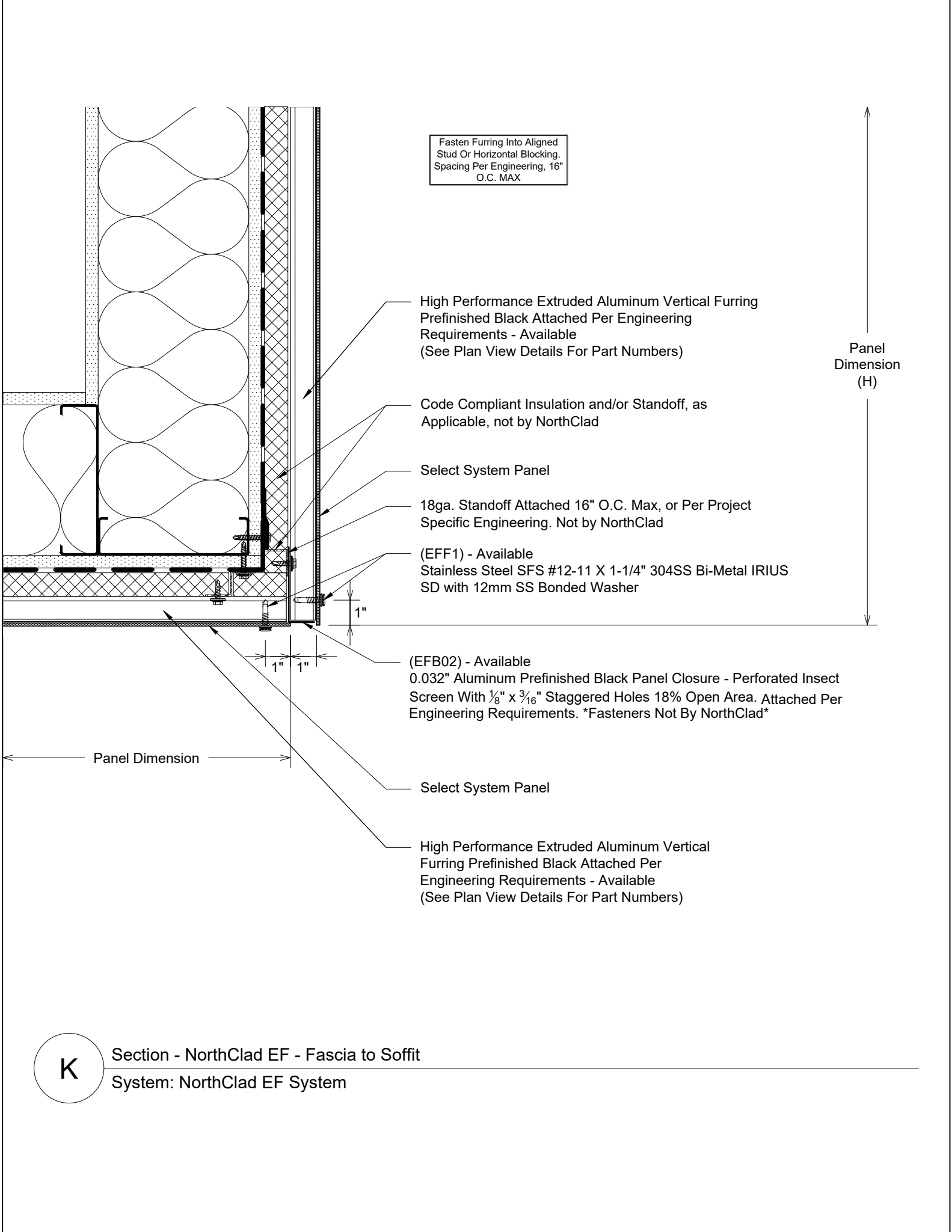
Section - NorthClad EF - Framed Opening Window Header

System: NorthClad EF System



J3

Section - NorthClad EF - Framed Opening Louver Header
System: NorthClad EF System



Fasten Furring Into Aligned Stud Or Horizontal Blocking. Spacing Per Engineering, 16" O.C. MAX

High Performance Extruded Aluminum Vertical Furring Prefinished Black Attached Per Engineering Requirements - Available (See Plan View Details For Part Numbers)

Code Compliant Insulation and/or Standoff, as Applicable, not by NorthClad

Select System Panel

18ga. Standoff Attached 16" O.C. Max, or Per Project Specific Engineering. Not by NorthClad

(EFF1) - Available
Stainless Steel SFS #12-11 X 1-1/4" 304SS Bi-Metal IRIUS SD with 12mm SS Bonded Washer

(EFB02) - Available
0.032" Aluminum Prefinished Black Panel Closure - Perforated Insect Screen With 1/8" x 3/16" Staggered Holes 18% Open Area. Attached Per Engineering Requirements. *Fasteners Not By NorthClad*

Select System Panel

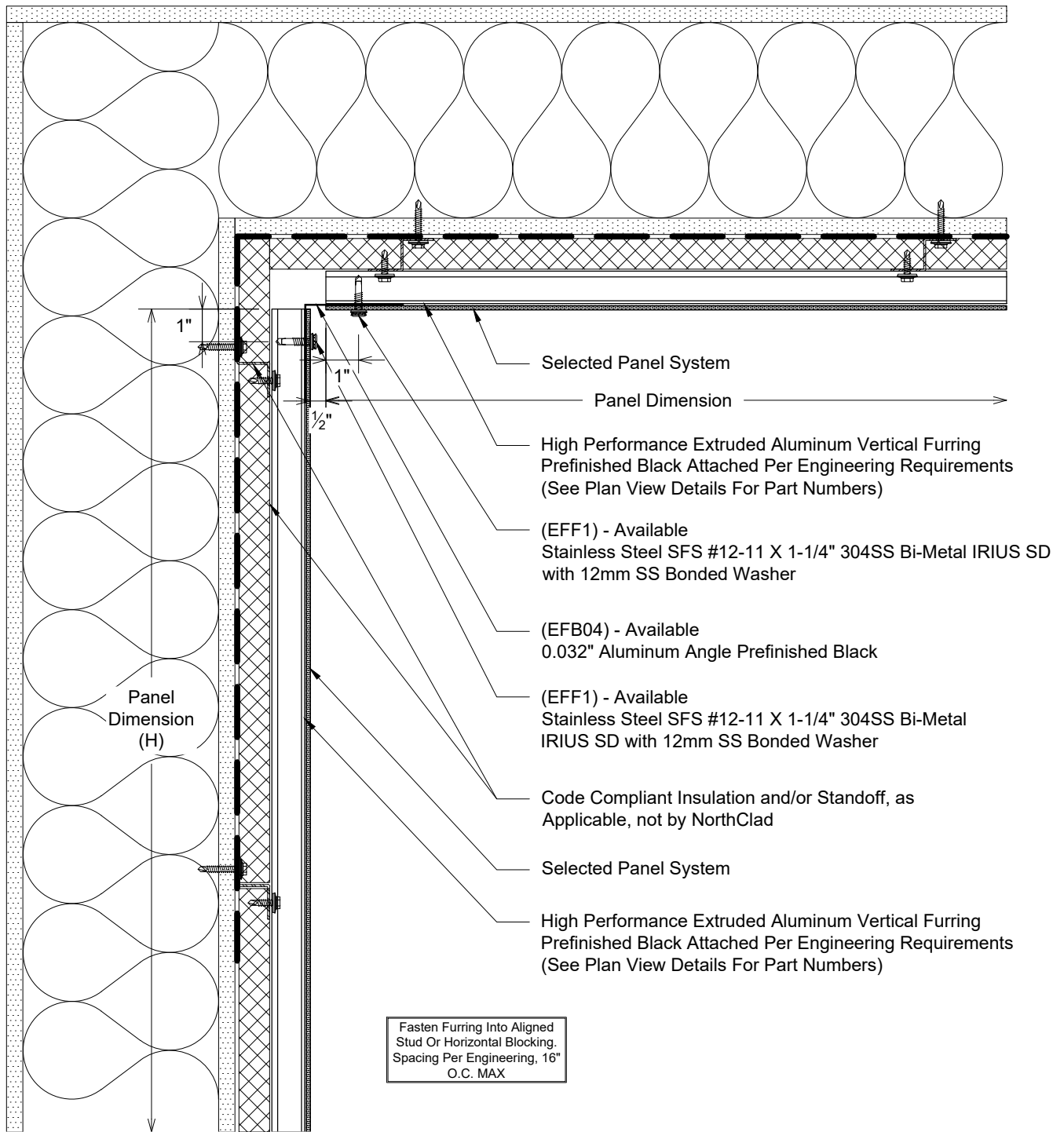
High Performance Extruded Aluminum Vertical Furring Prefinished Black Attached Per Engineering Requirements - Available (See Plan View Details For Part Numbers)

Panel Dimension (H)

Panel Dimension

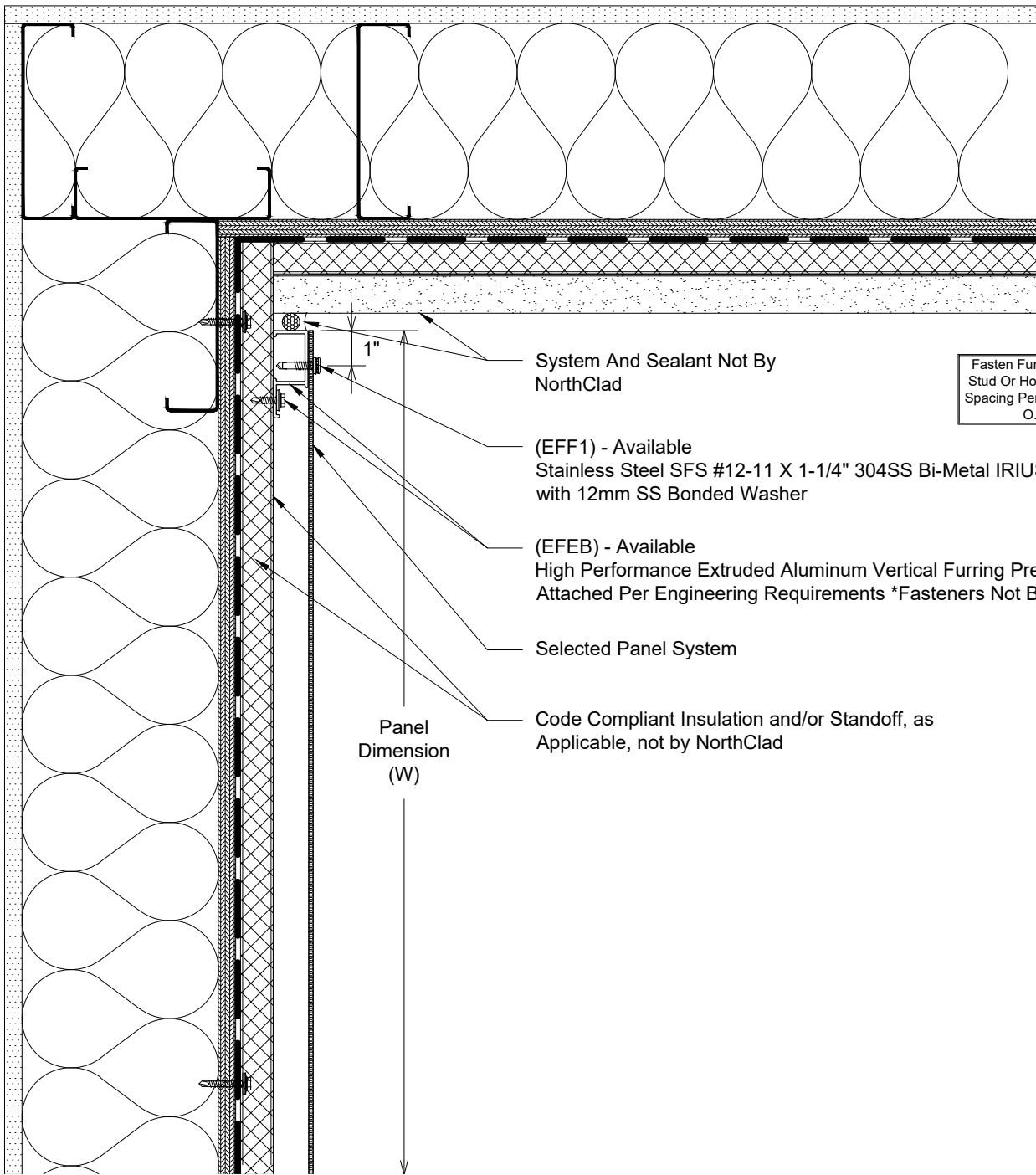
K

Section - NorthClad EF - Fascia to Soffit
System: NorthClad EF System



L

Section - NorthClad EF - Wall to Soffit w/Vent
System: NorthClad EF System



Fasten Furring Into Aligned Stud Or Horizontal Blocking. Spacing Per Engineering, 16" O.C. MAX

System And Sealant Not By NorthClad

(EFF1) - Available
Stainless Steel SFS #12-11 X 1-1/4" 304SS Bi-Metal IRIUS SD with 12mm SS Bonded Washer

(EFEB) - Available
High Performance Extruded Aluminum Vertical Furring Prefinished Black Attached Per Engineering Requirements *Fasteners Not By NorthClad*

Selected Panel System

Code Compliant Insulation and/or Standoff, as Applicable, not by NorthClad

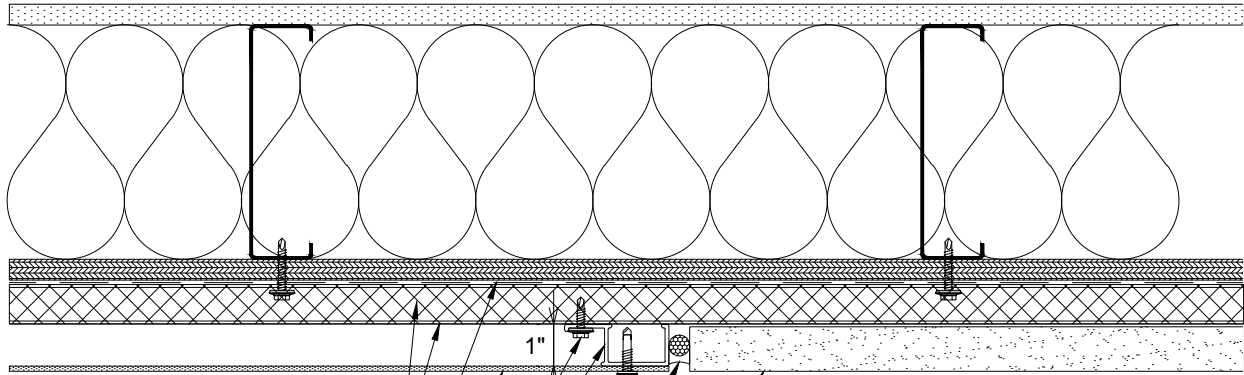
Panel Dimension (W)

M

Plan - NorthClad EF - Inside Corner Termination

System: NorthClad EF System

Fasten Furring Into Aligned
Stud Or Horizontal Blocking,
Spacing Per Engineering, 16"
O.C. MAX



Code Compliant Insulation and/or Standoff,
as Applicable, not by NorthClad

WRB & WRB Design/Detailing Not By NorthClad

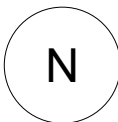
Selected Panel System

(EFEB) - Available
High Performance Extruded Aluminum Vertical Furring
Prefinished Black Attached Per Engineering Requirements
Fasteners Not By NorthClad

(EFF1) - Available
Stainless Steel SFS #12-11 X 1-1/4" 304SS Bi-Metal
IRIUS SD with 12mm SS Bonded Washer

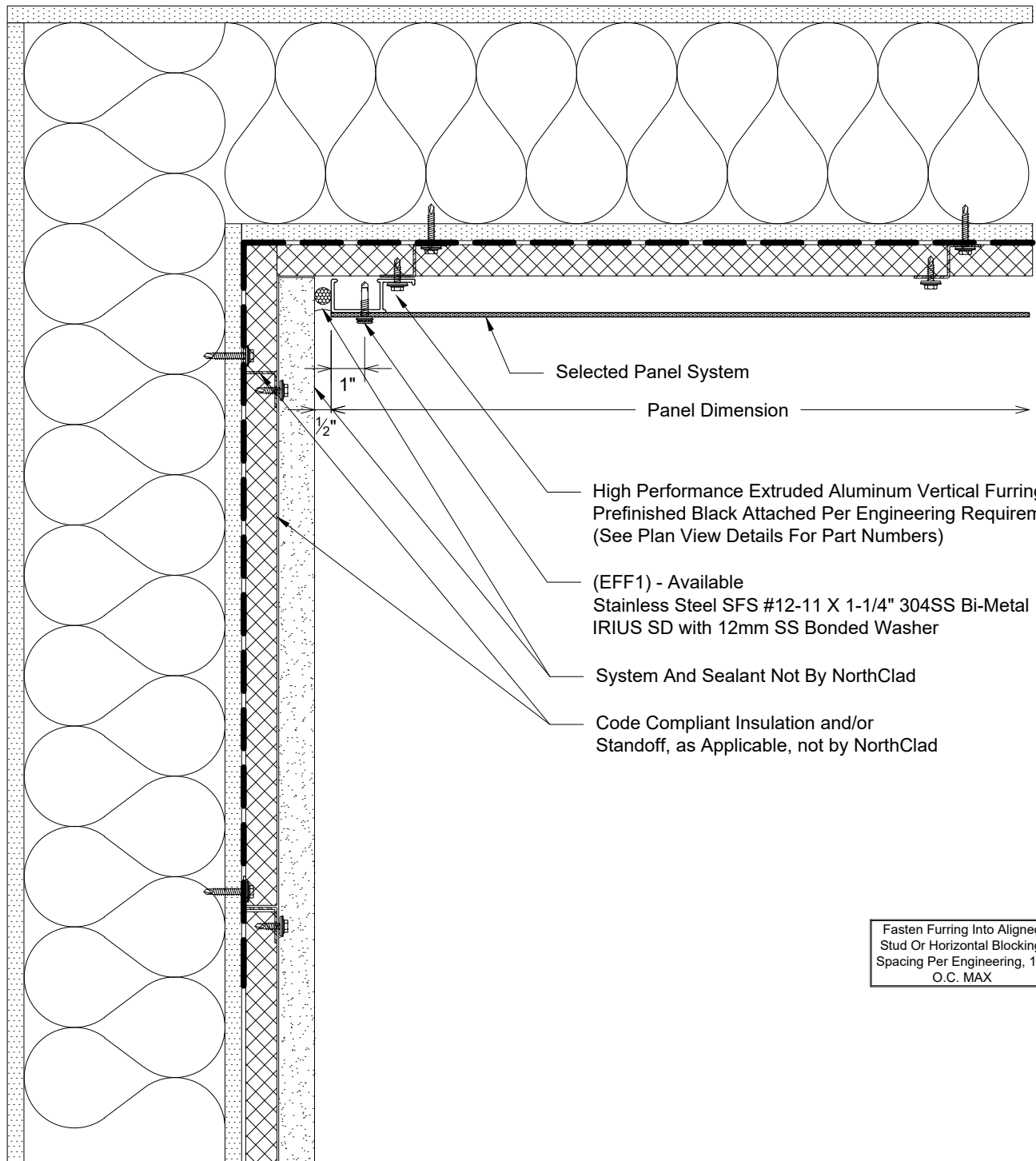
Wall System And Sealant Not By NorthClad

← Panel Dimension (W) →



Plan - NorthClad EF - Termination to Adjacent Materials

System: NorthClad EF System



Selected Panel System

Panel Dimension

High Performance Extruded Aluminum Vertical Furring
 Prefinished Black Attached Per Engineering Requirements
 (See Plan View Details For Part Numbers)

(EFF1) - Available
 Stainless Steel SFS #12-11 X 1-1/4" 304SS Bi-Metal
 IRIUS SD with 12mm SS Bonded Washer

System And Sealant Not By NorthClad

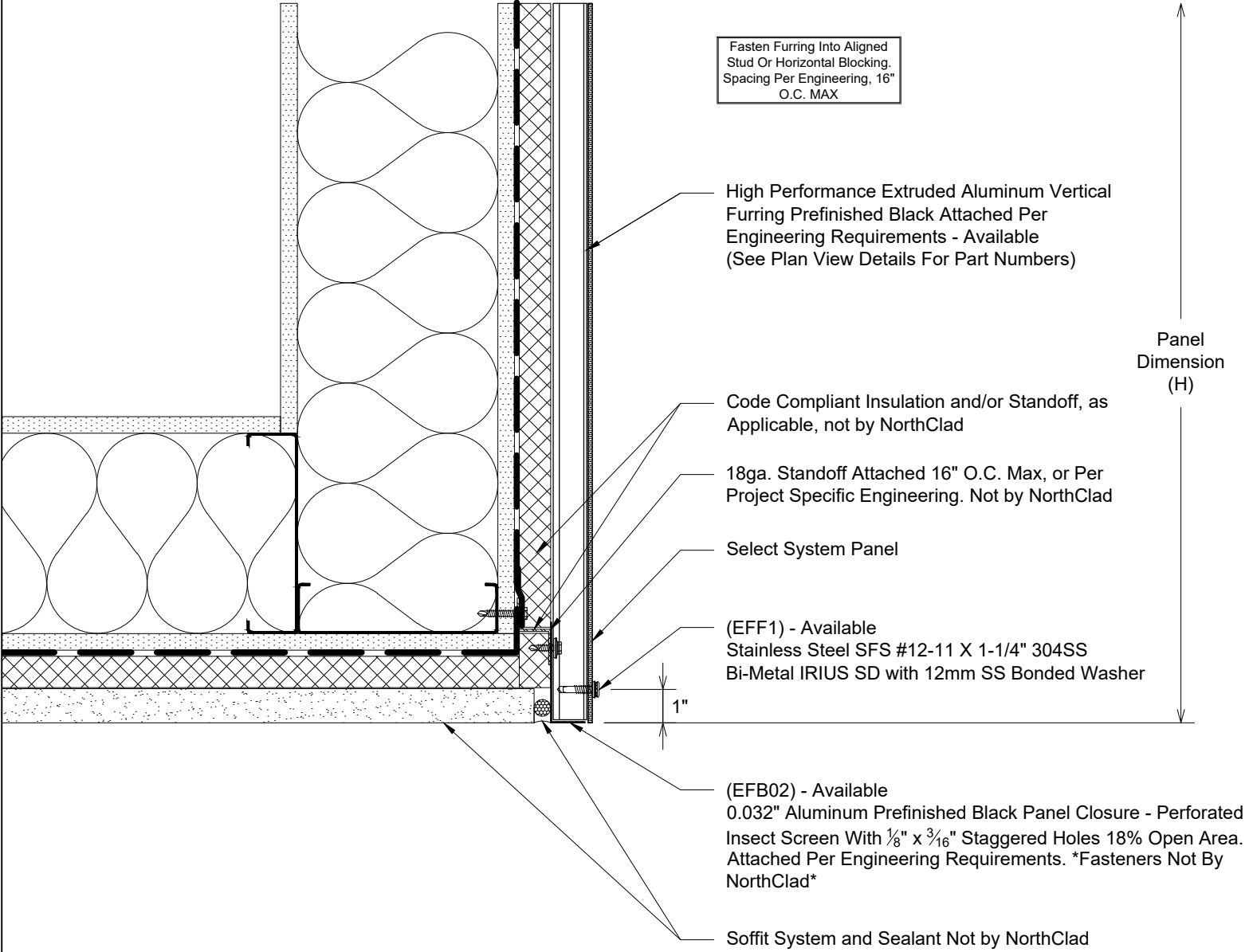
Code Compliant Insulation and/or
 Standoff, as Applicable, not by NorthClad

Fasten Furring Into Aligned
 Stud Or Horizontal Blocking.
 Spacing Per Engineering, 16"
 O.C. MAX

P

Section - NorthClad EF - Soffit to Wall by Others

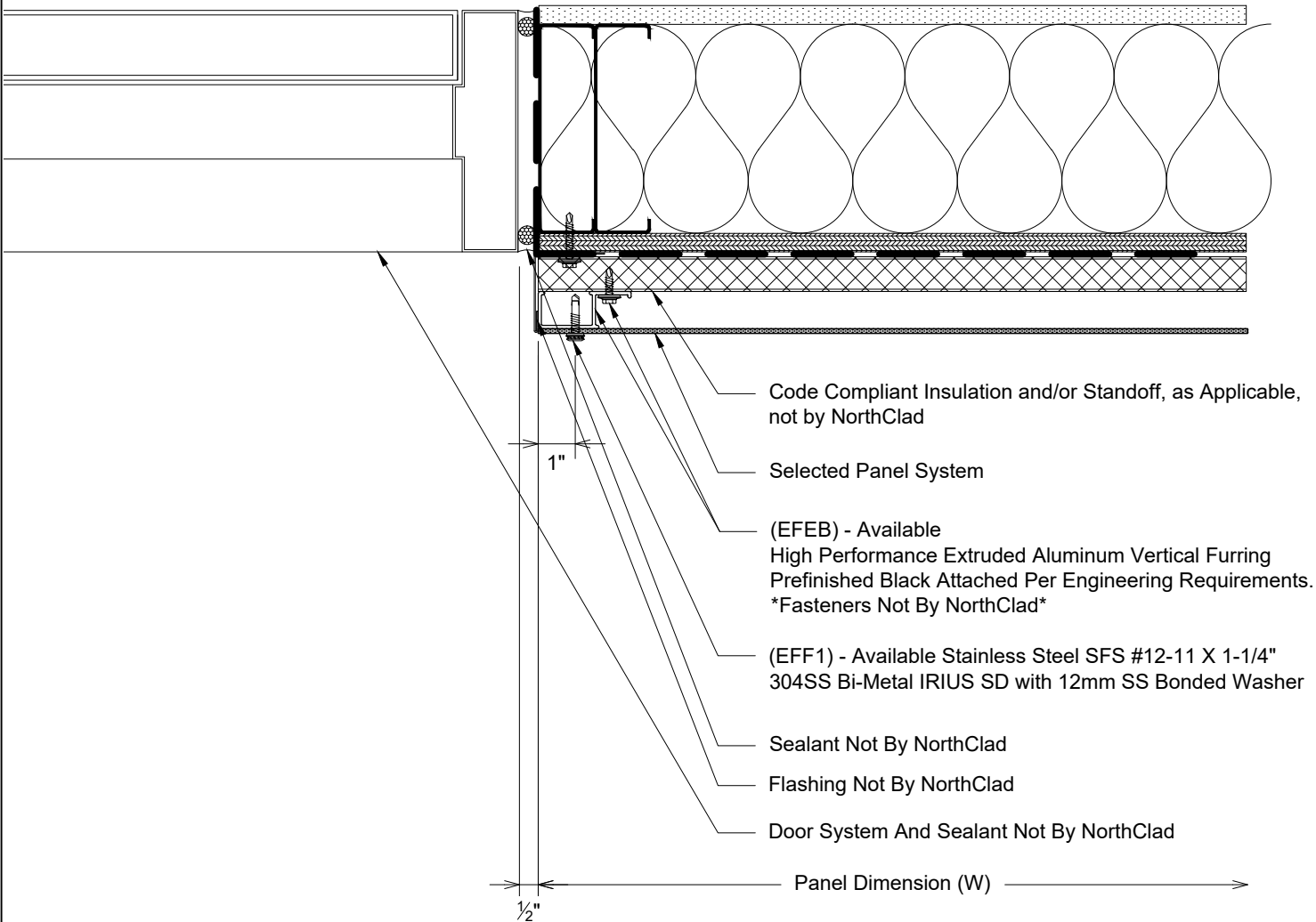
System: NorthClad EF System



Q

Section - NorthClad EF - Fascia to Soffit by Others
System: NorthClad EF System

Fasten Furring Into Aligned Stud Or Horizontal Blocking. Spacing Per Engineering, 16" O.C. MAX

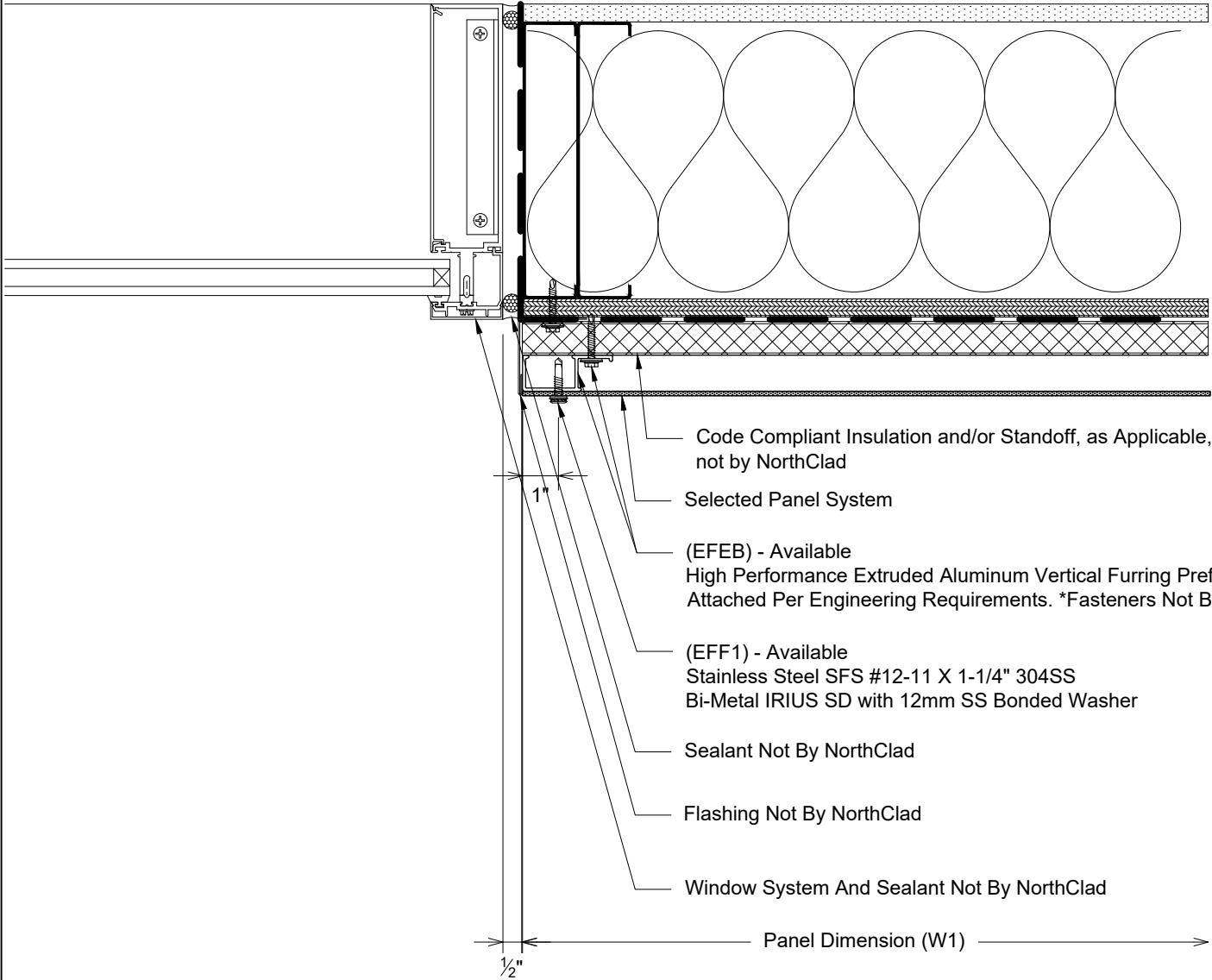


- Code Compliant Insulation and/or Standoff, as Applicable, not by NorthClad
- Selected Panel System
- (EFEB) - Available
High Performance Extruded Aluminum Vertical Furring
Prefinished Black Attached Per Engineering Requirements.
Fasteners Not By NorthClad
- (EFF1) - Available Stainless Steel SFS #12-11 X 1-1/4"
304SS Bi-Metal IRIUS SD with 12mm SS Bonded Washer
- Sealant Not By NorthClad
- Flashing Not By NorthClad
- Door System And Sealant Not By NorthClad

R1

Plan - NorthClad EF - Framed Opening Jamb
System: NorthClad EF System

Fasten Furring Into Aligned Stud Or Horizontal Blocking. Spacing Per Engineering, 16" O.C. MAX



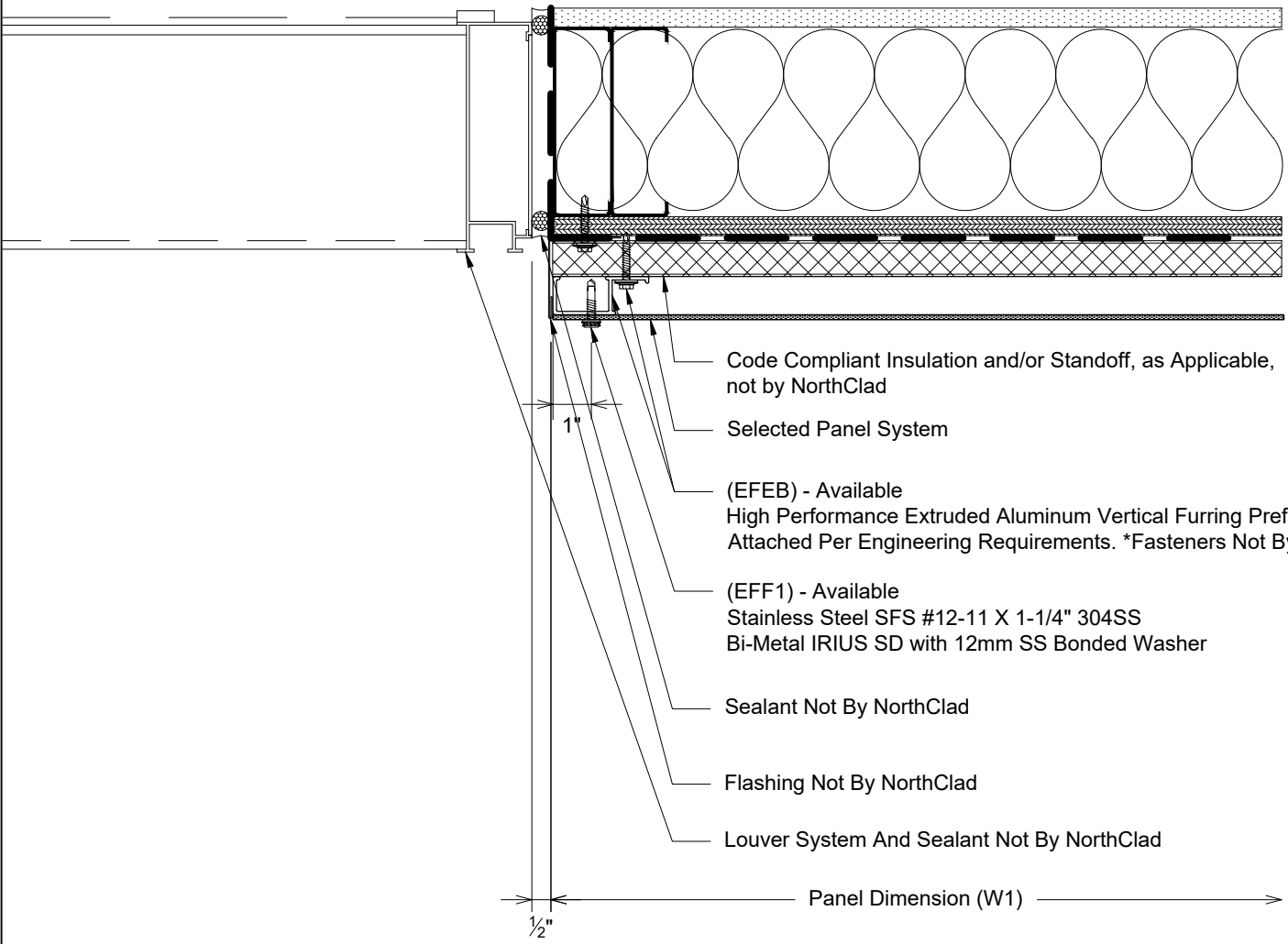
- Code Compliant Insulation and/or Standoff, as Applicable, not by NorthClad
- Selected Panel System
- (EFEB) - Available
High Performance Extruded Aluminum Vertical Furring Prefinished Black Attached Per Engineering Requirements. *Fasteners Not By NorthClad*
- (EFF1) - Available
Stainless Steel SFS #12-11 X 1-1/4" 304SS
Bi-Metal IRIUS SD with 12mm SS Bonded Washer
- Sealant Not By NorthClad
- Flashing Not By NorthClad
- Window System And Sealant Not By NorthClad

Panel Dimension (W1)

R2

Plan - NorthClad EF - Framed Opening Window Jamb
System: NorthClad EF System

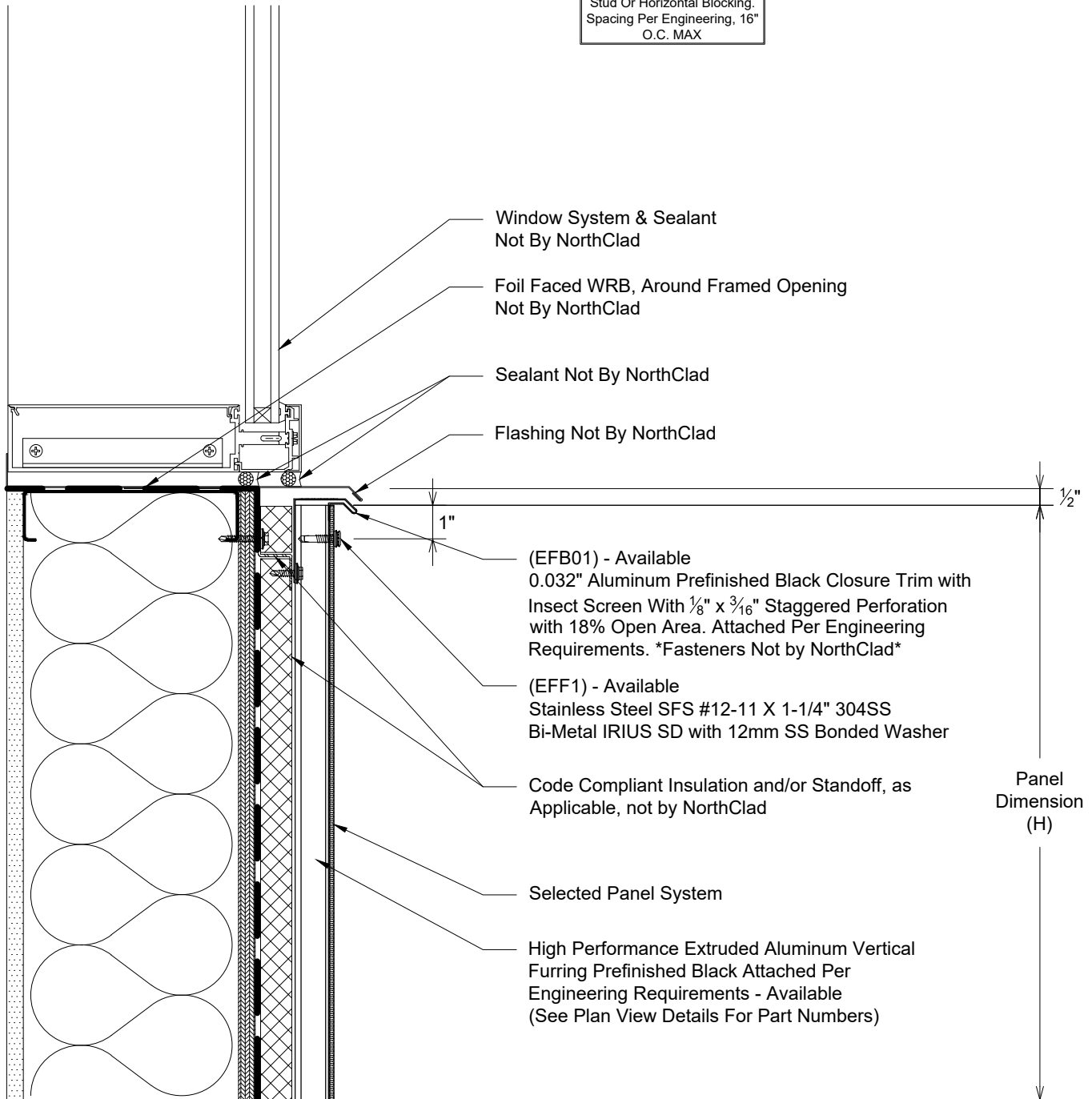
Fasten Furring Into Aligned Stud Or Horizontal Blocking. Spacing Per Engineering, 16" O.C. MAX



R3

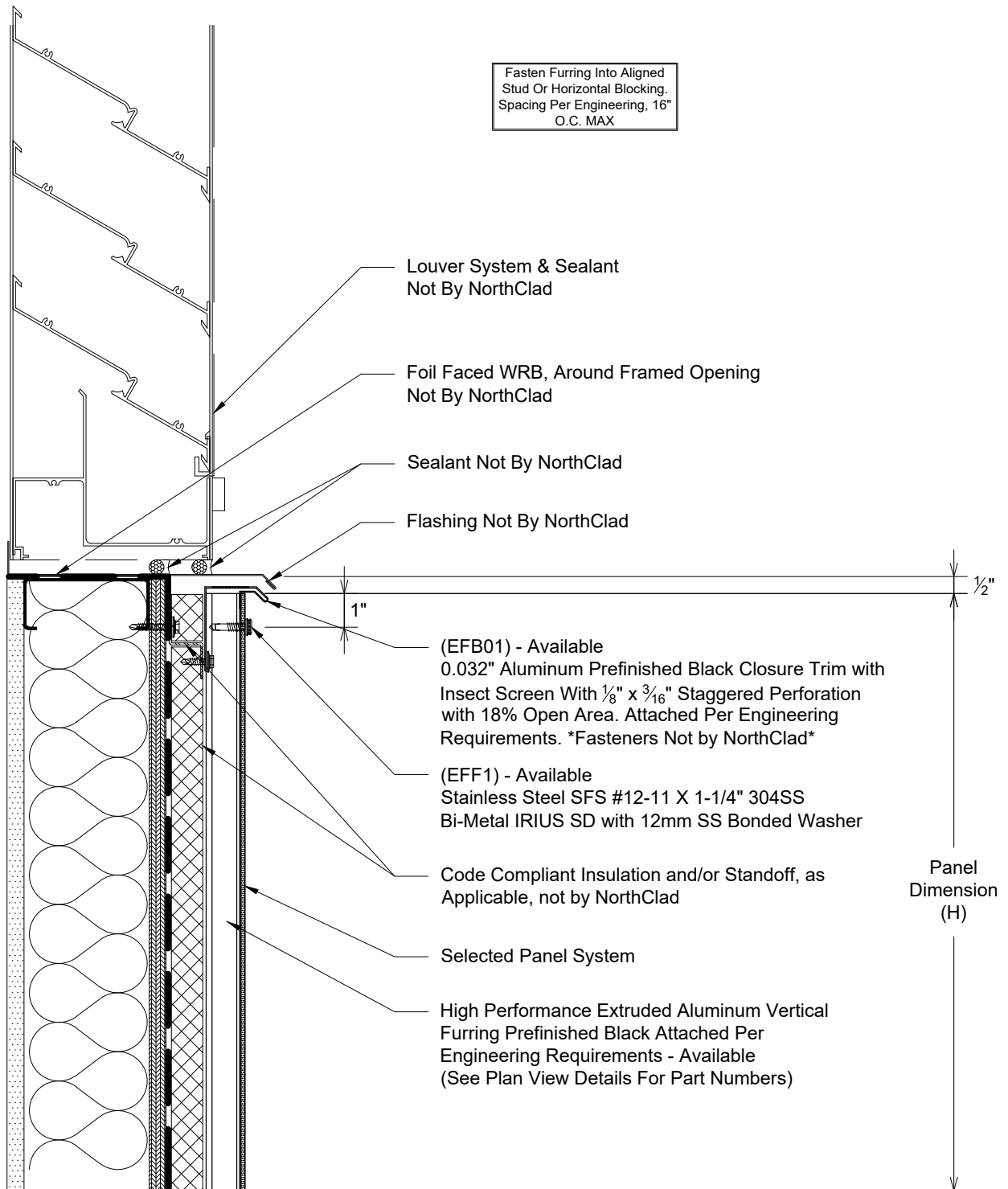
Plan - NorthClad EF - Framed Opening Louver Jamb
System: NorthClad EF System

Fasten Furring Into Aligned Stud Or Horizontal Blocking. Spacing Per Engineering, 16" O.C. MAX



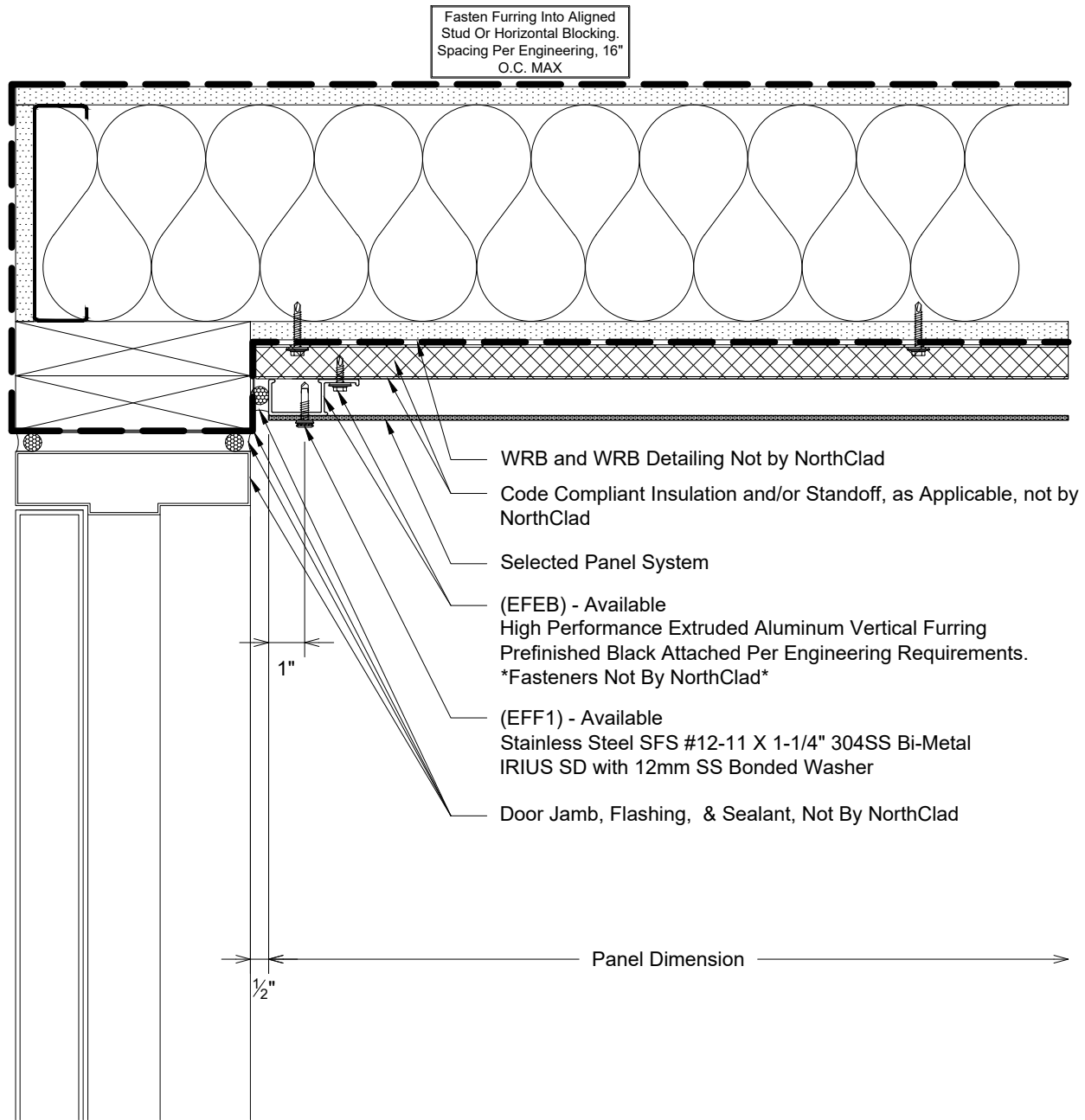
S1

Section - NorthClad EF - Framed Opening Window Sill
System: NorthClad EF System



S2

Section - NorthClad EF - Framed Opening Louver Sill
System: NorthClad EF System

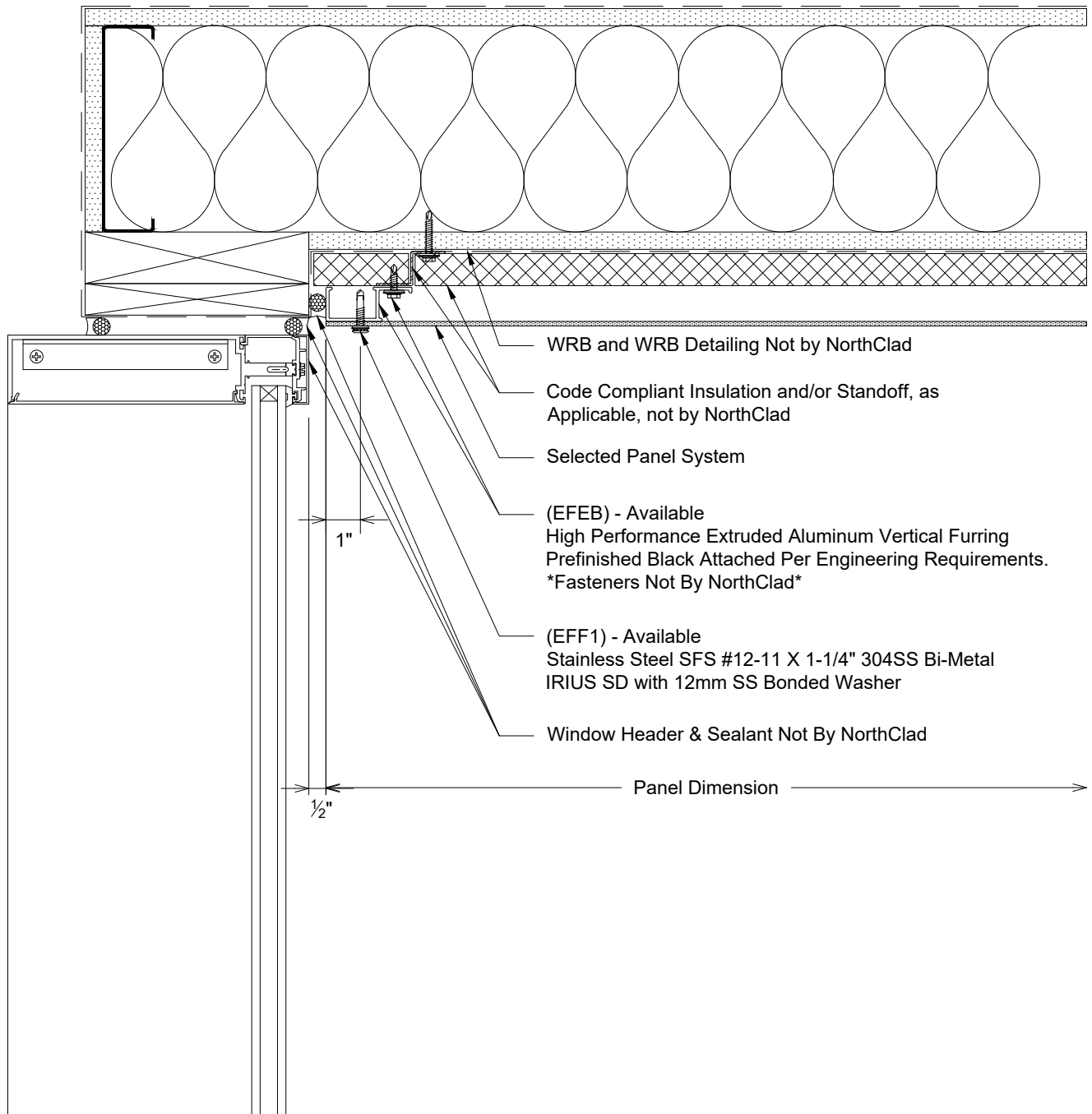


T

Plan - NorthClad EF - Inside Corner to Jamb

System: NorthClad EF System

Fasten Furring Into Aligned Stud Or Horizontal Blocking. Spacing Per Engineering, 16" O.C. MAX

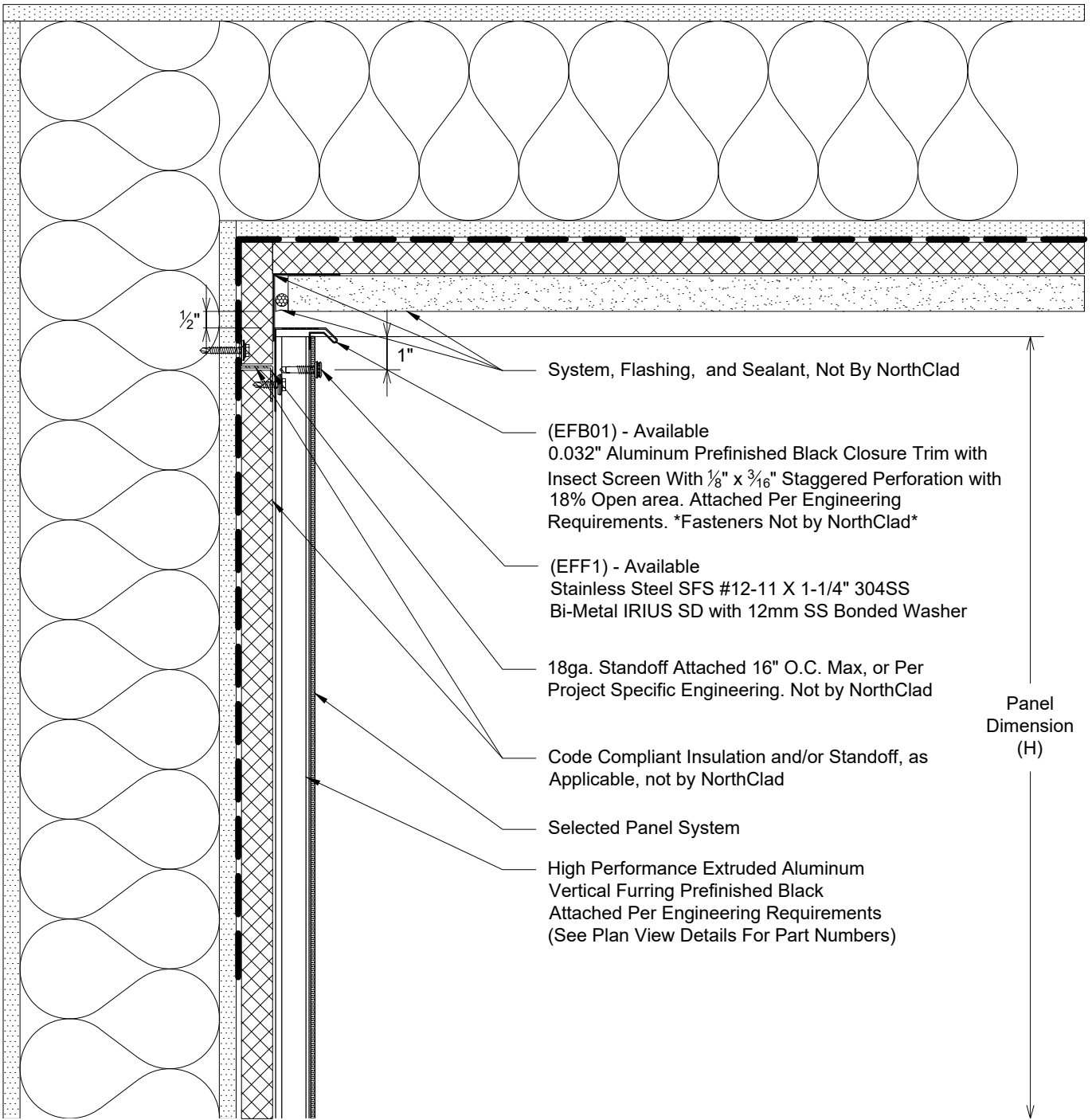


U

Section - NorthClad EF - Soffit to Window Header

System: NorthClad EF System

Fasten Furring Into Aligned Stud Or Horizontal Blocking. Spacing Per Engineering, 16" O.C. MAX



System, Flashing, and Sealant, Not By NorthClad

(EFB01) - Available
0.032" Aluminum Prefinished Black Closure Trim with Insect Screen With $\frac{1}{8}$ " x $\frac{3}{16}$ " Staggered Perforation with 18% Open area. Attached Per Engineering Requirements. *Fasteners Not by NorthClad*

(EFF1) - Available
Stainless Steel SFS #12-11 X 1-1/4" 304SS Bi-Metal IRIUS SD with 12mm SS Bonded Washer

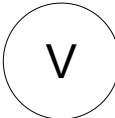
18ga. Standoff Attached 16" O.C. Max, or Per Project Specific Engineering. Not by NorthClad

Code Compliant Insulation and/or Standoff, as Applicable, not by NorthClad

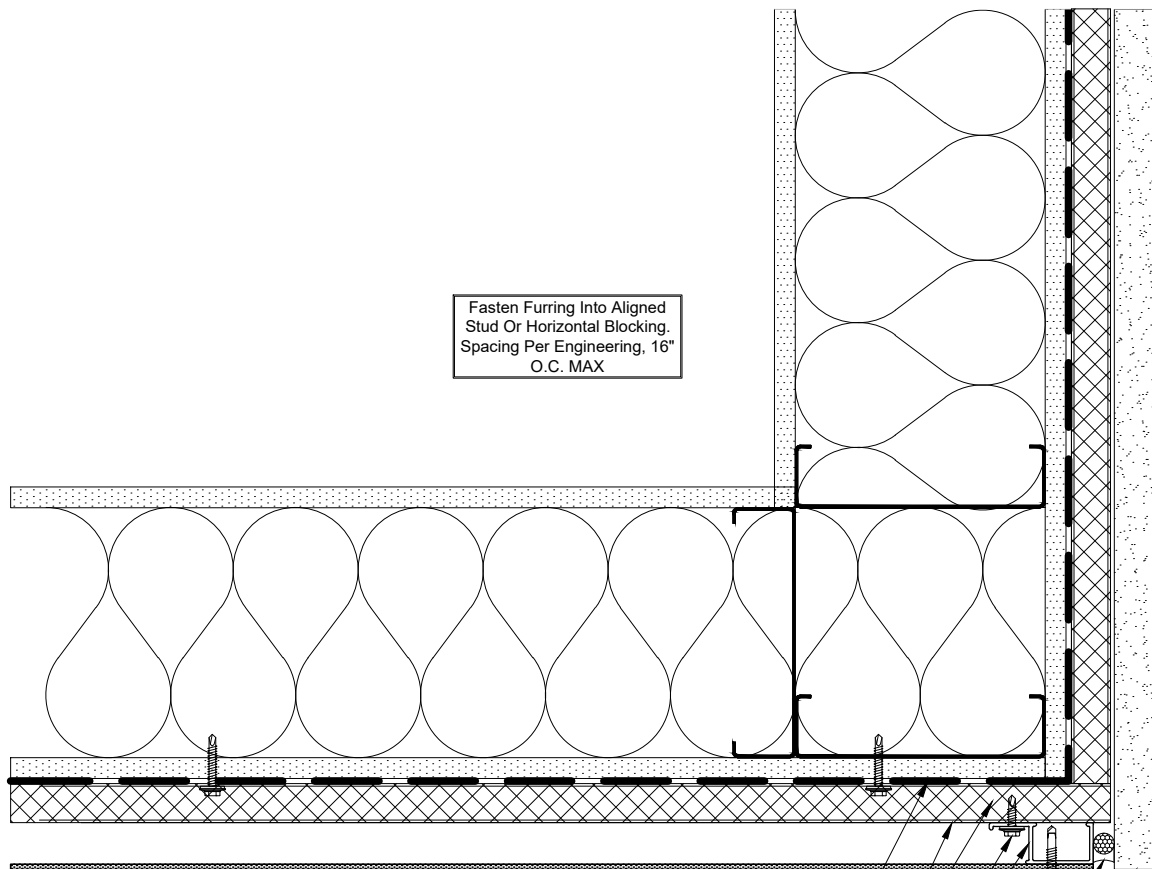
Selected Panel System

High Performance Extruded Aluminum Vertical Furring Prefinished Black Attached Per Engineering Requirements (See Plan View Details For Part Numbers)

Panel Dimension (H)



Section - NorthClad EF - Wall to Soffit by Others
System: NorthClad EF System



Fasten Furring Into Aligned Stud Or Horizontal Blocking. Spacing Per Engineering, 16" O.C. MAX

- WRB and WRB Detailing Not by NorthClad
 - Selected Panel System See Detail S02 For Typical System Call Outs
 - Code Compliant Insulation and/or Standoff, as Applicable, not by NorthClad
 - (EFEB) - Available
 - High Performance Extruded Aluminum Vertical Furring Prefinished Black Attached Per Engineering Requirements *Fasteners Not By NorthClad*
 - (EFF1) - Available
 - Stainless Steel SFS #12-11 X 1-1/4" 304SS Bi-Metal IRIUS SD with 12mm SS Bonded Washer
 - System And Sealant Not By NorthClad
- Panel Dimension (W)
- 1"
- 1/2"



Plan - NorthClad EF - Outside Corner to System by Others
 System: NorthClad EF System