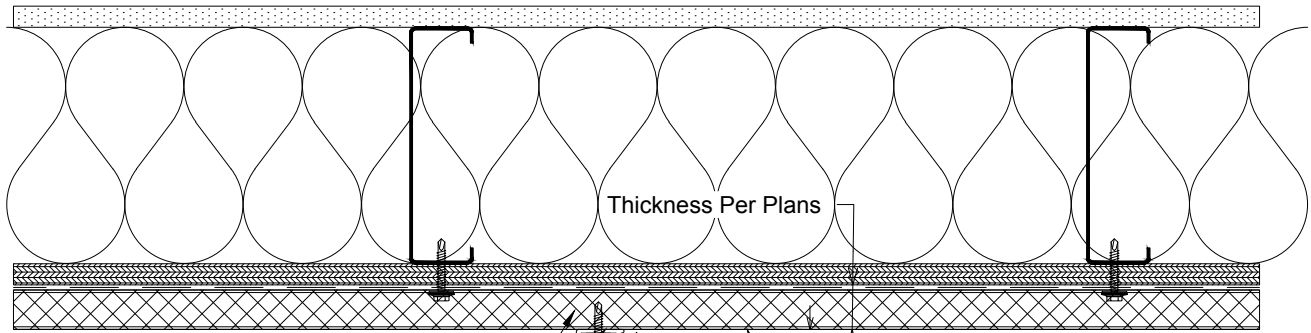


Fasten Furring Into Aligned Stud Or Horizontal Blocking.
Spacing Per Engineering, 16"
O.C. MAX



Code Compliant Insulation and/or Standoff, as Applicable, not by NorthClad

(EFZB) - Available
High Performance Extruded Aluminum Vertical Furring Prefinished Black Attached Per Engineering Requirements. *Fastener Not By NorthClad*

WRB & WRB Design/Detailing Not By NorthClad

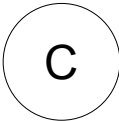
Selected Panel System

(EFF1) - Available
Stainless Steel SFS #12-11 X 1-1/4" 304SS
Bi-Metal IRIUS SD with 12mm SS Bonded Washer

Fastener Dimension

Fastener Dimension

Panel Dimension



Plan - NorthClad EF - Vertical Fastener
System: NorthClad EF System