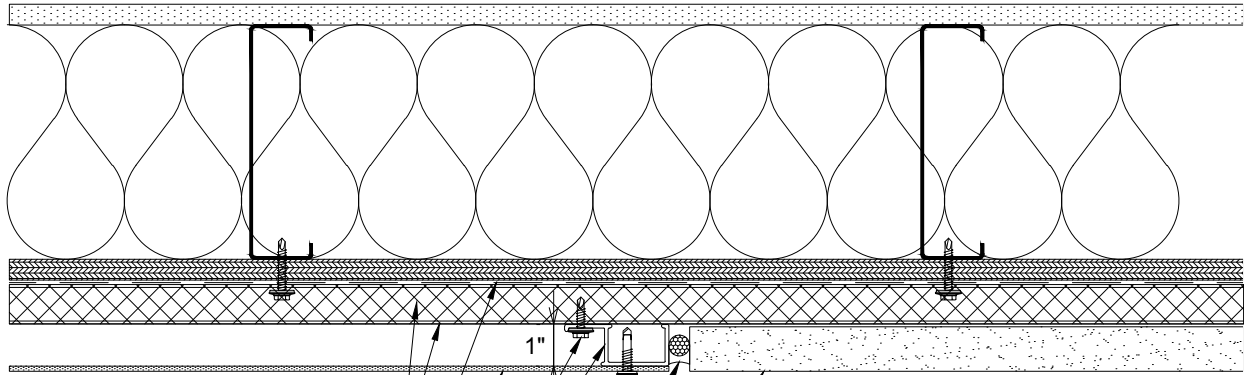


Fasten Furring Into Aligned
Stud Or Horizontal Blocking,
Spacing Per Engineering, 16"
O.C. MAX



Code Compliant Insulation and/or Standoff,
as Applicable, not by NorthClad

WRB & WRB Design/Detailing Not By NorthClad

Selected Panel System

(EFEB) - Available
High Performance Extruded Aluminum Vertical Furring
Prefinished Black Attached Per Engineering Requirements
Fasteners Not By NorthClad

(EFF1) - Available
Stainless Steel SFS #12-11 X 1-1/4" 304SS Bi-Metal
IRIUS SD with 12mm SS Bonded Washer

Wall System And Sealant Not By NorthClad

← Panel Dimension (W) →



Plan - NorthClad EF - Termination to Adjacent Materials

System: NorthClad EF System