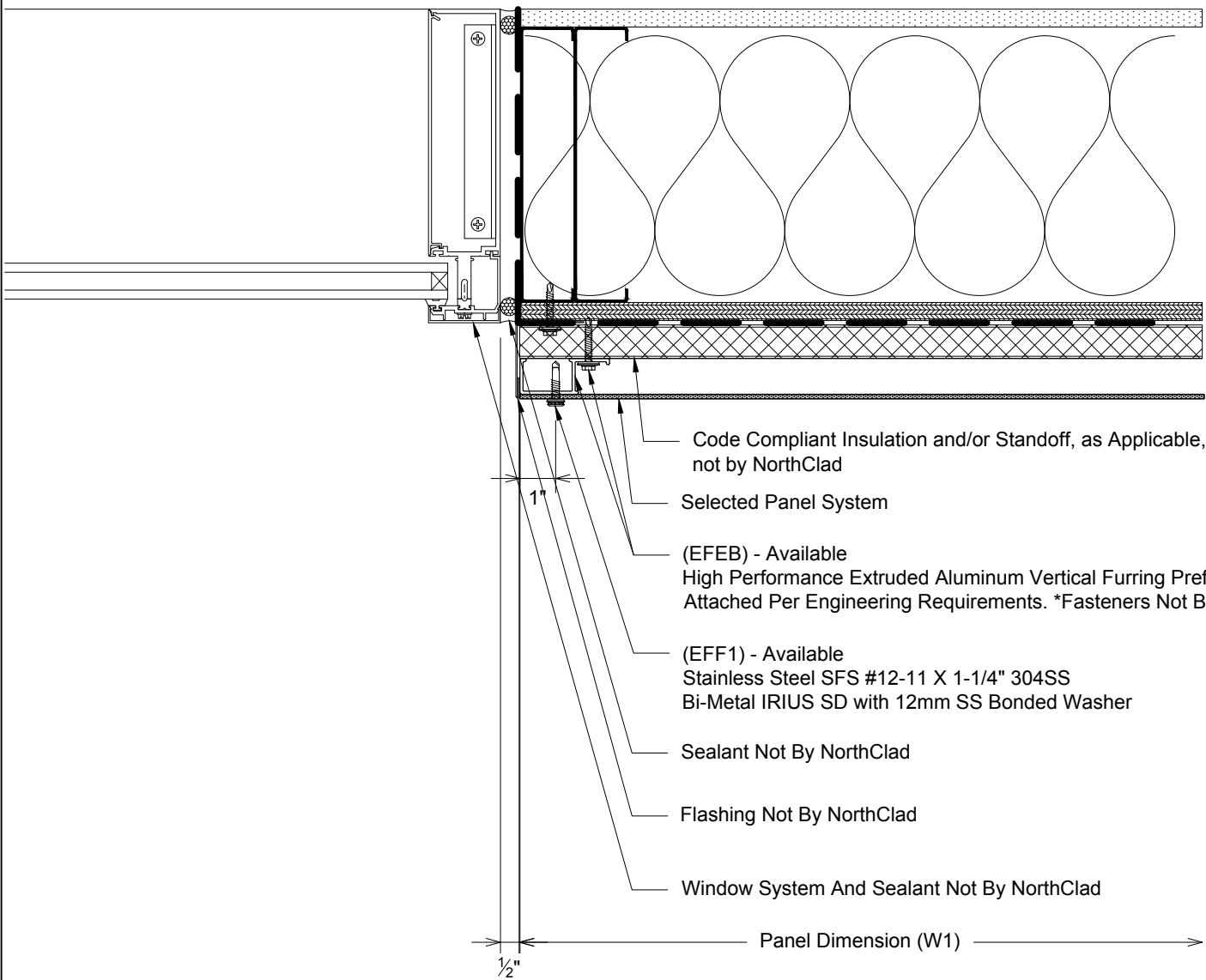


Fasten Furring Into Aligned Stud Or Horizontal Blocking. Spacing Per Engineering, 16" O.C. MAX



- Code Compliant Insulation and/or Standoff, as Applicable, not by NorthClad
- Selected Panel System
- (EFEB) - Available
High Performance Extruded Aluminum Vertical Furring Prefinished Black Attached Per Engineering Requirements. *Fasteners Not By NorthClad*
- (EFF1) - Available
Stainless Steel SFS #12-11 X 1-1/4" 304SS
Bi-Metal IRIUS SD with 12mm SS Bonded Washer
- Sealant Not By NorthClad
- Flashing Not By NorthClad
- Window System And Sealant Not By NorthClad

Panel Dimension (W1)

1/2"

1"

R2

Plan - NorthClad EF - Framed Opening Window Jamb
System: NorthClad EF System