

The logo for REYNOBOND, featuring a blue chevron-like shape to the left of the brand name in a sans-serif font.

REYNOBOND®

The background of the advertisement is an abstract composition of overlapping, angular planes in various shades of blue and grey, creating a sense of depth and architectural structure.

SEE THE SPECTRUM OF
POSSIBILITIES

Arconic
Architectural
Products

For architects and builders, few things are more important than the successful execution of a bold design. That's why so many rely on Reynobond® composite material to amplify the impact of their ideas. Our lightweight, formable and colorful coil-coated finishes are available in both standard and custom finish options—opening up a world of possibilities for even your most ambitious concepts. Dramatic curves, daring angles and unique shapes come to life with eye-catching appeal and superior performance. Add easy maintenance with up to a 30-year warranty and you have a design solution that can go as far as your specifications—and imagination—require.

Bold Ideas Require Bold Finishes

Use this color chart as design inspiration for your next project. If you don't find the right shade, we're happy to produce individual custom colors upon request.



Colorweld® 500/500XL Finishes

Our coil-coated Colorweld® 500 and Colorweld® 500XL finishes offer superior performance. From soothing neutrals to shimmering silvers, these premium low- to medium-gloss finishes feature advanced resins with 70% polyvinylidene fluoride (PVDF) that provide excellent flexibility, strength and weather resistance.



Design Line™ Nature-Inspired Finishes

Inspired by Mother Nature, our Design Line™ finish system brings you a variety of striking options that mimic natural materials while providing all the performance benefits of Reynobond® composite material. These multi-layer-coat, advanced polymer finishes offer high resistance to aging, UV and corrosion that meets and exceeds their natural counterparts—delivering both beauty and brawn.



Brushed Aluminum Finishes

Sleek, contemporary and highly attractive, our Brushed Aluminum finishes combine natural beauty with high performance. They are designed to meet the aesthetics and durability requirements of exterior use to create a natural look that distinguishes your buildings.



Duragloss® Finishes

With our Duragloss® paint system, you can explore your most imaginative ideas. Its UV resistance, bright color capabilities and high-to-low gloss levels add up to a bold image with fewer maintenance costs over the life of the building.



Anodized Finishes

With Anodized Reynobond® composite material, style goes more than skin deep. The anodized layer creates a harder, smoother surface with resistance to abrasion. Our Anodized composite material is lightweight and easy to fabricate, and has a great strength-to-weight ratio.

Duragloss® 5000¹

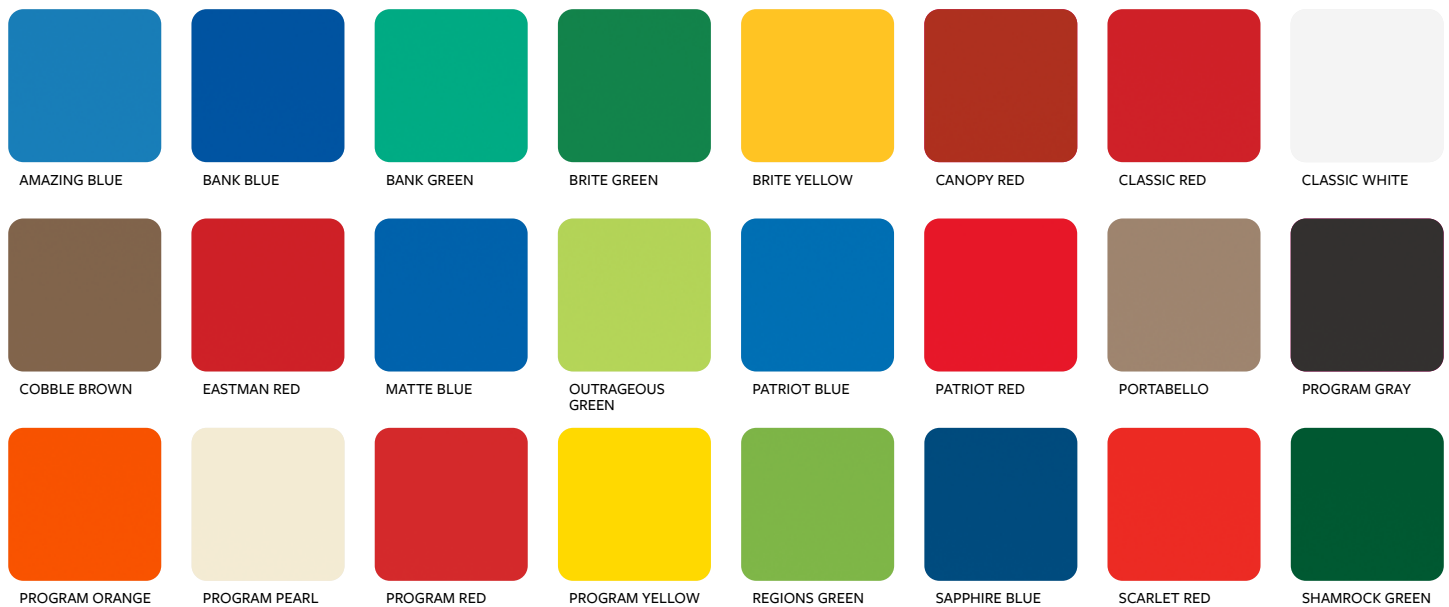
2-Coat Finishes | 20-year warranty | AAMA 2604



Duragloss® 3000¹

For other program specific finishes please contact AAP LLC customer service department.

2-Coat and 3-Coat (Stripe) Finishes | 10-year warranty | AAMA 2604



Duragloss® 1000¹

2-Coat Finishes | 5-year warranty | AAMA 2603



Colorweld® 500

Series One | 2-Coat Solid Finishes | 30-year warranty | AAMA 2605



*Color is a 3-coat solid finish and may be subject to a higher price. Please consult Regional Sales Manager for additional pricing.

**Coil width is program specific. Please consult your Regional Sales Manager for applicable pricing.

Series Two | 2-Coat Mica Finishes | 30-year warranty | AAMA 2605



Colorweld® 500XL¹ Compatible with PPG's DuraPrep® Prep™ 400 graffiti and overspray cleaner.

Series Three | 3-Coat Metallic Finishes | 30-year warranty | AAMA 2605



BRIGHT SILVER
METALLIC



CHAMPAGNE
METALLIC



COPPER PENNY



NIGHTFALL
METALLIC



TITANIUM

Matte Series

2-Coat Solid Finishes | 30-year warranty | AAMA 2605



GRANITE GRAY



GUNITE GREEN



IRON BLACK



NATURAL CLAY



POWDER BLACK



SHALE BLUE



WHISPER WHITE

¹Due to the printing process, the colors depicted here may deviate from the actual colors available.

Arconic Architectural Products LLC (AAP) reserves the right to change or withdraw information contained herein without prior notice. Contact AAP for material samples.

Design Line™

Wood Finishes | 30-year warranty | AAMA 2605



ASHWOOD GRAY



BLOND ECHO



COLONIAL RED



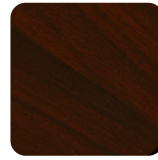
EMBALA BROWN



FRENCH WALNUT



ITALIAN WALNUT



MAHOGANY BROWN



RUSTIC WALNUT



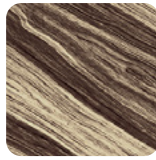
SCOTTISH OAK



SUNNY PEAR



TENDER OAK



ZEBRA

Stone Finishes | 30-year warranty | AAMA 2605



ACIERO CORTEN



APOLLO STONE



RUSTED METAL



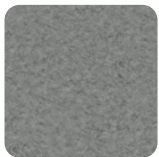
TERRA COTTA
MINERAL II



TERRA DI SIENA II

Mineral Finishes | 30-year warranty | AAMA 2605

Concrete Finishes | 30-year warranty | AAMA 2605



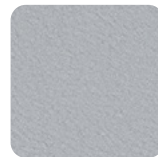
INDUSTRIAL
CONCRETE



STATELY CONCRETE



GRAPHITE



FROZEN SILVER

Textured Finishes | 30-year warranty | AAMA 2605

Patina Finishes | 30-year warranty | AAMA 2605



COPPER PATINA



RUST PATINA



ZINC CHARCOAL

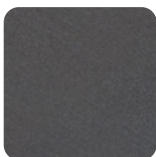


ZINC PATINA

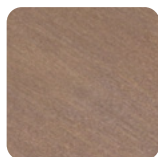
Metro Zinc Finishes | 30-year warranty | AAMA 2605



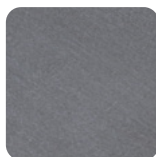
AVENUE SILVER



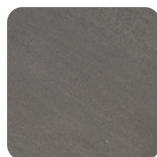
ASPHALT BLACK



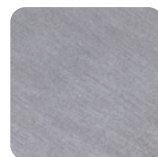
BOULEVARD BROWN



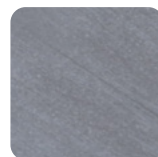
CITYSCAPE
SHADOW GRAY



DOWNTOWN STEEL



HIGH STREET GRAY



HORIZON BLUE



METROPOLIS GREEN

Due to the printing process, the colors depicted here may deviate from the actual colors available. Arconic Architectural Products LLC (AAP) reserves the right to change or withdraw information contained herein without prior notice. Contact AAP for material samples.

Mirror

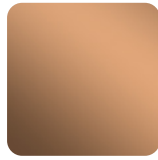
Clear Coat | 10-year warranty



BRITE MIRROR



BRONZE MIRROR



COPPER MIRROR



GOLD MIRROR



STAINLESS STEEL
MIRROR

Brushed Aluminum² Compatible with PPG's DuraPrep® Prep™ 400 grafitto and overspray cleaner.

Clear Coat | 20-year warranty



LONG BRUSHED
ALUMINUM



NATURAL BRUSHED
ALUMINUM



NATURAL BRUSHED
ALUMINUM GRAY

Anodized^{2,3}

AA-M10C22A43 | AAMA 611 Class 1



CHAMPAGNE



LIGHT BRONZE



MEDIUM BRONZE



DARK BRONZE



ELECTROLYTIC
BLACK

AA-M10CC22A42 | AAMA 611 Class 1



LIGHT GOLD

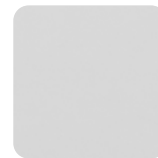


MEDIUM GOLD



DARK GOLD

AA-M10CC22A41 | AAMA 611 Class 1



CLEAR ANODIZED

¹ Please refer to stocking list at reynobond.com for stocking size availability. Minimum quantities may be required for 4MM FR production.

² The appearance of Anodized and Brushed Aluminum finishes may vary with lot of production.

³ Available material stocked in mill finish and anodized to order.

Slight variations in color, gloss and texture can occur between different paint production batches. Paint variations within a specific color, especially for mica and metallic colors, can and do occur that are visible to the human eye, but are within industry tolerances.

Finish Performance Properties

Property	Colorweld® 500	Colorweld® 500XL	Brushed Aluminum	Design Line™	Duragloss® 5000	Duragloss® 3000	Duragloss® 1000
Qualifying Standard	AAMA 2605	AAMA 2605	AAMA 2605	AAMA 2605	AAMA 2604	AAMA 2604	AAMA 2603
Number of Coating Layers	2-Coat	3-Coat	1-Coat	2-Coat or 3-Coat	2-Coat	2-Coat or 3-Coat	2-Coat
Available Gloss Range	Low to Medium	Low to Medium	Low to high	Low to Medium	Low to High	Low to High	Low to High
Relative Coating Durability	*****	*****	*****	****	****	***	**
Relative Color and Gloss Retention (UV Resistance)	*****	*****	*****	****	****	***	**

For more information or to request a color sample, contact your local sales manager or visit reynobond.com



DISCLAIMER

Laws and building and safety codes governing the design and use of AAP's products, and specifically aluminum composite materials, vary widely. It is the responsibility of the owner, the architect, the general contractor, the installer and the fabricator/transformer, consistent with their roles, to determine the appropriate materials for a project in strict conformity to all applicable national, regional and local building codes and regulations.

REYNOBOND® FR AND AS3000B HAVE SUCCESSFULLY PASSED US NFPA 285, E84 AND CANADA S134, S102 TESTS AS A PART OF AN ASSEMBLY. ENSURE THE PRODUCT IS USED IN A SYSTEM THAT COMPLIES WITH ALL APPLICABLE REGULATIONS. REYNOBOND® PE IS COMBUSTIBLE; IT COULD CATCH FIRE AND BURN. ANY LABORATORY TESTING INFORMATION PROVIDED BY AAP LLC APPLIES ONLY TO THE PARTICULAR PRODUCT OR ASSEMBLY TESTED AND DOES NOT NECESSARILY REPRESENT HOW PRODUCTS WILL ACTUALLY PERFORM IN USE. REPORTS AND TEST DATA CORRESPONDING TO A PARTICULAR TESTED PRODUCT SAMPLE OR ASSEMBLY ARE NOT A GUARANTEE THAT THE SAME PRODUCT OR ASSEMBLY WOULD ALWAYS ACHIEVE THE SAME TEST RESULT.

Information contained herein or related hereto is intended only for evaluation by technically skilled persons, with any use thereof to be at their independent discretion and risk. AAP and its affiliates shall have no responsibility or liability for results obtained or damages resulting from such use. AAP grants no license under, and shall have no responsibility or liability for infringement of, any patent or other proprietary right. Nothing in this document should be construed as a warranty or guarantee by AAP, and the only applicable warranties will be those set forth in AAP acknowledgment or in any printed warranty documents issued by AAP. The foregoing may be waived or modified only in writing signed by an AAP officer.

ARCONIC ARCHITECTURAL PRODUCTS LLC

50 Industrial Boulevard
 Eastman, GA 31023-4129
 Tel. 1.800.841.7774
samples.literature@arconic.com
reynobond.com

2024 Arconic Architectural Products LLC
 Form No. 24-0001